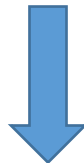


## Microsoft MCSA Certification 70-698 Exam



- Vendor: Microsoft
- Exam Code: 70-698
- Exam Name: Installing and Configuring Windows 10

**Get Complete Version Exam 70-698 Dumps with VCE and PDF Here**



<https://www.passleader.com/70-698.html>

**QUESTION 1**

You have a computer named Computer1 that has the following stored credentials.

- A Windows credential for accessing a shared folder on a workgroup computer
- A Windows credential for accessing Remote Desktop
- A Windows credential for accessing an HTTP URL
- A web credential for accessing an HTTPS URL
- A web credential for accessing an HTTP URL

Which two passwords can be viewed in clear text from Credential Manager on Computer1? (Choose two.)

- A. the web credential for accessing the HTTPS URL
- B. the Windows credential for accessing the shared folder
- C. the Windows credential for accessing the HTTP URL
- D. the Windows credential for accessing Remote Desktop
- E. the web credential for accessing the HTTP URL

**Answer: BD**

**QUESTION 2**

You have a computer named Computer1 that is configured to install updates from Windows Server Update Services (WSUS). Microsoft releases a new Windows update that is not approved in WSUS. You need to install the update on Computer1. What should you do?

- A. From a command prompt, run gpupdate /force /sync.
- B. Click Check online for updates from Microsoft Updates, and then check for updates.
- C. Clear the defer upgrades check box, and then check for updates.
- D. From Windows PowerShell, run the Get-WindowsUpdateLog cmdlet, and then run the Update-Module cmdlet.

**Answer: A**

**QUESTION 3**

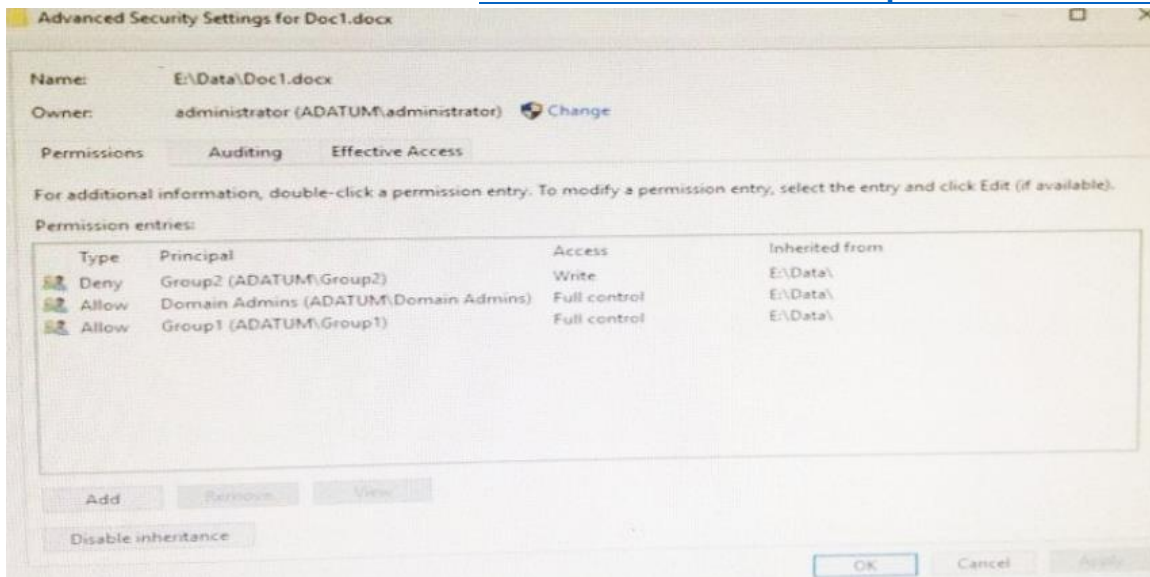
You purchase licenses for several apps from the Windows Store and you list the apps in your Windows Store for Business. You need to tell users how to install the apps. What should you instruct the users to use?

- A. a web browser and a Microsoft Azure Active Directory (Azure AD) account
- B. a web browser and a Microsoft account
- C. the Windows Store app and a Microsoft account
- D. the Windows Store app and a Microsoft Azure Active Directory (Azure AD) account

**Answer: D**

**QUESTION 4**

You have a computer named Computer1. A user named User1 is a member of two groups named Group1 and Group2. You have a file named Doc1.docx that is located in E:\Data. The file permissions for E:\Data\Doc1.docx are configured as shown in the exhibit.



You need to provide User1 with Write access to Doc1.docx. What should you do?

- A. Grant User1 Full control access to folder E:\Data.
- B. Remove User1 from Group2 and instruct the user to sign out, and then sign back in.
- C. Grant User1 Full control access to the E:\Data\Doc1.docx file, disable inheritance for the file, and then convert the inherited permissions to explicit permissions for the file.
- D. Grant User1 Write access to folder E.

**Answer: D**

#### QUESTION 5

You have a laptop that has a high resolution display. The Change the size of text, apps, and other items setting is set to 175%. You install a desktop application name App1. When you start App1, the visual elements are misaligned, and the application interface does not appear as expected. You need to ensure that App1 is displayed properly without affecting how other applications are displayed. What should you do?

- A. Create an AppX package for App1.
- B. Configure an AppLocker rule for App1.
- C. Modify the Compatibility settings of App1.
- D. Run App1 as an administrator.

**Answer: A**

#### QUESTION 6

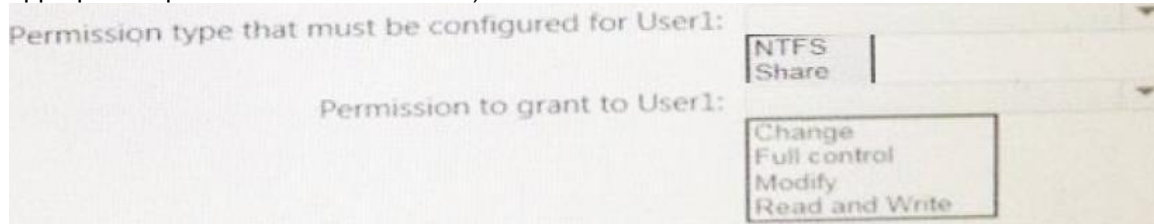
Hotspot Question

You have a computer named Computer1 that has a shared folder named Share1. Share1 has the permissions configured as shown in the following table.

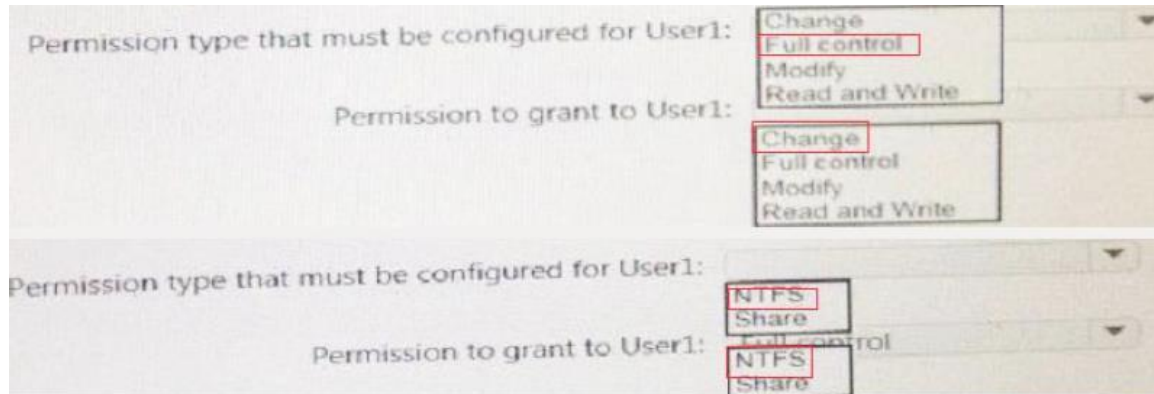
Service principal name (SPN)	NTFS permission	Share permission
User1	Read	Change
User2	Modify	Full control
User3	Modify	None

You need to ensure that User1 can change files in Share1. User1 must be prevented from deleting files created by other users. How should you configure the permissions? (To answer, select the

appropriate options in the answer area.)



**Answer:**



#### QUESTION 7

You have a laptop named Computer1 that runs Windows 10. Computer1 connects to a wireless network named WiFi1 and a wireless network named WiFi2. WiFi1 has poor signal and the connection drops frequently. WiFi2 is available only during certain times of the day. WiFi2 has a stronger signal that is more reliable than WiFi1. You need to configure Computer1 to use WiFi2 whenever possible. WiFi1 should be used when WiFi2 is unavailable. Which three settings should you configure? (Each correct answer presents part of the solution. Choose three.)

- A. From the properties of WiFi2, select Connect even if the network is not broadcasting its name (SSID).
- B. From the properties of WiFi1, select Connect automatically when this network is in range.
- C. From the properties of WiFi1, select Enable WLAN connection settings.
- D. From the properties of WiFi2, select Connect automatically when this network is in range.
- E. From the properties of WiFi1, select Look for other wireless networks while connected to this network.
- F. From the properties of WiFi2, select Look for other wireless networks while connected to this network.

**Answer:** CDF

#### QUESTION 8

You have a computer named Computer1 that runs Windows 10. On Computer1, C:\Folder1 has the permissions configured as shown in the following table. You share C:\Folder1 as Folder1 and you grant access to the Everyone group. Folder1 has the following share settings.

```
ShareState           : Online
AvailabilityType     : NonClustered
ShareType            : FileSystemDirectory
FolderEnumerationMode : AccessBased
CachingMode          : Manual
SmbInstance          : Default
CATimeout             : 0
ConcurrentUserLimit  : 0
EncryptData          : False
Name                 : Folder1
Path                 : C:\Folder1
Scoped               : False
ScopeName            : *
SecurityDescriptor    : O:BAG:DUD:(A;;;0x1200a9;;;WD)
```

What level of access does User1 have to Folder1?

- A. User1 cannot see the Folder1 share on the network and cannot connect to Folder1.
- B. User1 can see the Folder1 share on the network and can connect to Folder1.
- C. User1 cannot see the Folder1 share on the network but can connect to Folder1.
- D. User1 can see the Folder1 share on the network but cannot connect to Folder1.

**Answer: A**

#### QUESTION 9

Your company uses a Window Store for Business that contains an app named App1. You have three computers that are prevented from accessing the Internet. You need to distribute App1 to the three computers. What are two possible ways to achieve the goal? (Each correct answer presents a complete solution. Choose two.)

- A. a provisioning package created by using Windows Imaging and Configuration Designer
- B. A deployment from Microsoft Intune
- C. A deployment from Windows Deployment Services (WDS)
- D. an AppX package deployed by using Deployment Imaging Servicing and Management (DISM)
- E. an answer file created by using Windows System Image Manager (Windows SIM)

**Answer: DE**

#### QUESTION 10

**Note: This question is part of a series of questions that present the same scenario. Each question in the series contains a unique solution. Determine whether the solution meets the stated goals.**

Your network contains a single Active Directory domain named contoso.com. The domain contains two computers named Computer1 and Computer2. A user named User1 is a member of the local Administrators group on Computer1 and Computer2. User1 fails to remotely manage the devices on Computer2 by using Device Manager on Computer1. User1 can connect to Computer2 remotely by using Computer Management. You need to ensure that User1 can disable a device on Computer2 remotely.

Solution: You modify the Windows Firewall settings on Computer2.

[70-698 Exam Dumps](#) [70-698 Exam Questions](#) [70-698 PDF Dumps](#) [70-698 VCE Dumps](#)

[Back to the Source of this PDF & Get More Free Braindumps -- www.microsoftbraindumps.com](#)

Does this meet the goal?

- A. Yes
- B. No

**Answer: A**

#### **QUESTION 11**

**Note: This question is part of a series of questions that present the same scenario. Each question in the series contains a unique solution. Determine whether the solution meets the stated goals.**

Your network contains a single Active Directory domain named contoso.com. The domain contains two computers named Computer1 and Computer2. A user named User1 is a member of the local Administrators group on Computer1 and Computer2. User1 fails to remotely manage the devices on Computer2 by using Device Manager on Computer1. User1 can connect to Computer2 remotely by using Computer Management. You need to ensure that User1 can disable a device on Computer2 remotely.

Solution: You enable Remote Desktop on Computer2, and you instruct User1 to use Remote Desktop.

Does this meet the goal?

- A. Yes
- B. No

**Answer: B**

#### **QUESTION 12**

**Note: This question is part of a series of questions that present the same scenario. Each question in the series contains a unique solution. Determine whether the solution meets the stated goals.**

Your network contains a single Active Directory domain named contoso.com. The domain contains two computers named Computer1 and Computer2. A user named User1 is a member of the local Administrators group on Computer1 and Computer2. User1 fails to remotely manage the devices on Computer2 by using Device Manager on Computer1. User1 can connect to Computer2 remotely by using Computer Management. You need to ensure that User1 can disable a device on Computer2 remotely.

Solution: You start the Plug and play and Remote Registry services on Computer2.

Does this meet the goal?

- A. Yes
- B. No

**Answer: B**

#### **QUESTION 13**

**Note: This question is part of a series of questions that present the same scenario. Each question in the series contains a unique solution. Determine whether the solution meets the stated goals.**

Your network contains a single Active Directory domain named contoso.com. The domain contains two computers named Computer1 and Computer2. A user named User1 is a member of the local Administrators group on Computer1 and Computer2. User1 fails to remotely manage the devices on Computer2 by using Device Manager on Computer1. User1 can connect to Computer2 remotely by using Computer Management. You need to ensure that User1 can disable a device on Computer2 remotely.

Solution: You enable the Allow remote access to the Plug and Play interface Group Policy setting on Computer2.

Does this meet the goal?

- A. Yes
- B. No

**Answer: A**

#### **QUESTION 14**

**Note: This question is part of a series of questions that present the same scenario. Each question in the series contains a unique solution. Determine whether the solution meets the stated goals.**

While performing maintenance on a computer, you open Indexing Options, and then you click Pause. You complete the computer maintenance. You need to resume indexing.

Solution: From the Start menu, you click Power and then you click Restart.

Does this meet the goal?

- A. Yes
- B. No

**Answer: A**

#### **QUESTION 15**

**Note: This question is part of a series of questions that present the same scenario. Each question in the series contains a unique solution. Determine whether the solution meets the stated goals.**

While performing maintenance on a computer, you open Indexing Options, and then you click Pause. You complete the computer maintenance. You need to resume indexing.

Solution: From the Services console, you restart the Storage Service service.

Does this meet the goal?

- A. Yes
- B. No

**Answer: B**

#### **QUESTION 16**

**Note: This question is part of a series of questions that present the same scenario. Each question in the series contains a unique solution. Determine whether the solution meets the stated goals.**

While performing maintenance on a computer, you open Indexing Options, and then you click Pause. You complete the computer maintenance. You need to resume indexing.

Solution: From the Services console, you restart the Windows Search service.

Does this meet the goal?

- A. Yes
- B. No

**Answer: B**

#### **QUESTION 17**

**Note: This question is part of a series of questions that present the same scenario. Each**



**question in the series contains a unique solution. Determine whether the solution meets the stated goals.**

While performing maintenance on a computer, you open Indexing Options, and then you click Pause. You complete the computer maintenance. You need to resume indexing.

Solution: You sign out of Windows, and then you sign back in.

Does this meet the goal?

- A. Yes
- B. No

**Answer: A**

#### **QUESTION 18**

**Note: This question is part of a series of questions that present the same scenario. Each question in the series contains a unique solution. Determine whether the solution meets the stated goals.**

You have a computer named Computer1 that runs Windows 10. File History is turned on. The user of Computer1 reports that previous versions of D:\Folder\File1.doc are unavailable from the Previous Versions tab. You need to ensure that the previous versions of the file are created.

Solution: Modify the Backup settings in the Settings app.

Does this meet the goal?

- A. Yes
- B. No

**Answer: A**

#### **QUESTION 19**

**Note: This question is part of a series of questions that present the same scenario. Each question in the series contains a unique solution. Determine whether the solution meets the stated goals.**

You have a computer named Computer1 that runs Windows 10. File History is turned on. The user of Computer1 reports that previous versions of D:\Folder\File1.doc are unavailable from the Previous Versions tab. You need to ensure that the previous versions of the file are created.

Solution: Turn on System Protection for drive D.

Does this meet the goal?

- A. Yes
- B. No

**Answer: B**

#### **QUESTION 20**

**Note: This question is part of a series of questions that present the same scenario. Each question in the series contains a unique solution. Determine whether the solution meets the stated goals.**

You have a computer named Computer1 that runs Windows 10. File History is turned on. The user of Computer1 reports that previous versions of D:\Folder\File1.doc are unavailable from the Previous Versions tab. You need to ensure that the previous versions of the file are created.

Solution: Create a backup of drive D by using Backup and Restore (Windows 7).

Does this meet the goal?

- A. Yes



B. No

**Answer: A**

**QUESTION 21**

**Note:** This question is part of a series of questions that present the same scenario. Each question in the series contains a unique solution. Determine whether the solution meets the stated goals.

You have a computer named Computer1 that runs Windows 10. File History is turned on. The user of Computer1 reports that previous versions of D:\Folder\File1.doc are unavailable from the Previous Versions tab. You need to ensure that the previous versions of the file are created.

Solution: Add D:\Folder\ to the Documents library.

Does this meet the goal?

A. Yes

B. No

**Answer: A**

**QUESTION 22**

**Note:** This question is part of a series of questions that present the same scenario. Each question in the series contains a unique solution. Determine whether the solution meets the stated goals.

A user named User1 is a member of the local Administrators group on Computer1 and Computer2. User1 fails to access the Event Viewer logs on Computer 2 from Computer 1. User1 can connect to Computer2 remotely by using Computer Management. You need to ensure that User1 can use Event Viewer on Computer1 to remotely view the Event Viewer logs on Computer 2.

Solution: You run Enable-PSRemoting on Computer 1.

Does this meet the goal?

A. Yes

B. No

**Answer: B**

**QUESTION 23**

**Note:** This question is part of a series of questions that present the same scenario. Each question in the series contains a unique solution. Determine whether the solution meets the stated goals.

A user named User1 is a member of the local Administrators group on Computer1 and Computer2. User1 fails to access the Event Viewer logs on Computer 2 from Computer 1. User1 can connect to Computer2 remotely by using Computer Management. You need to ensure that User1 can use Event Viewer on Computer1 to remotely view the Event Viewer logs on Computer 2.

Solution: You run winrm quick config on Computer2.

Does this meet the goal?

A. Yes

B. No

**Answer: B**

**QUESTION 24**

**Note:** This question is part of a series of questions that use the same scenario. For your

convenience, the scenario is repeated in each question. Each question presents a different goal and answer choices, but the text of the scenario is exactly the same in each question in this series.

**Start of repeated scenario.**

Your network contains a single Active Directory domain named adatum.com. The network contains five servers configured as shown in the following table.

Server name	Domain/workgroup	Role
DC1	Adatum.com	Domain controller
DC2	Adatum.com	Domain controller
Server1	Adatum.com	Member server
Server2	Adatum.com	Member server
Test_Server	Workgroup	File server

All of the servers run Windows Server 2012 R2. Test\_Server has a shared folder named ShareA. Only local users have permissions to ShareA. The network contains a mainframe computer that is administered by using the Telnet protocol. The domain contains four client computers configured as shown in the following table.

Computer name	Primary user
Computer1	User1
Computer2	User2
Computer3	User3
Computer4	User4

All of the client computers run the 64-bit version of Windows. User3 frequently accesses ShareA. Remote Desktop is enabled on Computer4. Your company identifies the following requirements:

- Ensure that you can test unsigned device drivers on Computer1.
- Enable Credential Guard on Computer2.
- Run commands and cmdlets remotely on computer2.
- Configure User Account control (UAC) on Computer3 to prompt administrators for credentials when elevated privileges are required.
- Ensure that User1 can view and interact with a desktop session of User3.
- Ensure that User2 can use Telnet to manage the mainframe.
- Ensure that User4 can use Remote Desktop to access Computer4 remotely.

**End of repeated scenario.**

You need to configure Computer3 to meet the UAC requirement. What should you use?

- A. User Account Control Settings
- B. Credential Manager
- C. Security Options in the Computer Configuration of the Local Computer Policy
- D. Security Settings in the User Computer of the Local Computer Policy

**Answer: C**

**QUESTION 25**

**Note:** This question is part of a series of questions that use the same scenario. For your convenience, the scenario is repeated in each question. Each question presents a different goal and answer choices, but the text of the scenario is exactly the same in each question in this series.

**Start of repeated scenario.**

Your network contains a single Active Directory domain named adatum.com. The network contains five servers configured as shown in the following table.

Server name	Domain/workgroup	Role
DC1	Adatum.com	Domain controller
DC2	Adatum.com	Domain controller
Server1	Adatum.com	Member server
Server2	Adatum.com	Member server
Test_Server	Workgroup	File server

All of the servers run Windows Server 2012 R2. Test\_Server has a shared folder named ShareA. Only local users have permissions to ShareA. The network contains a mainframe computer that is administered by using the Telnet protocol. The domain contains four client computers configured as shown in the following table.

Computer name	Primary user
Computer1	User1
Computer2	User2
Computer3	User3
Computer4	User4

All of the client computers run the 64-bit version of Windows. User3 frequently accesses ShareA. Remote Desktop is enabled on Computer4. Your company identifies the following requirements:

- Ensure that you can test unsigned device drivers on Computer1.
- Enable Credential Guard on Computer2.
- Run commands and cmdlets remotely on computer2.
- Configure User Account control (UAC) on Computer3 to prompt administrators for credentials when elevated privileges are required.
- Ensure that User1 can view and interact with a desktop session of User3.
- Ensure that User2 can use Telnet to manage the mainframe.
- Ensure that User4 can use Remote Desktop to access Computer4 remotely.

**End of repeated scenario.**

On Test\_Server, you reset the password for User3. You need to ensure that User3 can access ShareA. Which tool should you instruct User3 to use on Computer3?

- A. the Get-Credential cmdlet
- B. Credential Manager
- C. Authorization Manager
- D. Active Directory Users and Computers

**Answer: B**

**QUESTION 26**

**Note:** This question is part of a series of questions that use the same scenario. For your convenience, the scenario is repeated in each question. Each question presents a different goal and answer choices, but the text of the scenario is exactly the same in each question in this series.

**Start of repeated scenario.**

Your network contains a single Active Directory domain named adatum.com. The network contains five servers configured as shown in the following table.

Server name	Domain/workgroup	Role
DC1	Adatum.com	Domain controller
DC2	Adatum.com	Domain controller
Server1	Adatum.com	Member server
Server2	Adatum.com	Member server
Test_Server	Workgroup	File server

All of the servers run Windows Server 2012 R2. Test\_Server has a shared folder named ShareA. Only local users have permissions to ShareA. The network contains a mainframe computer that is administered by using the Telnet protocol. The domain contains four client computers configured as shown in the following table.

Computer name	Primary user
Computer1	User1
Computer2	User2
Computer3	User3
Computer4	User4

All of the client computers run the 64-bit version of Windows. User3 frequently accesses ShareA. Remote Desktop is enabled on Computer4. Your company identifies the following requirements:

- Ensure that you can test unsigned device drivers on Computer1.
- Enable Credential Guard on Computer2.
- Run commands and cmdlets remotely on computer2.
- Configure User Account control (UAC) on Computer3 to prompt administrators for credentials when elevated privileges are required.
- Ensure that User1 can view and interact with a desktop session of User3.
- Ensure that User2 can use Telnet to manage the mainframe.
- Ensure that User4 can use Remote Desktop to access Computer4 remotely.

**End of repeated scenario.**

You need to meet the Credential Guard requirement of Computer2. Which two Windows features should you install? Each correct answer presents part of the solution.

- A. Windows Process Activation Service (WAS)
- B. Embedded Boot Experience
- C. Isolated User Mode
- D. Windows Identity Foundation 3.5
- E. Hyper-V Hypervisor

**Answer: CE**

**QUESTION 27**

**Note:** This question is part of a series of questions that use the same scenario. For your convenience, the scenario is repeated in each question. Each question presents a different goal and answer choices, but the text of the scenario is exactly the same in each question in this series.

**Start of repeated scenario.**

Your network contains a single Active Directory domain named adatum.com. The network contains five servers configured as shown in the following table.

Server name	Domain/workgroup	Role
DC1	Adatum.com	Domain controller
DC2	Adatum.com	Domain controller
Server1	Adatum.com	Member server
Server2	Adatum.com	Member server
Test_Server	Workgroup	File server

All of the servers run Windows Server 2012 R2. Test\_Server has a shared folder named ShareA. Only local users have permissions to ShareA. The network contains a mainframe computer that is administered by using the Telnet protocol. The domain contains four client computers configured as shown in the following table.

Computer name	Primary user
Computer1	User1
Computer2	User2
Computer3	User3
Computer4	User4

All of the client computers run the 64-bit version of Windows. User3 frequently accesses ShareA. Remote Desktop is enabled on Computer4. Your company identifies the following requirements:

- Ensure that you can test unsigned device drivers on Computer1.
- Enable Credential Guard on Computer2.
- Run commands and cmdlets remotely on computer2.
- Configure User Account control (UAC) on Computer3 to prompt administrators for credentials when elevated privileges are required.
- Ensure that User1 can view and interact with a desktop session of User3.
- Ensure that User2 can use Telnet to manage the mainframe.
- Ensure that User4 can use Remote Desktop to access Computer4 remotely.

**End of repeated scenario.**

You need to meet the requirement of User2. What should you do?

- A. Run tlntadmn.exe
- B. install a Windows feature
- C. Modify the membership of the Telnet Clients group
- D. Configure Windows Firewall

**Answer: C**

**QUESTION 28**

**Note: This question is part of a series of questions that use the same set of answer choices. Each answer choice may be used once, more than once, or not at all.**

Your network contains a single Active Directory domain. The domain contains a VPN server that supports all of the VPN protocols. A user named User1 works from home and has a desktop computer that runs Windows 10 Pro. User1 has an application named App1 that requires access to a server on the corporate network. User1 creates a VPN connection on the computer. You need to ensure that when User1 opens App1, App1 can access the required data. What should you do?

- A. Click Turn on password protected sharing.
- B. Disable Network Discovery.
- C. Modify the Profile settings of an incoming firewall rule.
- D. Run the Add-VpnConnection Trigger Application cmdlet.
- E. Run the New-NetFirewallRule cmdlet and specify the -Direction Outbound parameter.



- F. Run the New-VpnConnection cmdlet.
- G. Run the Set-NetConnection Profile cmdlet.
- H. Run the Set-VPNConnection cmdlet.

**Answer: D**

#### QUESTION 29

**Note: This question is part of a series of questions that use the same set of answer choices. Each answer choice may be used once, more than once, or not at all.**

You have 10 computers that run Windows 10 Pro. The computers are in a workgroup. A computer named PC\_User1 has shared folder named Share1. Users are not prompted for credentials when they access Share1. You modify the permissions on Share1 so that the share is shared only to a user named User1. You need to ensure that when users from other computers in the workgroup access Share1, they must authenticate by using the credentials of User1. What should you do?

- A. Click Turn on password protected sharing.
- B. Disable Network Discovery.
- C. Modify the Profile settings of an incoming firewall rule.
- D. Run the Add-VpnConnectionTriggerApplication cmdlet.
- E. Run the New-NetFirewallRule cmdlet and specify the -Direction Outbound parameter.
- F. Run the New-VpnConnection cmdlet.
- G. Run the Set-NetConnectionProfile cmdlet.
- H. Run the Set-VPNConnection cmdlet.

**Answer: A**

#### QUESTION 30

**Note: This question is part of a series of questions that use the same set of answer choices. Each answer choice may be used once, more than once, or not at all.**

Your network contains a single Active Directory domain. The domain contains a VPN server that supports all of the VPN protocols. From a computer that runs Windows 10 Pro, a user named User1 creates an SSTP VPN connection to a network named VPN1. User1 successfully connects to the VPN server. When User1 roams between different Wi-Fi access points, the user loses the connection to the corporate network and must manually re-establish the VPN connection. You need to ensure that VPN1 automatically maintains the connection while the user roams between Wi-Fi access points. What should you do?

- A. Click Turn on password protected sharing.
- B. Disable Network Discovery.
- C. Modify the Profile settings of an incoming firewall rule.
- D. Run the Add-VpnConnectionTriggerApplication cmdlet.
- E. Run the New-NetFirewallRule cmdlet and specify the -Direction Outbound parameter.
- F. Run the New-VpnConnection cmdlet.
- G. Run the Set-NetConnectionProfile cmdlet.
- H. Run the Set-VPNConnection cmdlet.

**Answer: D**

#### QUESTION 31

**Note: This question is part of a series of questions that use the same set of answer choices. Each answer choice may be used once, more than once, or not at all.**

You have a computer named Computer1 that has storage configured as shown in the following

table.

Disk name	Size	Storage pool name
Disk1	200 GB	Pool1
Disk2	100 GB	Pool1
Disk3	500 GB	Pool1
Disk4	500 GB	Pool2
Disk5	500 GB	Pool2
Disk6	800 GB	None
Disk7	100 GB	Pool3
Disk8	100 GB	Pool3

Pool1 contains a storage space named Space1 that is 300 GB. Pool3 contains a storage space named Space2 that is 100 GB. Pool2 is empty. You need to add Disk6 to Pool1. What should you use?

- A. Add-PhysicalDisk
- B. Diskpart
- C. New-VirtualDisk
- D. Remove-PhysicalDisk
- E. Resize-VirtualDisk
- F. Set-StoragePool
- G. Subst
- H. Update-Disk

**Answer: A**

### QUESTION 32

**Note:** This question is part of a series of a questions that use the same set of answer choices. Each answer choice may be used once, more than once, or not at all.

You have a computer named Computer1 that has storage configured as shown in the following table.

Disk name	Size	Storage pool name
Disk1	200 GB	Pool1
Disk2	100 GB	Pool1
Disk3	500 GB	Pool1
Disk4	500 GB	Pool2
Disk5	500 GB	Pool2
Disk6	800 GB	None
Disk7	100 GB	Pool3
Disk8	100 GB	Pool3

Pool1 contains a storage space named Space1 that is 300 GB. Pool3 contains a storage space named Space2 that is 100 GB. Pool2 is empty. You need to add a storage space to Pool2. What should you use?



- A. Add-PhysicalDisk
- B. Diskpart
- C. New-VirtualDisk
- D. Remove-PhysicalDisk
- E. Resize-VirtualDisk
- F. Set-StoragePool
- G. Subst
- H. Update-Disk

**Answer: A**

**QUESTION 33**

**Note: This question is part of a series of questions that use the same set of answer choices. Each answer choice may be used once, more than once, or not at all.**

You have a computer named Computer1 that has storage configured as shown in the following table.

Disk name	Size	Storage pool name
Disk1	200 GB	Pool1
Disk2	100 GB	Pool1
Disk3	500 GB	Pool1
Disk4	500 GB	Pool2
Disk5	500 GB	Pool2
Disk6	800 GB	None
Disk7	100 GB	Pool3
Disk8	100 GB	Pool3

Pool1 contains a storage space named Space1 that is 300 GB. Pool3 contains a storage space named Space2 that is 100 GB. Pool2 is empty. You need to add Disk7 to Pool1. What should you use first?

- A. Add-PhysicalDisk
- B. Diskpart
- C. New-VirtualDisk
- D. Remove-PhysicalDisk
- E. Resize-VirtualDisk
- F. Set-StoragePool
- G. Subst
- H. Update-Disk

**Answer: D**

**QUESTION 34**

**Note: This question is part of a series of questions that use the same set of answer choices. Each answer choice may be used once, more than once, or not at all.**

You have a computer named Computer1. Computer1 has a virtual hard disk (VHD) named Disk1.vhdx. Disk1.vhdx has an NTFS partition, which is visible in File Explorer as drive E. You need to provision Windows 10 on Disk1.vhdx. What should you run?

- A. Add-Windows Image
- B. bcdboot.exe
- C. bcdedit.exe
- D. bootcfg.exe
- E. bootim.exe
- F. bootsect.exe
- G. diskpart.exe
- H. Expand-Windows Image

**Answer: G**

**QUESTION 35**

**Note: This question is part of a series of questions that use the same set of answer choices. Each answer choice may be used once, more than once, or not at all.**

You have a computer that has a dual-boot configuration. Windows 10 Pro is installed on the local disk. Windows 10 Enterprise is installed in a VHDX file named Disk1vhdx. You start the computer to Windows 10 Pro, and then you download a driver package. You need to ensure that the next time the Windows 10 Enterprise installation starts, the driver is installed already. What should you run first?

- A. Add-Windows Image
- B. bcdboot.exe
- C. bcdedit.exe
- D. bootcfg.exe
- E. bootim.exe
- F. bootsect.exe
- G. diskpart.exe
- H. Expand-Windows Image

**Answer: G**

**QUESTION 36**

**Note: This question is part of a series of questions that use the same set of answer choices. Each answer choice may be used once, more than once, or not at all.**

You have a computer named Computer1 that has a dual-boot configuration. Computer1 has Windows 8.1 and Windows 10 installed. You need to configure Computer1 to use only 4 GB of RAM when the computer starts in Windows 10. What should you run?

- A. Add-Windows Image
- B. bcdboot.exe
- C. bcdedit.exe
- D. bootcfg.exe
- E. bootim.exe
- F. bootsect.exe
- G. diskpart.exe
- H. Expand-Windows Image

**Answer: C**

**QUESTION 37**

**Note:** This question is part of a series of questions that use the same scenario. For your convenience, the scenario is repeated in each question. Each question presents a different goal and answer choices, but the text of the scenario exactly the same in each question in this series.

**Start of repeated scenario.**

Your network contains a single Active Directory domain named contoso.com. All computers are members of the domain and run the 64-bit version of Windows 10 Enterprise. On a test computer named Computer\_Test1, you pin several company-specific applications in a group named Contoso Apps, and then you export the start menu layout to a file named contoso.xml. You install Client Hyper-V on a computer named Computer6. You identify the following requirements.

- Install the Hyper V feature on a computer named Computer1.
- Use virtual smart card authentication on a computer named Computer2.
- Enable Secure Boot on a computer named Computer3.
- Connect a computer named Computer4 to a projector by using Miracast.
- Ensure that a user named User 1 can use keyboard shortcuts by pressing one key at a time.
- Ensure that you can share the clipboard between Computer6 and the virtual machines running on Computer6.
- Add the Contoso Apps group to the Start menu of a computer named Computer7.

**End of repeated scenario.**

You install all of the Contoso apps on Computer7. You need to meet the requirements of Computer7. What should you do?

- A. Run the Import-StartLayout cmdlet
- B. Copy Contoso.xml to the C:\Users\Default\Start menu folder
- C. Configure the Start Menu and Taskbar settings in a Group Policy
- D. Copy Contoso.xml to the C:\ProgramData\Microsoft\Windows\Start Menu folder

**Answer: A**

**QUESTION 38**

**Note:** This question is part of a series of questions that use the same scenario. For your convenience, the scenario is repeated in each question. Each question presents a different goal and answer choices, but the text of the scenario exactly the same in each question in this series.

**Start of repeated scenario.**

Your network contains a single Active Directory domain named contoso.com. All computers are members of the domain and run the 64-bit version of Windows 10 Enterprise. On a test computer named Computer\_Test1, you pin several company-specific applications in a group named Contoso Apps, and then you export the start menu layout to a file named contoso.xml. You install Client Hyper-V on a computer named Computer6. You identify the following requirements.

- Install the Hyper V feature on a computer named Computer1.
- Use virtual smart card authentication on a computer named Computer2.
- Enable Secure Boot on a computer named Computer3.
- Connect a computer named Computer4 to a projector by using Miracast.
- Ensure that a user named User 1 can use keyboard shortcuts by pressing one key at a time.
- Ensure that you can share the clipboard between Computer6 and the virtual machines running on Computer6.
- Add the Contoso Apps group to the Start menu of a computer named Computer7.

**End of repeated scenario.**

You need to meet the requirement of Computer6. What should you configure?

- A. NUMA spanning
- B. enhanced session mode
- C. Hyper-V Guest Service Interface
- D. RemoteFX

**Answer: B**

**QUESTION 39**

**Note:** This question is part of a series of questions that use the same scenario. For your convenience, the scenario is repeated in each question. Each question presents a different goal and answer choices, but the text of the scenario exactly the same in each question in this series.

**Start of repeated scenario.**

Your network contains a single Active Directory domain named contoso.com. All computers are members of the domain and run the 64-bit version of Windows 10 Enterprise. On a test computer named Computer\_Test1, you pin several company-specific applications in a group named Contoso Apps, and then you export the start menu layout to a file named contoso.xml. You install Client Hyper-V on a computer named Computer6. You identify the following requirements.

- Install the Hyper V feature on a computer named Computer1.
- Use virtual smart card authentication on a computer named Computer2.
- Enable Secure Boot on a computer named Computer3.
- Connect a computer named Computer4 to a projector by using Miracast.
- Ensure that a user named User 1 can use keyboard shortcuts by pressing one key at a time.
- Ensure that you can share the clipboard between Computer6 and the virtual machines running on Computer6.
- Add the Contoso Apps group to the Start menu of a computer named Computer7.

**End of repeated scenario.**

You need to meet the requirement of User1. Which Ease of Access setting should you configure?

- A. Toggle Keys
- B. sticky Keys
- C. Filter Keys
- D. Mouse Keys

**Answer: B**

**QUESTION 40**

Hotspot Question

You have a computer named Computer1 that runs Windows 10. You run the Get-VMHost | fl\* cmdlet on Computer1, and you receive the following output.

```

ComputerName           : COMPUTER1
LogicalProcessorCount   : 4
ResourceMeteringSaveInterval : 01:00:00
HostNumaStatus          : {COMPUTER1}
NumaStatus              : {}
IovSupport              : False
IovSupportReasons       : {SR-IOV is not supported on this version of Windows.}
InternalNetworkAdapters : {External network}
ExternalNetworkAdapters : {External network_External}
SupportedVmVersions      : {5.0, 6.2, 7.0}
SecureBootTemplates     : {MicrosoftWindows, MicrosoftUEFICertificateAuthority}
EnableEnhancedSessionMode : False
FibreChannelWwpn        : C003FF0000FFFF00
FibreChannelWwpnMaximum : C003FFA43B08FFFF
FibreChannelWwpnMinimum : C003FFA43B080000
MacAddressMaximum        : 00155DCD23FF
MacAddressMinimum        : 00155DCD2300
NumaSpanningEnabled      : True
VirtualHardDiskPath       : C:\VMs
VirtualMachinePath        : C:\VMs
FullyQualifiedDomainName  : WORKGROUP
MemoryCapacity            : 8499589120
Name                      : COMPUTER1
MaximumStorageMigrations : 2
MaximumVirtualMachineMigrations : 2
UseAnyNetworkForMigration : False
VirtualMachineMigrationAuthenticationType : CredSSP
VirtualMachineMigrationEnabled : False
VirtualMachineMigrationPerformanceOption : TCP/IP
CimSession                : CimSession: .
IsDeleted                  : False

```

Use the drop-down menus to select the answer choice that completes each statement based on the information presented in the output.

You [answer choice] storage migrations on Computer1.

cannot perform  
can perform a maximum of two concurrent  
can perform a maximum of four concurrent  
can perform a maximum of eight concurrent

You [answer choice] virtual machine migrations from Computer1 to another Hyper-V host.

cannot perform  
can perform a maximum of two concurrent  
can perform a maximum of four concurrent  
can perform a maximum of eight concurrent

**Answer:**

You [answer choice] storage migrations on Computer1.

☐ cannot perform  
☒ can perform a maximum of two concurrent  
☐ can perform a maximum of four concurrent  
☐ can perform a maximum of eight concurrent

You [answer choice] virtual machine migrations from Computer1 to another Hyper-V host.

☐ cannot perform  
☒ can perform a maximum of two concurrent  
☐ can perform a maximum of four concurrent  
☐ can perform a maximum of eight concurrent

#### QUESTION 41

Hotspot Question

Your network contains a single Active Directory domain named contoso.com. In contoso.com, you create an organizational unit (OU) named OU1. You need to use a provisioning package to perform the following:

- Configure the computer names as ";Statio";, followed by a random three-digit number.
- Join the computers to contoso.com, and then create an account for the computers in OU1.

How should you configure the provisioning package? To answer, select the appropriate options in the answer area.

Value of the AccountOU property:

☐ Contoso.com/OU1  
☒ Ldap://contoso.com/OU1  
☐ OU=OU1, AD=contoso.com  
☐ OU=OU1, DC=contoso, DC=com

Value of the ComputerName property:

☐ Station#Num 3  
☒ Station\$NNN\$  
☐ Station%RAND:3%  
☐ Station [\D:3]

**Answer:**



Value of the AccountOU property:

▼

Contoso.com/OU1  
 Ldap://contoso.com/OU1  
 OU=OU1, AD=contoso.com  
OU=OU1, DC=contoso, DC=com

Value of the ComputerName property:

▼

Station#Num 3  
 Station\$NNN\$  
Station%RAND:3%  
 Station [D:3]

**QUESTION 42**

You have a computer named Computer1. You obtain a new driver for a device installed on Computer1. The driver package is stored in C:\Drivers and includes the following files.

-Driver.inf -Driver.dll -Driver.sys -Driver.cat

You need to install the driver on Computer1 by using File Explorer. Which file should you use to initiate the installation?

- A. Driver.sys
- B. Driver.dll
- C. Driver.cat
- D. Driver.inf

**Answer: B**

**QUESTION 43**

You have four computers configured as shown in the following table.

Computer name	Trusted Platform Module (TPM) version	Wi-Fi Direct support	Second Level Address Translation (SLAT)-capable processor support	Camera type
Computer1	None	No	Yes	Webcam and illuminated infrared camera
Computer2	1.2	Yes	Yes	illuminated infrared camera
Computer3	2.0	No	Yes	Webcam
Computer4	2.0	Yes	No	Webcam

You need to deploy Windows 10 Enterprise. The deployment must support Miracast, BitLocker Drive Encryption (BitLocker), and Windows Hello with facial recognition. On which computer should you install Windows 10?

- A. Computer1



- B. Computer2
- C. Computer3
- D. Computer4

**Answer: B**

**QUESTION 44**

Your network contains a single Active Directory domain that has a Key Management Service (KMS) host. You deploy Windows 10 to several laptops. You need to ensure that Windows 10 is activated on the laptops immediately. Which command should you run?

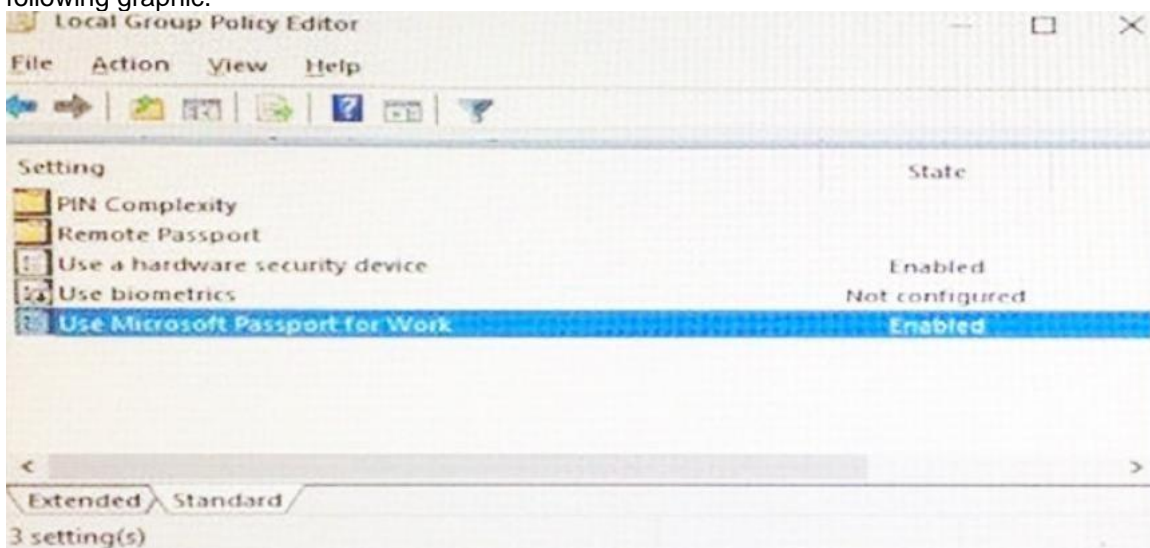
- A. ospp.vbs/act
- B. slmgr.vbs/dli
- C. slmgr.vbs/ato
- D. ospp.vbs/dstatus

**Answer: C**

**QUESTION 45**

Hotspot Question

You configure a Group Policy on a computer that runs Windows 10 Enterprise as shown in the following graphic.



Use the drop-down menus to select the answer choice that completes each statement based on the information presented in the graphic.

To sign in to the computer, the user [answer choice].

must always enter a PIN  
can use a PIN or a hardware security device  
must always use a hardware security device

For this configuration, a [answer choice] is required.

USB key protector  
Trusted Platform Module (TPM) chip  
Second Level Address Translation (SLAT) –capable processor

**Answer:**

To sign in to the computer, the user [answer choice].

must always enter a PIN  
can use a PIN or a hardware security device  
must always use a hardware security device

For this configuration, a [answer choice] is required.

USB key protector  
Trusted Platform Module (TPM) chip  
Second Level Address Translation (SLAT) –capable processor

**QUESTION 46**

You have a computer that runs the 32-bit version of Windows 7 Professional. You need to perform an in-place upgrade to Windows 10. Which two editions of Windows 10 can you upgrade the computer? (Each correct answer presents a complete solution. Choose two.)

- A. the 32-bit version of Windows 10 Pro
- B. the 64-bit version of Windows 10 Pro
- C. the 32-bit version of Windows 10 Enterprise
- D. the 64-bit version of Windows 10 Enterprise
- E. the 32-bit version of Windows 10 Home

**Answer: AC**

**QUESTION 47**

You have five computers that run Windows 8. You need to perform an upgrade installation of Windows 10 on the computers. What are two possible ways to achieve the goal? (Each correct answer presents a complete solution. Choose two.)

- A. Apply an image of Windows 10 by running imagex.exe.
- B. Start the computers from Windows PE, and then run setup.exe from a network share that contains the Windows 10 installation source files.
- C. While signed in to Windows 8, run setup.exe from a network share that contains the Windows 10 installation source files.
- D. Start the computers from a bootable USB drive that contains the Windows 10 source files.

E. Apply updates by using Windows Update.

**Answer: DE**

**QUESTION 48**

You have 10 computers that run Windows 10 Pro. The computers currently receive updates as part of the Current Branch. You need to configure the computers to receive updates as part of Current Branch for Business. What should you do?

- A. Select the Defer upgrades check box.
- B. upgrade to Windows 10 Enterprise.
- C. Change the product key.
- D. Clear the Give me updates for other Microsoft products when I update check box.

**Answer: A**

**QUESTION 49**

Hotspot Question

You have the following output from Windows PowerShell.

```
Name : Spooler
RequiredServices : {RPCSS, http}
CanPauseAndContinue : False
CanShutdown : False
CanStop : False
DisplayName : Print Spooler
DependentServices : {Fax}
MachineName : .
ServiceName : Spooler
ServicesDependedOn : {RPCSS, http}
ServiceHandle : SafeServiceHandle
Status : Stopped
ServiceType : Win32OwnProcess, InteractiveProcess
StartType : Disabled
Site :
Container :
```

You need to start the service. What command should you run first? To answer, select the appropriate options in the answer area.

<div>▼</div> <div>Restart-Service Resume-Service Set-Service Start-Service</div>	<i>-Name Spooler</i>	<div>▼</div> <div>\$True -CanShutdown \$False -Force -StartupType Automatic -Status Start</div>
--	----------------------	---

**Answer:**

<div>▼</div> <div>Restart-Service Resume-Service Set-Service Start-Service</div>	-Name Spooler	<div>▼</div> <div>\$True -CanShutdown \$False -Force -StartupType Automatic -Status Start</div>
--	---------------	---

**QUESTION 50**

You have computers that run Windows 10. You need to identify both active malware instances and past malware instances from the last three months. Which command should you run?

- A. Get-EventSubscriber
- B. Get-MpThreatCatalog
- C. Get-WindowsErrorReporting
- D. Get-MpThreatDetection

**Answer: D**

**QUESTION 51**

Hotspot Question

You run the Get-Service cmdlet and you receive the following output.

```
Name : Service1
RequiredServices : {}
CanPauseAndContinue : False
CanShutdown : False
CanStop : False
DisplayName : Service1
DependentServices : {Service2}
MachineName : .
ServiceName : Service1
ServicesDependedOn : {}
ServiceHandle :
Status : Stopped
ServiceType : Win32ShareProcess
StartType : Manual
Site :
Container :
```

```
Name : Service2
RequiredServices : {Service1}
CanPauseAndContinue : False
CanShutdown : False
CanStop : False
DisplayName : Service2
DependentServices : {Service3}
MachineName : .
ServiceName : Service2
ServicesDependedOn : {Service1}
ServiceHandle :
Status : Stopped
ServiceType : Win32ShareProcess
StartType : Automatic
Site :
Container :
```

```

Name : Service3
RequiredServices : {Service2}
CanPauseAndContinue : False
CanShutdown : False
CanStop : False
DisplayName : Service3
DependentServices : {}
MachineName : .
ServiceName : Service3
ServicesDependedOn : {Service2}
ServiceHandle :
Status : Stopped
ServiceType : Win32ShareProcess
StartType : Manual
Site :
Container :
    
```

You need to identify what occurs when the status of the services changes. What should you identify?  
To answer, select the appropriate options in the answer area.

If Service3 starts, the Service1 service:

If Service1 starts, the Service3 service:

If Service2 starts, the Service3 service:

**Answer:**

If Service3 starts, the Service1 service:

If Service1 starts, the Service3 service:

If Service2 starts, the Service3 service:

## QUESTION 52

Hotspot Question

You configure the Group Policy settings on a computer that runs Windows 10 as shown in the



following graphic.

Setting	State	Comment
Turn off Automatic Download of updates on Win8 machines	Not configured	No
<b>Turn off Automatic Download and Install of updates</b>	<b>Enabled</b>	No
Turn off the offer to update to the latest version of Windows	Not configured	No
Disable all apps from Windows Store	Not configured	No
Turn off the Store application	Enabled	No

5 setting(s)

Use the drop-down menus to select the answer choice that completes each statement based on the information graphic.

On the computer, the Windows Store app will [answer choice].

▼

be unavailable

have updates installed

be available to administrators only

All preinstalled applications [answer choice].

▼

will be updated

cannot be launched

never receive updates

**Answer:**

On the computer, the Windows Store app will [answer choice].

▼

**be unavailable**

have updates installed

be available to administrators only

All preinstalled applications [answer choice].

▼

will be updated

**cannot be launched**

**never receive updates**

### QUESTION 53

You plan to use the computer to test applications. You need to install Windows Insider Preview builds on the computer. What should you do?

- A. From Group Policy, configure the Add features to Windows 10 settings.
- B. From the Settings app, configure the Advanced options for Windows Update.
- C. From Group Policy, configure the Windows Update settings.
- D. From the Settings app, select Developer mode.



**Answer: B**

**QUESTION 54**

**Note:** This question is part of a series of questions that use the same set of answer choices. Each answer choice may be used once, more than once, or not at all.

You have a computer named Computer1 that has storage configured as shown in the following table.

Disk name	Size	Storage pool name
Disk1	200 GB	Pool1
Disk2	100 GB	Pool1
Disk3	500 GB	Pool1
Disk4	500 GB	Pool2
Disk5	500 GB	Pool2
Disk6	800 GB	None
Disk7	100 GB	Pool3
Disk8	100 GB	Pool3

Pool1 contains a storage space named Space1 that is 300 GB. Pool3 contains a storage space named Space2 that is 100 GB. Pool2 is empty. You discover that Disk2 experiences physical errors. You need to ensure that all of the data in Space1 is stored on other disks in the storage pool only. What should you use?

- A. Add-PhysicalDisk
- B. Diskpart
- C. New-VirtualDisk
- D. Remove-PhysicalDisk
- E. Resize-VirtualDisk
- F. Set-StoragePool
- G. Subst
- H. Update-Disk

**Answer: F**

**QUESTION 55**

**Note:** This question is part of a series of a questions that use the same set of answer choices. Each answer choice may be used once, more than once, or not at all.

You have a computer named Computer1 that has storage configured as shown in the following table.

Disk name	Size	Storage pool name
Disk1	200 GB	Pool1
Disk2	100 GB	Pool1
Disk3	500 GB	Pool1
Disk4	500 GB	Pool2
Disk5	500 GB	Pool2
Disk6	800 GB	None
Disk7	100 GB	Pool3
Disk8	100 GB	Pool3

Pool1 contains a storage space named Space1 that is 300 GB. Pool3 contains a storage space named Space2 that is 100 GB. Pool2 is empty. Disk8 fails. You add a new disk named Disk9 to Pool3. You need to remove Disk8 from Pool3. What should you use?

- A. Add-PhysicalDisk
- B. Diskpart
- C. New-VirtualDisk
- D. Remove-PhysicalDisk
- E. Resize-VirtualDisk
- F. Set-StoragePool
- G. Subst
- H. Update-Disk

**Answer: D**

**QUESTION 56**

**Note:** This question is part of a series of a questions that use the same set of answer choices. Each answer choice may be used once, more than once, or not at all.

You have a computer named Computer1 that has storage configured as shown in the following table.

Disk name	Size	Storage pool name
Disk1	200 GB	Pool1
Disk2	100 GB	Pool1
Disk3	500 GB	Pool1
Disk4	500 GB	Pool2
Disk5	500 GB	Pool2
Disk6	800 GB	None
Disk7	100 GB	Pool3
Disk8	100 GB	Pool3

Pool1 contains a storage space named Space1 that is 300 GB. Pool3 contains a storage space named Space2 that is 100 GB. Pool2 is empty. You need to configure Space2 to be 2 TB. What should you use?

- A. Add-PhysicalDisk
- B. Diskpart
- C. New-VirtualDisk
- D. Remove-PhysicalDisk
- E. Resize-VirtualDisk
- F. Set-StoragePool
- G. Subst Update-Disk

**Answer: E**

**QUESTION 57**

**Note: This question is part of a series of a questions that use the same set of answer choices. Each answer choice may be used once, more than once, or not at all.**

You have a computer named Computer1 that has storage configured as shown in the following table.

Disk name	Size	Storage pool name
Disk1	200 GB	Pool1
Disk2	100 GB	Pool1
Disk3	500 GB	Pool1
Disk4	500 GB	Pool2
Disk5	500 GB	Pool2
Disk6	800 GB	None
Disk7	100 GB	Pool3
Disk8	100 GB	Pool3

Pool1 contains a storage space named Space1 that is 300 GB. Pool3 contains a storage space named Space2 that is 100 GB. Pool2 is empty. Space1 contains 10 folders. You need to access each folder as a separate drive from Windows Explorer. What should you use?

- A. Add-PhysicalDisk
- B. Diskpart
- C. New-VirtualDisk
- D. Remove-PhysicalDisk
- E. Resize-VirtualDisk
- F. Set-StoragePool
- G. Subst
- H. Update-Disk

**Answer: G**

**QUESTION 58**

**Note: This question is part of a series of questions that use the same set of answer choices. Each answer choice may be used once, more than once, or not at all.**

Your network contains a single Active Directory domain. The domain contains a VPN server that supports all of the VPN protocols. You have mobile devices that run Windows 10 and have VPN connection to the VPN server. You need to ensure that when users work remotely and Connect to the VPN, only traffic for the corporate network is sent through the VPN server. What should you do?

- A. Click Turn on password protected sharing.
- B. Disable Network Discovery.
- C. Modify the Profile settings of an incoming firewall rule.
- D. Run the Add-VpnConnectionTriggerApplication cmdlet.
- E. Run the New-NetFirewallRule cmdlet and specify the -Direction Outbound parameter.
- F. Run the New-VpnConnection cmdlet.
- G. Run the Set-NetConnectionProfile cmdlet.
- H. Run the Set-VPNConnection cmdlet.

**Answer: H**

#### **QUESTION 59**

**Note: This question is part of a series of questions that use the same set of answer choices. Each answer choice may be used once, more than once, or not at all.**

A user connects to a wireless network and receives the following message:

"Do you want to allow your PC to be discoverable by other PCs and devices on this network?"

The user clicks No. The user is unable to browse to the shared folders of other computers on the network by using File Explorer. You need to ensure that the user can browse to the other computers. What should you do?

- A. Click Turn on password protected sharing.
- B. Disable Network Discovery.
- C. Modify the Profile settings of an incoming firewall rule.
- D. Run the Add-VpnConnectionTriggerApplication cmdlet.
- E. Run the New-NetFirewallRule cmdlet and specify the -Direction Outbound parameter.
- F. Run the New-VpnConnection cmdlet.
- G. Run the Set-NetConnectionProfile cmdlet.
- H. Run the Set-VPNConnection cmdlet.

**Answer: A**

#### **QUESTION 60**

**Note: This question is part of a series of questions that use the same set of answer choices. Each answer choice may be used once, more than once, or not at all.**

Your network contains a single Active Directory domain. The domain contains devices that run Windows 10 Enterprise. You need to prevent computers from connecting to hosts on subnet 131.107.0.0/24. What should you do?

- A. Click Turn on password protected sharing.
- B. Disable Network Discovery.
- C. Modify the Profile settings of an incoming firewall rule.
- D. Run the Add-VpnConnectionTriggerApplication cmdlet.
- E. Run the New-NetFirewallRule cmdlet and specify the -Direction Outbound parameter.
- F. Run the New-VpnConnection cmdlet.
- G. Run the Set-NetConnectionProfile cmdlet.
- H. Run the Set-VPNConnection cmdlet.

**Answer: B**

**QUESTION 61**

**Note:** This question is part of a series of questions that use the same set of answer choices. Each answer choice may be used once, more than once, or not at all.

Your network contains a single Active Directory domain. The domain contains computers that run Windows 10 Enterprise. The computers are configured as shown in the following table.

Computer name	Primary user	Computer type
PC_User1	User1	Laptop
PC_User2	User2	Laptop
PC_User3	User3	Tablet

When User1 works remotely, the user fails to access shared folders on the corporate network. When User 2 and User3 work remotely, they successfully connect to the shared folders on the corporate network. You need to ensure that User1 can connect to the shared folders without user interaction. What should you do?

- A. Click Turn on password protected sharing.
- B. Disable Network Discovery.
- C. Modify the Profile settings of an incoming firewall rule.
- D. Run the Add-VpnConnectionTriggerApplication cmdlet.
- E. Run the New-NetFirewallRule cmdlet and specify the -Direction Outbound parameter.
- F. Run the New-VpnConnection cmdlet.
- G. Run the Set-NetConnectionProfile cmdlet.
- H. Run the Set-VPNConnection cmdlet.

**Answer: A**

**QUESTION 62**

**Note:** This question is part of a series of questions that use the same scenario. For your convenience, the scenario is repeated in each question. Each question presents a different goal and answer choices, but the text of the scenario is exactly the same in each question in this series.

**Start of repeated scenario.**

Your network contains a single Active Directory domain named adatum.com. The network contains five servers configured as shown in the following table.

Server name	Domain/workgroup	Role
DC1	Adatum.com	Domain controller
DC2	Adatum.com	Domain controller
Server1	Adatum.com	Member server
Server2	Adatum.com	Member server
Test_Server	Workgroup	File server

All of the servers run Windows Server 2012 R2. Test\_Server has a shared folder named ShareA. Only local users have permissions to ShareA. The network contains a mainframe computer that is administered by using the Telnet protocol. The domain contains four client computers configured as shown in the following table.

Computer name	Primary user
Computer1	User1
Computer2	User2
Computer3	User3
Computer4	User4



All of the client computers run the 64-bit version of Windows. User3 frequently accesses ShareA. Remote Desktop is enabled on Computer4. Your company identifies the following requirements:

- Ensure that you can test unsigned device drivers on Computer1.
- Enable Credential Guard on Computer2.
- Run commands and cmdlets remotely on computer2.
- Configure User Account control (UAC) on Computer3 to prompt administrators for credentials when elevated privileges are required.
- Ensure that User1 can view and interact with a desktop session of User3.
- Ensure that User2 can use Telnet to manage the mainframe.
- Ensure that User4 can use Remote Desktop to access Computer4 remotely.

**End of repeated scenario.**

You need to meet the requirement of Computer1. Which tool should you use on Computer1?

- A. BCD Edit
- B. Device Manager
- C. Bootcfg
- D. System Properties

**Answer: A**

### QUESTION 63

**Note:** This question is part of a series of questions that use the same scenario. For your convenience, the scenario is repeated in each question. Each question presents a different goal and answer choices, but the text of the scenario is exactly the same in each question in this series.

**Start of repeated scenario.**

Your network contains a single Active Directory domain named adatum.com. The network contains five servers configured as shown in the following table.

Server name	Domain/workgroup	Role
DC1	Adatum.com	Domain controller
DC2	Adatum.com	Domain controller
Server1	Adatum.com	Member server
Server2	Adatum.com	Member server
Test_Server	Workgroup	File server

All of the servers run Windows Server 2012 R2. Test\_Server has a shared folder named ShareA. Only local users have permissions to ShareA. The network contains a mainframe computer that is administered by using the Telnet protocol. The domain contains four client computers configured as shown in the following table.

Computer name	Primary user
Computer1	User1
Computer2	User2
Computer3	User3
Computer4	User4

All of the client computers run the 64-bit version of Windows. User3 frequently accesses ShareA. Remote Desktop is enabled on Computer4. Your company identifies the following requirements:

- Ensure that you can test unsigned device drivers on Computer1.
- Enable Credential Guard on Computer2.
- Run commands and cmdlets remotely on computer2.
- Configure User Account control (UAC) on Computer3 to prompt administrators for credentials when elevated privileges are required.

- Ensure that User1 can view and interact with a desktop session of User3.
- Ensure that User2 can use Telnet to manage the mainframe.
- Ensure that User4 can use Remote Desktop to access Computer4 remotely.

**End of repeated scenario.**

You need to recommend a solution to meet the requirements of User1. What should you include in the recommendation?

- A. Remote Access Connection Manager
- B. Remote Desktop
- C. Remote Assistance
- D. Windows PowerShell Remoting

**Answer: A**

**QUESTION 64**

**Note:** This question is part of a series of questions that use the same scenario. For your convenience, the scenario is repeated in each question. Each question presents a different goal and answer choices, but the text of the scenario is exactly the same in each question in this series.

**Start of repeated scenario.**

Your network contains a single Active Directory domain named adatum.com. The network contains five servers configured as shown in the following table.

Server name	Domain/workgroup	Role
DC1	Adatum.com	Domain controller
DC2	Adatum.com	Domain controller
Server1	Adatum.com	Member server
Server2	Adatum.com	Member server
Test_Server	Workgroup	File server

All of the servers run Windows Server 2012 R2. Test\_Server has a shared folder named ShareA. Only local users have permissions to ShareA. The network contains a mainframe computer that is administered by using the Telnet protocol. The domain contains four client computers configured as shown in the following table.

Computer name	Primary user
Computer1	User1
Computer2	User2
Computer3	User3
Computer4	User4

All of the client computers run the 64-bit version of Windows. User3 frequently accesses ShareA. Remote Desktop is enabled on Computer4. Your company identifies the following requirements:

- Ensure that you can test unsigned device drivers on Computer1.
- Enable Credential Guard on Computer2.
- Run commands and cmdlets remotely on computer2.
- Configure User Account control (UAC) on Computer3 to prompt administrators for credentials when elevated privileges are required.
- Ensure that User1 can view and interact with a desktop session of User3.
- Ensure that User2 can use Telnet to manage the mainframe.
- Ensure that User4 can use Remote Desktop to access Computer4 remotely.

**End of repeated scenario.**

You need to meet the requirement for administering Computers remotely. Which remote management technology should you use?



- A. Windows PowerShell remoting
- B. Telnet
- C. Ps Exec
- D. Remote Desktop

**Answer: B**

**QUESTION 65**

**Note:** This question is part of a series of questions that use the same scenario. For your convenience, the scenario is repeated in each question. Each question presents a different goal and answer choices, but the text of the scenario is exactly the same in each question in this series.

**Start of repeated scenario.**

Your network contains a single Active Directory domain named adatum.com. The network contains five servers configured as shown in the following table.

Server name	Domain/workgroup	Role
DC1	Adatum.com	Domain controller
DC2	Adatum.com	Domain controller
Server1	Adatum.com	Member server
Server2	Adatum.com	Member server
Test_Server	Workgroup	File server

All of the servers run Windows Server 2012 R2. Test\_Server has a shared folder named ShareA. Only local users have permissions to ShareA. The network contains a mainframe computer that is administered by using the Telnet protocol. The domain contains four client computers configured as shown in the following table.

Computer name	Primary user
Computer1	User1
Computer2	User2
Computer3	User3
Computer4	User4

All of the client computers run the 64-bit version of Windows. User3 frequently accesses ShareA. Remote Desktop is enabled on Computer4. Your company identifies the following requirements:

- Ensure that you can test unsigned device drivers on Computer1.
- Enable Credential Guard on Computer2.
- Run commands and cmdlets remotely on computer2.
- Configure User Account control (UAC) on Computer3 to prompt administrators for credentials when elevated privileges are required.
- Ensure that User1 can view and interact with a desktop session of User3.
- Ensure that User2 can use Telnet to manage the mainframe.
- Ensure that User4 can use Remote Desktop to access Computer4 remotely.

**End of repeated scenario.**

You need to meet the requirement of User4. What should you do?

- A. Install a Universal Windows Platform (UWP) application.
- B. Modify the settings of a firewall rule.
- C. Install a Windows feature.
- D. Modify the membership of a local group.

**Answer: C**

**QUESTION 66**

You have a Key Management Service (KMS) host and an administrative workstation named Computer1. From Computer1, you need to validate the activation status on a computer named Computer2. What should you run?

- A. Get-RDLICENSEConfiguration computer2
- B. slmgr.vbs computer2 /dlv
- C. winrs.exe -r:Computer2 netdom.exe
- D. ospp.vbs /tokact:computer2

**Answer: A**

**QUESTION 67**

You have two computers named Computer1 and Computer2 that run Windows 10. On Computer1, you create a provisioning package named Package1. You plan to apply the provisioning package to Computer2. Which file must be applied to Computer2?

- A. Package1.icdproj.xml
- B. Customizations.xml
- C. Package1.ppkg
- D. Package1.cat

**Answer: C**

**QUESTION 68**

You have a computer named Computer1 that has the Hyper V feature enabled. You have two virtual machines named VM1 and VM2 hosted on Computer1. VM1 can communicate with VM2 and Computer1. VM1 fails to connect to the Internet- Computer1 can connect to the Internet. You need to ensure that VM1 can connect to the Internet. What should you do?

- A. On Computer 1, modify the network settings.
- B. Enable port mirroring on VM1.
- C. Create an external virtual switch and configure VM1 to use the switch.
- D. On VM1, select Enable virtual LAN identification.

**Answer: A**

**QUESTION 69**

Hotspot Question

A user fails to connect a mouse to a computer. The user sends you the following output:

```
PS C:\> Get-PnpDevice -Class Bluetooth
```

Status	Class	FriendlyName
-----	----	-----
Unknown	Bluetooth	Device Identification Service
Unknown	Bluetooth	Dell BT Travel Mouse
Unknown	Bluetooth	Microsoft Bluetooth LE Enumerator
Error	Bluetooth	Intel(R) Wireless Bluetooth(R)
Unknown	Bluetooth	Microsoft Bluetooth Enumerator

Use the drop-down menus to select the answer choice that completes each statement based on the information presented in output.

A Bluetooth mouse is [answer choice].

The error occurs because [answer choice].

**Answer:**

A Bluetooth mouse is [answer choice].

The error occurs because [answer choice].

**QUESTION 70**

Hotspot Question

You have three computers configured as shown in the following table.

Computer name	Operating system	Upgrade requirement
Computer1	Windows 7	Retain all installed applications.
Computer2	Windows 7	Remove all locally installed applications, but retain access to the user files.
Computer3	Windows 8	Remove all locally installed applications.

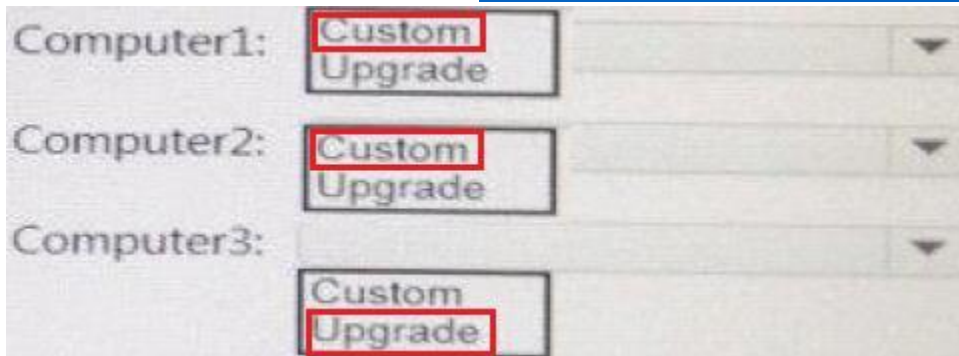
You plan to migrate the computers to Windows 10. Which installation option should you use for each computer? To answer, select the appropriate options in the answer area.

Computer1: Custom Upgrade

Computer2: Custom Upgrade

Computer3: Custom Upgrade

**Answer:**



#### QUESTION 71

You have a computer named Computer1 that runs the 64-bit version of Windows 10 Pro. You obtain a new driver for a device installed on Computer1. The driver is not digitally signed. You need to test the installation of the driver on Computer1. What should you do first?

- A. Run dism.exe and specify the /Add-Driver and /Force-Unsigned parameters.
- B. From Computer Configuration in Group Policy, configure the Driver Installation settings.
- C. From User Configuration in Group Policy, configure the Driver Installation settings.
- D. Restart Computer1 by using the advanced startup options.

**Answer: D**

#### QUESTION 72

You need to create a script to verify the activation status on 100 computers. What should you use in the script?

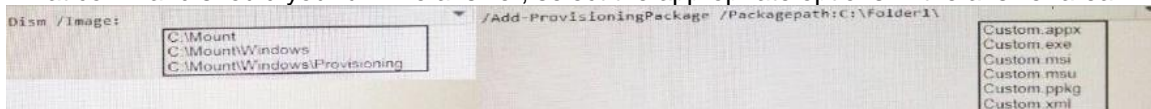
- A. the slmgr.vbs script and the /dli parameter
- B. the sfc.exe command and the /scannow parameter
- C. the slmgr.vbs script and the /ipk parameter
- D. the sfc.exe command and the /verifyonly parameter

**Answer: A**

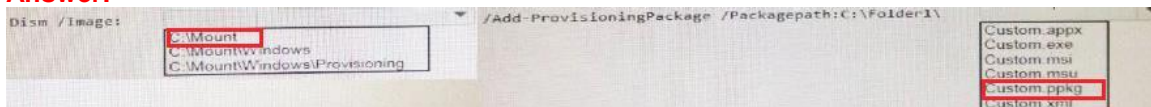
#### QUESTION 73

Hotspot Question

You have an image of Windows 10 that is mounted to C:\Mount. You create a provisioning package that is stored in C:\Folder. You need to customize the image by using the provisioning package. What command should you run? To answer, select the appropriate options in the answer area.



**Answer:**



#### QUESTION 74

You install Windows 10 on a computer named Computer1. Computer1 is a member of workgroup and will be used by multiple users to browse the Internet. You need to ensure that a file named

policy1.docx appears on the desktop of Computer1 for all users who use the computer. The solution must minimize the number of copies of policy1.docx. What should you do?

- A. Copy Policy1.docx to C:\Users\Default\Desktop.
- B. Copy Policy1.docx to C:\Users\Public\Desktop.
- C. From a Group Policy object (GPO), modify the Desktop settings.
- D. Use a Group Policy object (GPO) to configure Folder Redirection.

**Answer: B**

#### **QUESTION 75**

Your network contains single Active Directory domain. The domain contains two computers named Computer1 and Computer2. From Computer1, you need to view the installed devices and their associated drivers on Computer2. What should you use?

- A. the Get-PnpDevice cmdlet
- B. the Get-WindowsDriver cmdlet
- C. the driverquery.exe command
- D. the Get-OdbcDriver cmdlet

**Answer: C**

#### **QUESTION 76**

A user named User1 has a computer that runs Windows 10. User1 reports that Cortana displays news topics that the user wants to suppress. You need to suppress the news topics from being displayed. What should you modify?

- A. Reminders
- B. the Location settings
- C. the News app settings
- D. Notebook

**Answer: D**

#### **QUESTION 77**

**Note: This question is part of a series of questions that use the same scenario. For your convenience, the scenario is repeated in each question. Each question presents a different goal and answer choices, but the text of the scenario exactly the same in each question in this series.**

**Start of repeated scenario.**

Your network contains a single Active Directory domain named contoso.com. All computers are members of the domain and run the 64-bit version of Windows 10 Enterprise. On a test computer named Computer\_Test1, you pin several company-specific applications in a group named Contoso Apps, and then you export the start menu layout to a file named contoso.xml. You install Client Hyper-V on a computer named Computer6. You identify the following requirements:

- Install the Hyper V feature on a computer named Computer1.
- Use virtual smart card authentication on a computer named Computer2.
- Enable Secure Boot on a computer named Computer3.
- Connect a computer named Computer4 to a projector by using Miracast.
- Ensure that a user named User 1 can use keyboard shortcuts by pressing one key at a time.
- Ensure that you can share the clipboard between Computer6 and the virtual machines running on Computer6.



- Add the Contoso Apps group to the Start menu of a computer named Computer7.

**End of repeated scenario.**

Which hardware feature must Computer2 support?

- A. a smart card reader
- B. Second Level Address Translation (SLAT)
- C. Trusted Platform Module (TPM)
- D. Unified Extensible Firmware Interface (UEFI)

**Answer: A**

**QUESTION 78**

**Note:** This question is part of a series of questions that use the same scenario. For your convenience, the scenario is repeated in each question. Each question presents a different goal and answer choices, but the text of the scenario exactly the same in each question in this series.

**Start of repeated scenario.**

Your network contains a single Active Directory domain named contoso.com. All computers are members of the domain and run the 64-bit version of Windows 10 Enterprise. On a test computer named Computer\_Test1, you pin several company-specific applications in a group named Contoso Apps, and then you export the start menu layout to a file named contoso.xml. You install Client Hyper-V on a computer named Computer6. You identify the following requirements:

- Install the Hyper V feature on a computer named Computer1.
- Use virtual smart card authentication on a computer named Computer2.
- Enable Secure Boot on a computer named Computer3.
- Connect a computer named Computer4 to a projector by using Miracast.
- Ensure that a user named User 1 can use keyboard shortcuts by pressing one key at a time.
- Ensure that you can share the clipboard between Computer6 and the virtual machines running on Computer6.
- Add the Contoso Apps group to the Start menu of a computer named Computer7.

**End of repeated scenario.**

Which hardware feature must Computer4 must support?

- A. a Wi-Fi adapter
- B. a Mini DisplayPort connector
- C. a Bluetooth adapter
- D. an HDMI port

**Answer: A**

**QUESTION 79**

**Note:** This question is part of a series of questions that use the same scenario. For your convenience, the scenario is repeated in each question. Each question presents a different goal and answer choices, but the text of the scenario exactly the same in each question in this series.

**Start of repeated scenario.**

Your network contains a single Active Directory domain named contoso.com. All computers are members of the domain and run the 64-bit version of Windows 10 Enterprise. On a test computer named Computer\_Test1, you pin several company-specific applications in a group named Contoso Apps, and then you export the start menu layout to a file named contoso.xml. You install Client Hyper-V on a computer named Computer6. You identify the following requirements:



- Install the Hyper V feature on a computer named Computer1.
- Use virtual smart card authentication on a computer named Computer2.
- Enable Secure Boot on a computer named Computer3.
- Connect a computer named Computer4 to a projector by using Miracast.
- Ensure that a user named User 1 can use keyboard shortcuts by pressing one key at a time.
- Ensure that you can share the clipboard between Computer6 and the virtual machines running on Computer6.
- Add the Contoso Apps group to the Start menu of a computer named Computer7.

**End of repeated scenario.**

Which hardware component is required for Computer1?

- A. Trusted Platform Module (TPM)
- B. Trusted Boot
- C. Second Level Address Translation (SLAT)
- D. Secure Boot

**Answer: D**

**QUESTION 80**

**Note:** This question is part of a series of questions that use the same scenario. For your convenience, the scenario is repeated in each question. Each question presents a different goal and answer choices, but the text of the scenario exactly the same in each question in this series.

**Start of repeated scenario.**

Your network contains a single Active Directory domain named contoso.com. All computers are members of the domain and run the 64-bit version of Windows 10 Enterprise. On a test computer named Computer\_Test1, you pin several company-specific applications in a group named Contoso Apps, and then you export the start menu layout to a file named contoso.xml. You install Client Hyper-V on a computer named Computer6. You identify the following requirements:

- Install the Hyper V feature on a computer named Computer1.
- Use virtual smart card authentication on a computer named Computer2.
- Enable Secure Boot on a computer named Computer3.
- Connect a computer named Computer4 to a projector by using Miracast.
- Ensure that a user named User 1 can use keyboard shortcuts by pressing one key at a time.
- Ensure that you can share the clipboard between Computer6 and the virtual machines running on Computer6.
- Add the Contoso Apps group to the Start menu of a computer named Computer7.

**End of repeated scenario.**

Which hardware feature must Computer3 support.

- A. Data Execution Prevention (DEP)
- B. Unified Extensible Firmware Interface (UEFI)
- C. Trusted Platform Module (TPM)
- D. Second Level Address Translation (SLAT)

**Answer: D**

**QUESTION 81**

**Note:** This question is part of a series of questions that use the same set of answer choices. Each answer choice may be used once, more than once, or not at all.

You have a computer that has a dual boot configuration. Windows 10 Enterprise is installed on the local disk. Windows 10 Pro is installed in a VHDX file named Disk1.vhdx. Both of the installations are 64-bit versions. You start the computer to Windows 10 Enterprise. You need to ensure that you can install an unsigned driver to Windows 10 Pro when the computer starts in Windows 10 Pro. What should you run?

- A. Add-Windows Image
- B. bcdboot.exe
- C. bcdedit.exe
- D. bootcfg.exe
- E. bootim.exe
- F. bootsect.exe
- G. diskpart.exe
- H. Expand-Windows Image

**Answer: C**

#### **QUESTION 82**

**Note: This question is part of a series of questions that use the same set of answer choices. Each answer choice may be used once, more than once, or not at all.**

You purchase a new USB drive. You apply a custom image of Windows to the USB drive. You plan to modify the BIOS setting on a computer so that the computer can start from the USB drive. You need to ensure that you can start the computer by using the USB drive. What should you run?

- A. Add-Windows Image
- B. bcdboot.exe
- C. bcdedit.exe
- D. bootcfg.exe
- E. bootim.exe
- F. bootsect.exe
- G. diskpart.exe
- H. Expand-Windows Image

**Answer: D**

#### **QUESTION 83**

**Note: This question is part of a series of questions that use the same set of answer choices. Each answer choice may be used once, more than once, or not at all.**

You have a computer named Computer1. Computer1 has a virtual hard disk (VHD) named Disk1.vhcx. Windows is installed on Disk1.vhdx. Disk1.vhdx is visible in File Explorer as drive E. You need to configure Computer1 to start from VHDX. Hardware virtualization must not be available when Computer1 starts from VHDX. What should you run?

- A. Add-Windows Image
- B. bcdboot.exe
- C. bcdedit.exe
- D. bootcfg.exe
- E. bootim.exe
- F. bootsect.exe
- G. diskpart.exe
- H. Expand-Windows Image

**Answer: E**

**QUESTION 84**

**Note: This question is part of a series of questions that use the same set of answer choices. Each answer choice may be used once, more than once, or not at all.**

You have a computer named Computer1 that has a virtual hard disk (VHD) named Disk1.vhdx. You plan to configure Computer1 for dual boot from Disk1.vhdx. You need to install Windows on Disk1.vhdx by using dism.exe. What should you nm before you install Windows?

- A. Add-Windows Image
- B. bcdboot.exe
- C. bcdedit.exe
- D. bootcfg.exe
- E. bootim.exe
- F. bootsect.exe
- G. diskpart.exe
- H. Expand-Windows Image

**Answer: G**

**QUESTION 85**

You have a custom Microsoft Management Console (MMC) named Console 1 that contains several snapins. Users use Console1 to manage specific computer settings. Users report that every time they close Console1, they are prompted to save the MMC. You need to prevent the prompts to save Console1. What should you do?

- A. From the Details settings of the MMC file, modify the Authors property.
- B. From the File menu, click Add/Remove Snap-in. and then click Edit Extensions.
- C. From the File menu, click Options and then modify the console mode.
- D. Horn the Security settings of the MMC file, modify the permissions.

**Answer: C**

**QUESTION 86**

Your network contains a single Active Directory domain named contoso.com. The domain contains a computer named Computer1. You have five users configured as shown in the following table.

User name	Member of
Computer1\User1	Guests
Computer1\User2	Users
Computer1\User3	Users Administrators
Contoso\User4	Domain Users
Contoso\User5	Domain Users Domain Admins

Which two users can add a Microsoft account to their Windows account, and then sign in to Cumputer1 by using the Microsoft account?

- A. User1
- B. User2
- C. User3
- D. User4
- E. User5

**Answer: BDE**

**QUESTION 87**

You have a computer named Computer1 that has a 1-TB volume named E. You need to receive a notification when volume F has less than 100 GB of free space. Which tool should you use?

- A. Performance Monitor
- B. Disk Cleanup
- C. System Configuration
- D. Resource Monitor
- E. Event Viewer

**Answer: E**

**QUESTION 88**

Your networks contain a single Active Directory domain. On a domain controller, an administrator creates a custom Microsoft Management Console (MMC) that uses the Active Directory Users and Computer snap-in. The domain contains a computer named Computer1 that runs Windows 10. You use the computer to perform management tasks. You copy the custom MMC to the computer. You need to ensure that you can use MMC and all of the features of the MMC. What should you do on Computer1?

- A. Enable the Side load apps developer feature.
- B. install the Remote Server Administration Tools (RSAT).
- C. install the Microsoft Application Compatibility Toolkit (ACT).
- D. Disable User Account Control (UAC).

**Answer: B**

**QUESTION 89**

You have a computer named Computer1 that runs Windows 10. Computer1 has two volumes named C and D. Volume C is formatted NTFS and volume D is formatted exFAT. You need to ensure that you can recover files stored in D:\Data. What should you use?

- A. System Restore points
- B. File History
- C. wbadmin.exe
- D. Backup and Restore (Windows 7)

**Answer: B**

**QUESTION 90**

Hotspot Question

You have a Windows Server Update Services (WSUS) server. You need to configure a computer to receive updates from WSUS. The solution must ensure that the updates are installed only on Sunday at 20:00. Which two settings should you configure? To answer, select the appropriate settings in the answer area.

Local Group Policy Editor		
File Action View Help		
Setting	State	Comment
Do not display 'Install Updates and Shut Down' option in Sh...	Not configured	No
Do not adjust default option to 'Install Updates and Shut Do...	Not configured	No
Enabling Windows Update Power Management to automati...	Not configured	No
Always automatically restart at the scheduled time	Not configured	No
Configure Automatic Updates	Not configured	No
Specify intranet Microsoft update service location	Not configured	No
Defer Upgrades and Updates	Not configured	No
Automatic Updates detection frequency	Not configured	No
Do not connect to any Windows Update Internet locations	Not configured	No
Allow non-administrators to receive update notifications	Not configured	No
Turn on Software Notifications	Not configured	No
Allow Automatic Updates immediate installation	Not configured	No
Turn on recommended updates via Automatic Updates	Not configured	No
No auto-restart with logged on users for scheduled automat...	Not configured	No
Re-prompt for restart with scheduled installations	Not configured	No
Delay Restart for scheduled installations	Not configured	No
Reschedule Automatic Updates scheduled installations	Not configured	No
Enable client-side targeting	Not configured	No
Allow signed updates from an intranet Microsoft update ser...	Not configured	No

**Answer:**

Setting	State	Comment
Do not display 'Install Updates and Shut Down' option in Sh...	Not configured	No
Do not adjust default option to 'Install Updates and Shut Do...	Not configured	No
Enabling Windows Update Power Management to automati...	Not configured	No
Always automatically restart at the scheduled time	Not configured	No
Configure Automatic Updates	Not configured	No
Specify intranet Microsoft update service location	Not configured	No
Defer Upgrades and Updates	Not configured	No
Automatic Updates detection frequency	Not configured	No
Do not connect to any Windows Update Internet locations	Not configured	No

**QUESTION 91**

.....

**Get Complete Version Exam 70-698 Dumps with VCE and PDF Here**



<https://www.passleader.com/70-698.html>