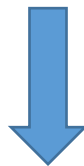


Microsoft MCSA Certification 70-740 Exam



- Vendor: Microsoft
- Exam Code: 70-740
- Exam Name: Installation, Storage, and Compute with Windows Server 2016

Get Complete Version Exam 70-740 Dumps with VCE and PDF Here



<https://www.passleader.com/70-740.html>

QUESTION 1

You have a server named Server1 that runs Windows Server 2016 and has the Hyper-V server role installed. On Server1, you plan to create a virtual machine named VM1. You need to ensure that you can start VM1 from the network. What are two possible ways to achieve the goal? Each correct answer presents a complete solution.

- A. Create a generation 2 virtual machine.
- B. Create a generation 1 virtual machine and run the Enable-NetAdapterPackageDirect cmdlet.
- C. Create a generation 1 virtual machine that has a legacy network adapter.
- D. Create a generation 1 virtual machine and configure a single root I/O virtualization (SRV-I/O) interface for the network adapter.

Answer: A

QUESTION 2

Note: This question is part of a series of questions that use the same similar answer choices. An answer choice may be correct for more than one question in the series. Each question is independent of the other questions in this series. Information and details provided in a question apply only to that question.

You have a Hyper-V host named Server1 that runs Windows Server 2016. Server1 has a dynamically expanding virtual hard disk (VHD) file that is 900 GB. The VHD contains 400 GB of free space. You need to reduce the amount of disk space used by the VHD. What should you run?

- A. the Mount-VHD cmdlet
- B. the Diskpart command
- C. the Set-VHD cmdlet
- D. the Set-VM cmdlet
- E. the Set-VMHost cmdlet
- F. the Set-VMProcessor cmdlet
- G. the Install-WindowsFeature cmdlet
- H. the Optimize-VHD cmdlet

Answer: H

QUESTION 3

Note: This question is part of a series of questions that present the same scenario. Each question in the series contains a unique solution that might meet the stated goals. Some question sets might have more than one correct solution, while others might not have a correct solution.

Your network contains an Active Directory forest. You install Windows Server 2016 on 10 virtual machines. You need to deploy the Web Server (IIS) server role identically to the virtual machines. Solution: You use Windows PowerShell Desired State Configuration (DSC) to create a default configuration and then you apply the configuration to the virtual machines.

Does this meet the goal?

- A. Yes
- B. No

Answer: A

QUESTION 4

You have a Nano Server named Nano1. Which cmdlet should you use to identify whether the DNS Server role is installed on Nano1?

- A. Find-NanoServerPackage
- B. Get-Package
- C. Find-Package
- D. Get-WindowsOptionalFeature

Answer: B

QUESTION 5

In this section, you'll see one or more sets of questions with the same scenario and problem. Each question presents a unique solution to the problem, and you must determine whether the solution meets the stated goals. Any of the solutions might solve the problem. It is also possible that none of the solutions solve the problem.

Once you answer a question in this section, you will NOT be able to return to it. As a result, these questions will not appear in the review screen.

Note: This question is part of a series of questions that present the same scenario. Each question in the series contains a unique solution. Determine whether the solution meets the stated goals.

Your network contains an Active Directory forest named contoso.com. The forest contains a member server named Server1 that runs Windows Server 2016. All domain controllers run Windows Server 2012 R2. Contoso com has the following configuration:

```
PS C:\> (Get-ADForest). ForestMode
Windows2008R2Forest

PS C:\> (Get-ADDomain). DomainMode
Windows2008R2Domain
PS C:\>
```

You plan to deploy an Active Directory Federation Services (AD FS) farm on Server1 and to configure device registration. You need to configure Active Directory to support the planned deployment.

Solution: You raise the domain functional level to Windows Server 2012 R2.

Does this meet the goal?

- A. Yes
- B. No

Answer: B

QUESTION 6

You are configuring a Windows Server 2016 failover cluster in a workgroup. Before installing one of the nodes, you run the ipconfig /all command and receive the following output:

```
Windows IP Configuration

Host Name . . . . . : Server1
Primary Dns Suffix . . . . . :
Node Type . . . . . : Hybrid
IP Routing Enabled. . . . . : No
WINS Proxy Enabled. . . . . : No
DNS Suffix Search List. . . . . :

Ethernet adapter Ethernet:

Connection-specific DNS Suffix . :
Description . . . . . : Microsoft Hyper-V Network Adapter
Physical Address. . . . . : 00-15-5D-01-62-17
DHCP Enabled. . . . . : Yes
Autoconfiguration Enabled . . . . : Yes
Link-local IPv6 Address . . . . . : fe80::7548:46d8:8ffc:d5ab%17(Preferred)
IPv4 Address. . . . . : 192.168.1.154(Preferred)
Subnet Mask . . . . . : 255.255.255.0
Default Gateway . . . . . : 192.168.1.10
DHCPv6 IAID . . . . . : 369099429
DHCPv6 Client DUID. . . . . : 00-01-00-01-1A-1D-5D-60-00-02-A5-4E-F4-85
DNS Servers . . . . . : 192.168.1.32
NetBIOS over Tcpip. . . . . : Disabled
```

You need to ensure that Server1 can be added as a node in the cluster. What should you do?

- A. Assign a static IP address
- B. Change the Node Type to Broadcast
- C. Configure a DNS suffix
- D. Enable NetBIOS over TCP/IP

Answer: C

QUESTION 7

Note: This question is part of a series of questions that present the same scenario. Each question in the series contains a unique solution that might meet the stated goals. Some question sets might have more than one correct solution, while others might not have a correct solution. After you answer a question in this section, you will NOT be able to return to it. As a result, these questions will not appear in the review screen.

You are a server administrator at a company named Contoso, Ltd. Contoso has a Windows Server 2016 Hyper-V environment configured as shown in the following table:

Hyper-V host name	Configuration	Virtual switch name
Host1	<ul style="list-style-type: none"> • Uses an Intel processor • Is a member of a SAN named SAN1 	Switch1
Host2	<ul style="list-style-type: none"> • Uses an AMD processor • Has local storage only 	Switch2
Host3	<ul style="list-style-type: none"> • Uses an Intel processor • Is a member of a SAN named SAN1 	Switch1
Host4	<ul style="list-style-type: none"> • Uses an Intel processor • Has local storage only 	Switch2

All of the virtual switches are of the external type. You need to ensure that you can move virtual machines between the hosts without causing the virtual machines to disconnect from the network. Solution: You implement a Hyper-V Replica between Host2 and Host4. Does this meet the goal?

- A. Yes
- B. No

Answer: A

QUESTION 8

Note: This question is part of a series of questions that present the same scenario. Each question in the series contains a unique solution that might meet the stated goals. Some question sets might have more than one correct solution, while others might not have a correct solution. After you answer a question in this section, you will NOT be able to return to it. As a result, these questions will not appear in the review screen.

You have two servers that run Windows Server 2016. You plan to create a Network load Balancing (NLB) cluster that will contain both servers. You need to configure the network cards on the servers for the planned NLB configuration.

Solution: You configure the network cards to be on the same subnet and to have dynamic IP addresses. You configure the cluster to use multicast.

Does this meet the goal?

- A. Yes
- B. No

Answer: A

QUESTION 9

You have a server named Server1 that runs Windows Server 2016. You need to configure Server1 as a multitenant RAS Gateway. What should you install on Server1?

- A. the Network Policy and Access Services server role
- B. the Remote Access server role
- C. the Data Center Bridging feature
- D. the Network Controller server role

Answer: B

QUESTION 10

In this section, you'll see one or more sets of questions with the same scenario and problem. Each question presents a unique solution to the problem, and you must determine whether the solution meets the stated goals. Any of the solutions might solve the problem. It is also possible that none of the solutions solve the problem.

Once you answer a question in this section, you will NOT be able to return to it. As a result, these questions will not appear in the review screen.

Note: This question is part of a series of questions that present the same scenario. Each question in the series contains a unique solution. Determine whether the solution meets the stated goals.

Your network contains an Active Directory forest named contoso.com. The forest contains a member server named Server1 that runs Windows Server 2016. All domain controllers run Windows Server 2012 R2. Contoso.com has the following configuration:

```
PS C:\> (Get-ADForest). ForestMode
Windows2008R2Forest

PS C:\> (Get-ADDomain). DomainMode
Windows2008R2Domain
PS C:\>
```

You plan to deploy an Active Directory Federation Services (AD FS) farm on Server1 and to configure device registration. You need to configure Active Directory to support the planned deployment.

Solution: You raise the forest functional level to Windows Server 2012 R2.

Does this meet the goal?

- A. Yes
- B. No

Answer: A

QUESTION 11

Note: This question is part of a series of questions that present the same scenario. Each question in the series contains a unique solution that might meet the stated goals. Some question sets might have more than one correct solution, while others might not have a correct solution. After you answer a question in this section, you will NOT be able to return to it. As a result, these questions will not appear in the review screen.

You are a server administrator at a company named Contoso, Ltd. Contoso has a Windows Server 2016 Hyper-V environment configured as shown in the following table:

Hyper-V host name	Configuration	Virtual switch name
Host1	<ul style="list-style-type: none">• Uses an Intel processor• Is a member of a SAN named SAN1	Switch1
Host2	<ul style="list-style-type: none">• Uses an AMD processor• Has local storage only	Switch2
Host3	<ul style="list-style-type: none">• Uses an Intel processor• Is a member of a SAN named SAN1	Switch1
Host4	<ul style="list-style-type: none">• Uses an Intel processor• Has local storage only	Switch2

All of the virtual switches are of the external type. You need to ensure that you can move virtual machines between the hosts without causing the virtual machines to disconnect from the network.

Solution: You implement live migration by using Host3 and Host4.

Does this meet the goal?

- A. Yes
- B. No

Answer: A

QUESTION 12

You need to ensure that VM1 and VM2 can communicate with each other only. The solution must prevent VM1 and VM2 from communicating with Server1. Which cmdlet should you use?

- A. Set-NetNeighbor
- B. Remove-VMSwitchTeamMember
- C. Set-VMSwitch
- D. Enable-VMSwitchExtension

Answer: C

QUESTION 13

You have a Windows Server 2016 Hyper-V failover cluster that contains two nodes named Node1 and Node2. On Node1, you create a virtual machine named VM01 by using Hyper-V Manager. You need to configure VM01 to move to Node2 automatically if Node1 becomes unavailable. What should you do?

- A. From Failover Cluster manager, run the configure Role actions.
- B. From Hyper-V Manager, click VM01 and click Enable Replication.
- C. From Hyper-V Manager Click Node 1 and the modify the hyper-V settings.
- D. From Windows Powershell, run the Enable-VMReplication cmdlet.

Answer: D

QUESTION 14

You have a server named Served that runs Windows Server 2016. Server1 will be used as a VPN server. You need to configure Server1 to support VPN Reconnect. Which VPN protocol should you use?

- A. PPTP
- B. L2TP
- C. SSTP
- D. IKEv2

Answer: D

QUESTION 15

Note: This question is part of a series of questions that present the same scenario. Each question in the series contains a unique solution that might meet the stated goals. Some question sets might have more than one correct solution, while others might not have a correct solution.

You have a server named Server1 that runs Windows Server 2016. Server1 hosts a line-of-business application named App1. App1 has a memory leak that occasionally causes the application to consume an excessive amount of memory. You need to log an event in the Application event log whenever App1 consume more than 4 GB of memory.

Solution: You create a system configuration information data collector.

Does this meet the goal?

- A. Yes
- B. No

Answer: B

QUESTION 16

You have a server named Server1 that runs Windows Server 2016. You install the Docker daemon on Server1. You need to configure the Docker daemon to accept connections only on TCP port 64500. What should you do?

- A. Run the New-NetFirewallRule cmdlet
- B. Run the Set-ServiceWindows PowerShell cmdlet
- C. Edit the daemon.json file
- D. Edit the configuration json file

Answer: C

QUESTION 17

Note: This question is part of a series of questions that present the same scenario. Each question in the series contains a unique solution that might meet the stated goals. Some question sets might have more than one correct solution, while others might not have a correct solution. After you answer a question in this section, you will NOT be able to return to it. As a result, these questions will not appear in the review screen.

You have two servers that run Windows Server 2016. You plan to create a Network Load Balancing (NLB) cluster that will contain both servers. You need to configure the network cards on the servers for the planned NLB configuration.

Solution: You configure the network cards to be on the same subnet and to have static IP addresses. You configure the cluster to use unicast.

Does this meet the goal?

- A. Yes
- B. No

Answer: A

QUESTION 18

You have a Hyper-V host named Server1 that runs Windows Server 2016. Server1 contains four virtual machines that are configured as shown in the following table:

Virtual machine name	Configuration
VM1	A shielded virtual machine that runs Windows Server 2012 R2
VM2	A shielded virtual machine that runs Windows Server 2016
VM3	A virtual machine that runs Windows Server 2012 R2 and has Secure Boot enabled
VM4	A virtual machine that runs Windows Server 2016 and has all of its drives protected by using BitLocker Drive Encryption (BitLocker)

To which machine or machines can you connect by using Virtual Machine Connection from Hyper-V Manager?

- A. VM1, VM2, VM3 and VM4
- B. VM4 only
- C. VM1 and VM2 only
- D. VM3 and VM4 only
- E. VM2 only

Answer: C

QUESTION 19

Note: This question is part of a series of questions that use the same similar answer choices.

An answer choice may be correct for more than one question in the series. Each question is independent of the other questions in this series. Information and details provided in a question apply only to that question.

You have two servers named Server1 and Server2 that run Windows Server 2016. Server1 and Server2 have the Hyper-V server role installed. An iSCSI SAN connects to the network. You create a LUN on the SAN and configure both servers to connect to the iSCSI target. You create a failover cluster and add Server1 and Server2 to the cluster. You connect both servers to the iSCSI target and format the shared storage. You need to add the shared storage to the cluster. The solution must ensure that virtual machines running on both nodes can access the shared storage simultaneously. Which tool should you use?

- A. the clussvc.exe command
- B. the cluster.exe command
- C. the Computer Management console
- D. the configurehyperv.exe command
- E. the Disk Management console
- F. the Failover Cluster Manager console
- G. the Hyper-V Manager console
- H. the Server Manager Desktop app

Answer: F

QUESTION 20

Note: This question is part of a series of questions that present the same scenario. Each question in the series contains a unique solution that might meet the stated goals. Some question sets might have more than one correct solution, while others might not have a correct solution. After you answer a question in this section, you will NOT be able to return to it. As a result, these questions will not appear in the review screen.

You are a server administrator at a company named Contoso, Ltd. Contoso has a Windows Server 2016 Hyper-V environment configured as shown in the following table:

Hyper-V host name	Configuration	Virtual switch name
Host1	<ul style="list-style-type: none">• Uses an Intel processor• Is a member of a SAN named SAN1	Switch1
Host2	<ul style="list-style-type: none">• Uses an AMD processor• Has local storage only	Switch2
Host3	<ul style="list-style-type: none">• Uses an Intel processor• Is a member of a SAN named SAN1	Switch1
Host4	<ul style="list-style-type: none">• Uses an Intel processor• Has local storage only	Switch2

All of the virtual switches are of the external type. You need to ensure that you can move virtual machines between the hosts without causing the virtual machines to disconnect from the network.

Solution: You implement live migration by using Host1 and Host2.

Does this meet the goal?

- A. Yes
- B. No

Answer: B

QUESTION 21

You have an Active Directory domain named Contoso.com. The domain contains servers named Server1 and Server2 that run Windows Server 2016. You install the Remote Access server role on Server1. You install the Network Policy and Access Services server role on Server2. You need to configure Server1 to use Server2 as a RADIUS server. What should you do?

- A. From Routing and Remote Access, configure the authentication provider.
- B. From the Connection Manager Administration Kit, create a Connection Manager profile.
- C. From Server Manager, create an Access Policy.
- D. From Active Directory Users and Computers, modify the Delegation settings of the Server1 computer account.

Answer: A

QUESTION 22

Note: This question is part of a series of questions that use the same scenario. For your convenience, the scenario is repeated in each question. Each question presents a different goal and answer choices, but the text of the scenario is exactly the same in each question in this series.

Start of Repeated Scenario:

Your network contains an Active Directory domain named contoso.com. The functional level of the forest and the domain is Windows Server 2008 R2. All servers in the domain run Windows Server 2016 Standard. The domain contains 300 client computers that run either Windows 8.1 or Windows 10. The domain contains nine servers that are configured as shown in the following table:

name	Configuration	Planned changes
Server1	Domain controller	None
Server2	File server	Run Failover Clustering and Storage Spaces
Server3	File server	Direct
Server4	Hyper-V host	Run Failover Clustering and Storage Spaces
Server5	Hyper-V host	Direct
Server6	Member server	Run shielded virtual machines
VM1	Virtual machine hosted on Server 5	None
VM2	Virtual machine hosted on Server 5	None
VM3	Virtual machine hosted on Server 5	None

The virtual machines are configured as follows:

- Each virtual machine has one virtual network adapter.
- VM1 and VM2 are part of a Network Load Balancing (NLB) cluster.
- All of the servers on the network can communicate with all of the virtual machines.

End of repeated Scenario.

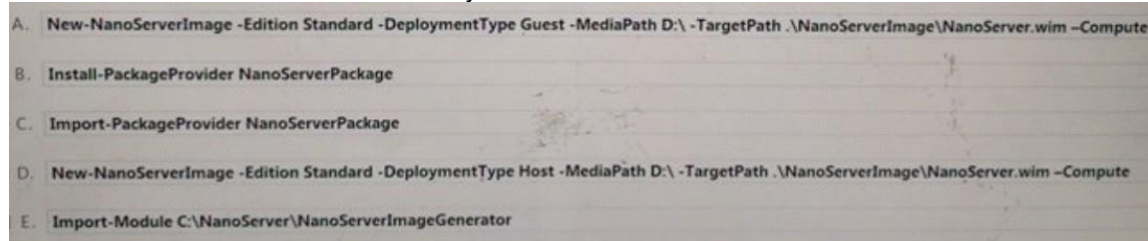
On Server4, you plan to provision a new volume that will be used to create large, fixed-size VHDX files. Which type of file system should you use the new volume to minimize the amount of time required to create the VHDX files?

- A. ReFS
- B. NTFS
- C. CVFS
- D. exFAT

Answer: C

QUESTION 23

You have a server named Server1 that runs Windows Server 2016. The Windows Server 2016 installation media is mounted as drive D. You copy the NanoServerimageGenerator folder from the D:\NanoServer folder to the C:\NanoServer folder. You need to create a custom Nano Server image that includes the Hyper-V server role. The image will be used to deploy Nano Servers to physical servers. Which two commands should you run?



- A. Option A
- B. Option B
- C. Option C
- D. Option D
- E. Option E

Answer: BD

QUESTION 24

You need to create highly available storage spaces that connect to directly attached storage on the hosts. Which cmdlet should you use?

- A. Enable-ClusterStorageSpacesDired
- B. Set-StoragePool
- C. Add-ClusterDisk
- D. Update-ClusterVirtualMachineConfiguration

Answer: A

QUESTION 25

Note: This question is part of a series of questions that use the same scenario. For your convenience, the scenario is repeated in each question. Each question presents a different goal and answer choices, but the text of the scenario is exactly the same in each question in this series.

Start of Repeated Scenario:

Your network contains an Active Directory domain named contoso.com. The functional level of the forest and the domain is Windows Server 2008 R2. All servers in the domain run Windows Server 2016 Standard. The domain contains 300 client computers that run either Windows 8.1 or Windows 10. The domain contains nine servers that are configured as shown in the following table:

name	Configuration	Planned changes
Server1	Domain controller	None
Server2	File server	Run Failover Clustering and Storage Spaces
Server3	File server	Direct
Server4	Hyper-V host	Run Failover Clustering and Storage Spaces
Server5	Hyper-V host	Direct
Server6	Member server	Run shielded virtual machines
VM1	Virtual machine hosted on Server 5	None
VM2	Virtual machine hosted on Server 5	None
VM3	Virtual machine hosted on Server 5	None

The virtual machines are configured as follows:

- Each virtual machine has one virtual network adapter.
- VM1 and VM2 are part of a Network Load Balancing (NLB) cluster.
- All of the servers on the network can communicate with all of the virtual machines.

End of repeated Scenario.

You need to minimize the likelihood that a virtual machine running malicious code will consume excessive resources on Server5. What should you do?

- A. Configure the virtual machines as shielded virtual machines.
- B. Run the Set-VMProcessor cmdlet and specify the EnableHostResourceProtection Parameter.
- C. Run the Set-VMProcessor cmdlet and specify the MaximumCountPerNumaNode Parameter.
- D. Configure VM Network Adapter Isolation.

Answer: A

QUESTION 26

Note: This question is part of a series of questions that present the same scenario. Each question in the series contains a unique solution that might meet the stated goals. Some question sets might have more than one correct solution, while others might not have a correct solution.

Your network contains an Active Directory forest. You install Windows Server 2016 on 10 virtual machines. You need to deploy the Web Server (IIS) server role identically to the virtual machines. Solution: You create a software installation package, and then you publish the package to the virtual machines by using a Group Policy object (GPO).

Does this meet the goal?

- A. Yes
- B. No

Answer: B

QUESTION 27

You have an application named App1. App1 is distributed to multiple Hyper-V virtual machines in a multitenant environment. You need to ensure that the traffic is distributed evenly among the virtual machines that host App1. What should you include in the environment?

- A. Network Controller and Windows Server Network Load Balancing (NLB) nodes
- B. Network Controller and Windows Server Software Load Balancing (SLB) nodes

- C. a RAS Gateway and Windows Server Network Load Balancing (NLB) nodes
- D. a RAS Gateway and Windows Server Software Load Balancing (SLB) nodes

Answer: D

QUESTION 28

In this section, you'll see one or more sets of questions with the same scenario and problem. Each question presents a unique solution to the problem, and you must determine whether the solution meets the stated goals. Any of the solutions might solve the problem. It is also possible that none of the solutions solve the problem.

Once you answer a question in this section, you will NOT be able to return to it. As a result, these questions will not appear in the review screen.

Note: This question is part of a series of questions that present the same scenario. Each question in the series contains a unique solution. Determine whether the solution meets the stated goals.

Your network contains an Active Directory domain named contoso.com. The domain contains a DNS server named Server1. All client computers run Windows 10. On Server1, you have the following zone configuration:

ZoneName	ZoneType	IsAutoCreated	IsDnsIntegrated	IsReverseLookupZone	IsSign
_msdcs.contoso.com	Primary	False	True	False	False
adatum.com	Forwarder	False	False	False	False
contoso.com	Primary	False	True	False	False
fabrikam.com	Primary	False	False	False	True
TrustAnchors	Primary	False	True	False	False

You have the following subnets defined on Server1.

Name	IPv4Subnet	IPv6Subnet
Subnet1	{10.0.0.0/24}	
Subnet2	{10.0.1.0/24}	
Subnet3	{192.168.15.0/24}	
Subnet4	{172.16.1.0/24}	

You need to prevent Server1 from resolving queries from DNS clients located on Subnet4. Server1 must resolve queries from all other DNS clients.

Solution From Windows PowerShell on Server1, you run the Export-DnsServerDnsSecPublicKey cmdlet.

Does this meet the goal?

- A. Yes
- B. No

Answer: B

QUESTION 29

Note: This question is part of a series of questions that use the same similar answer choices. An answer choice may be correct for more than one question in the series. Each question is independent of the other questions in this series. Information and details provided in a question apply only to that question.

You have a two-node Hyper-V cluster named Cluster1. As virtual machine named VM1 runs on Cluster1. You need to configure monitoring of VM1. The solution must move VM1 to a different node if the Print Spooler service on VM1 stops unexpectedly. Which tool should you use?

- A. the clussvc.exe command

- B. the cluster.exe command
- C. the Computer Management console
- D. the configurehyperv.exe command
- E. the Disk Management console
- F. the Failover Cluster Manager console
- G. the Hyper-V Manager console
- H. the Server Manager Desktop app

Answer: F

QUESTION 30

You have a failover cluster named Cluster1. A virtual machine named VM1 is a highly available virtual machine that runs on Cluster1. A custom application named App1 runs on VM1. You need to configure monitoring of VM1. If App1 adds an error entry to the Application event log, VM1 should be automatically rebooted and moved to another cluster node. Which tool should you use?

- A. Hyper-V Manager
- B. Failover Cluster Manager
- C. Server Manager
- D. Resource Monitor

Answer: B

QUESTION 31

Note: This question is part of a series of questions that use the same similar answer choices. An answer choice may be correct for more than one question in the series. Each question is independent of the other questions in this series. Information and details provided in a question apply only to that question.

You have a two-node Hyper-V cluster named Cluster1 at a primary location and a stand-alone Hyper-V host named Server1 at a secondary location. A virtual machine named VM1 runs on Cluster1. You configure a Hyper-V Replica of VM1 to Server1. You need to perform a Test Failover of VM1. Which tool should you use?

- A. the clussvc.exe command
- B. the cluster.exe command
- C. the Computer Management console
- D. the configurehyperv.exe command
- E. the Disk Management console
- F. the Failover Cluster Manager console
- G. the Hyper-V Manager console
- H. the Server Manager Desktop app

Answer: G

QUESTION 32

Your company has 10 offices. Each office has a local network that contains several Hyper-V hosts that run Windows Server 2016. All of the offices are connected by high speed, low latency WAN links. You need to ensure that you can use QoS policies for Live Migration traffic between the offices. Which component should you install?

- A. the Multipath I/O feature
- B. the Routing role service

- C. the Network Controller server role
- D. the Canary Network Diagnostics feature
- E. the Data Center Bridging feature

Answer: CE

QUESTION 33

Note: This question is part of a series of questions that use the same similar answer choices. An answer choice may be correct for more than one question in the series. Each question is independent of the other questions in this series. Information and details provided in a question apply only to that question.

You have a Hyper-V host named Server1 that runs Windows Server 2016. Server1 contains a virtual machine named VM1. You need to ensure that you can use nested virtualization on VM1. What should you run on Server1?

- A. the Mount-VHD cmdlet
- B. the Diskpart command
- C. the Set-VHD cmdlet
- D. the Set-VM cmdlet
- E. the Set-VMHost cmdlet
- F. the Set-VMProcessor cmdlet
- G. the Install-WindowsFeature cmdlet
- H. the Optimize-VHD cmdlet

Answer: F

QUESTION 34

Your network contains a new Active Directory domain named contoso.com. You have a security policy that states that new servers should run Nano Server whenever possible. Which server role can be deployed on a Nano Server?

- A. Active Directory Domain Services
- B. DHCP Server
- C. Network Policy and Access Services
- D. Web Server (IIS)

Answer: B

QUESTION 35

You have a Hyper-V host that runs Windows Server 2016. The host contains a virtual machine named VM1. VM1 has resource metering enabled. You need to use resource metering to track the amount of network traffic that VM1 sends to the 10.0.0.0/8 network. Which cmdlet should you run?

- A. Add-VMNetworkAdapteId
- B. Set-VMNetworkAdapter
- C. New-VMResourcePool
- D. Set-VMNetworkAdapterRoutingDomamMapping

Answer: B

QUESTION 36

Note: This question is part of a series of questions that use the same similar answer choices

An answer choice may be correct for more than one question in the series. Each question is independent of the other questions in this series. Information and details provided in a question apply only to that question.

You have a Hyper-V host named Server1 that runs Windows Server 2016. You plan to deploy several shielded virtual machines on Server1. You deploy a Host Guardian on a new server. You need to ensure that Server1 can host shielded virtual machines. What should you run first?

- A. the Mount-VHD cmdlet
- B. the Diskpart command
- C. the Set-VHD cmdlet
- D. the Set-VM cmdlet
- E. the Set-VMHost cmdlet
- F. the Set-VMProcessor cmdlet
- G. the Install-WindowsFeature cmdlet
- H. the Optimize-VHD cmdlet

Answer: G

QUESTION 37

You have a server named Server1 that runs Windows Server 2016. You need to install the DNS Server role on Server1. What should you run?

- A. the dns.exe command
- B. the optionalfeature.exe command
- C. the Install-Package cmdlet
- D. the Enable-WindowsOptionalFeature cmdlet

Answer: A

QUESTION 38

Your network contains an Active Directory domain named contoso.com. The domain contains two servers named Server1 and Server2 that have the same hardware configuration. You need to asynchronously replicate volume F: from Server1 to Server2. What should you do?

- A. Run New-SRPartnership and specify the -ReplcationMode parameter.
- B. install the Failover Clustering feature and create a new cluster resource group.
- C. Install the Failover Clustering feature and use Cluster Shared Volumes (CSV).
- D. Run Set-DfsrServiceConfiguration and specify the -RPCPort parameter.

Answer: A

QUESTION 39

You have a Nano Server named Nano1. You deploy several containers to Nano1 that use an image named Image1. You need to deploy a new container to Nano1 that uses Image1. What should you run?

- A. the Install-NanoServerPackage cmdlet
- B. the Install-WindowsFeature cmdlet
- C. the docker load command
- D. the docker run command

Answer: D

QUESTION 40

You deploy a Hyper-V server named Served in an isolated test environment. The test environment is prevented from accessing the Internet. Server1 runs the Datacenter edition of Windows Server 2016. You plan to deploy the following guest virtual machines on the server:

Quantity	Operating system	Domain member
10	Windows Server 2012 R2	Yes
4	Windows Server 2016	No
5	Windows Server 2016	Yes

Which activation model should you use for the virtual machines?

- A. Multiple Activation Key (MAK)
- B. Automatic Virtual Machine Activation (AVMA)
- C. Original Equipment Manufacturer (OEM) key
- D. Key Management Service (KMS)

Answer: B

QUESTION 41

Note: This question is part of a series of questions that present the same scenario. Each question in the series contains a unique solution that might meet the stated goals. Some question sets might have more than one correct solution, while others might not have a correct solution.

Your network contains an Active Directory forest. You install Windows Server 2016 on 10 virtual machines. You need to deploy the Web Server (IIS) server role identically to the virtual machines. Solution: From a Group policy object (GPO), you create an application control policy, and then you apply the policy to the virtual machines.

Does this meet the goal?

- A. Yes
- B. No

Answer: A

QUESTION 42

You have a server named Server 1 that runs Windows Server 2016. Server 1 has Internet connectivity. You have a Nano Server image. You need to download and save a Nano Server package in the Nano Server image. The package is NOT included in the Windows Server 2016 installation media. Which two cmdlets should you run on Server1.

- A. Set-PackageSource
- B. Install-PackageProvider
- C. Add-AppxProvisioncdPackage
- D. Save-NanoServer
- E. Package Add WindowsPackage

Answer: CE

QUESTION 43

You have four servers named Server 1, Server2, Server3 and Server4 that run Windows Server

2016. Each server has a single 4-TB SATA hard disk. To each server, you attach a new 4 TB SATA hard disk. You need to create a new storage cluster that uses Storage Spaces Direct. The storage pool must contain all of the new disks. Which command should you run before you enable Storage Space Direct?

- A. Add-ClusterSharedVolume -Name "Disk 1" -Cluster Cluster 1
- B. New-Cluster -Name Cluster1 -Node 'Server1', Server2, Server3, Server4 -NoStorage
- C. Get-ClusterAvailableDisk -Cluster Cluster1 | Add-ClusterDisk
- D. New-ClusterStorageEnclosure -id 1 -name Cluster 1 -type jbod -ConnectionString Server1, Server2, Server3, Server4

Answer: C

QUESTION 44

Note: This question is part of a series of questions that use the same similar answer choices. An answer choice may be correct for more than one question in the series. Each question is independent of the other questions in this series. Information and details provided in a question apply only to that question.

You have a Hyper-V host named Server1 that runs Windows Server 2016. Server1 has a virtual machine named VM1 that uses a single VHDX file. VM1 is configured shown in the following table:

Configuration	Details
Virtual machine generation	V2
Operating system	Windows 8
File system	NTFS
Number of partitions	1
Disk type	Basic
Unallocated disk space	100 GB

You plan to use VM1 as a virtual Machine Template to deploy shielded virtual machines. You need to ensure that VM1 can be used to deploy shielded virtual machines. What should you run?

- A. the Mount-VHD cmdlet
- B. the Diskpart command
- C. the Set-VHD cmdlet
- D. the Set-VM cmdlet
- E. the Set-VMHost cmdlet
- F. the Set-VMProcessor cmdlet
- G. the Install-WindowsFeature cmdlet
- H. the Optimize-VHD cmdlet

Answer: B

QUESTION 45

In this section, you'll see one or more sets of questions with the same scenario and problem. Each question presents a unique solution to the problem, and you must determine whether the solution meets the stated goals. Any of the solutions might solve the problem. It is also possible that none of the solutions solve the problem.

Once you answer a question in this section, you will NOT be able to return to it. As a result, these questions will not appear in the review screen.

Note: This question is part of a series of questions that present the same scenario. Each question in the series contains a unique solution. Determine whether the solution meets the

stated goals.

Your network contains an Active Directory domain named contoso.com. The domain contains a DNS server named Server1. All client computers run Windows 10. On Server1, you have the following zone configuration:

ZoneName	ZoneType	IsAutoCreated	IsDsIntegrated	IsReverseLookupZone	IsSign
_msdcs.contoso.com	Primary	False	True	False	False
adatum.com	Forwarder	False	False	False	False
contoso.com	Primary	False	True	False	False
fabrikam.com	Primary	False	False	False	True
TrustAnchors	Primary	False	True	False	False

You have the following subnets defined on Server1.

Name	IPv4Subnet	IPv6Subnet
Subnet1	{10.0.0.0/24}	
Subnet2	{10.0.1.0/24}	
Subnet3	{192.168.15.0/24}	
Subnet4	{172.16.1.0/24}	

You need to prevent Server1 from resolving queries from DNS clients located on Subnet4. Server1 must resolve queries from all other DNS clients.

Solution: From a Group Policy object (GPO) in the domain, you modify the Network List Manager Policies.

Does this meet the goal?

- A. Yes
- B. No

Answer: B

QUESTION 46

In this section, you'll see one or more sets of questions with the same scenario and problem. Each question presents a unique solution to the problem, and you must determine whether the solution meets the stated goals. Any of the solutions might solve the problem. It is also possible that none of the solutions solve the problem.

Once you answer a question in this section, you will NOT be able to return to it. As a result, these questions will not appear in the review screen.

Note: This question is part of a series of questions that present the same scenario. Each question in the series contains a unique solution. Determine whether the solution meets the stated goals.

Your network contains an Active Directory domain named contoso.com. The domain contains a DNS server named Server1. All client computers run Windows 10. On Server1, you have the following zone configuration:

ZoneName	ZoneType	IsAutoCreated	IsDsIntegrated	IsReverseLookupZone	IsSign
_msdcs.contoso.com	Primary	False	True	False	False
adatum.com	Forwarder	False	False	False	False
contoso.com	Primary	False	True	False	False
fabrikam.com	Primary	False	False	False	True
TrustAnchors	Primary	False	True	False	False

You have the following subnets defined on Server1.

Name	IPv4Subnet	IPv6Subnet
Subnet1	{10.0.0.0/24}	
Subnet2	{10.0.1.0/24}	
Subnet3	{192.168.15.0/24}	
Subnet4	{172.16.1.0/24}	

You need to prevent Server1 from resolving queries from DNS clients located on Subnet4. Server1 must resolve queries from all other DNS clients.

Solution: From Windows PowerShell on Setver1, you run the Add-DnsServerTrustAnchor cmdlet. Does this meet the goal?

- A. Yes
- B. No

Answer: A

QUESTION 47

Note: This question is part of a series of questions that present the same scenario. Each question in the series contains a unique solution that might meet the stated goals. Some question sets might have more than one correct solution, while others might not have a correct solution.

You have a server named Server1 that runs Windows Server 2016. Server1 hosts a line-of-business application named App1. App1 has a memory leak that occasionally causes the application to consume an excessive amount of memory. You need to log an event in the Application event log whenever App1 consume more than 4 GB of memory.

Solution: You create a performance counter data collector.

Does this meet the goal?

- A. Yes
- B. No

Answer: A

QUESTION 48

You have an Active Director domain named Contoso.com. The domain contains servers named Server1, Server2 and Server3 that run Windows Server 2016. Server1 and Server2 are nodes in a Hyper V cluster named Cluster1. You add a Hyper V Replica Broker role named Broker 1 to Cluster1. Server3 is a Hyper-V server. A virtual machine named VM1 runs on Server3. Live Migration is enabled on all three servers and it is configured to use Kerberos authentication only. You need to ensure that you can perform the migration of VM1 to Server2. What should you do?

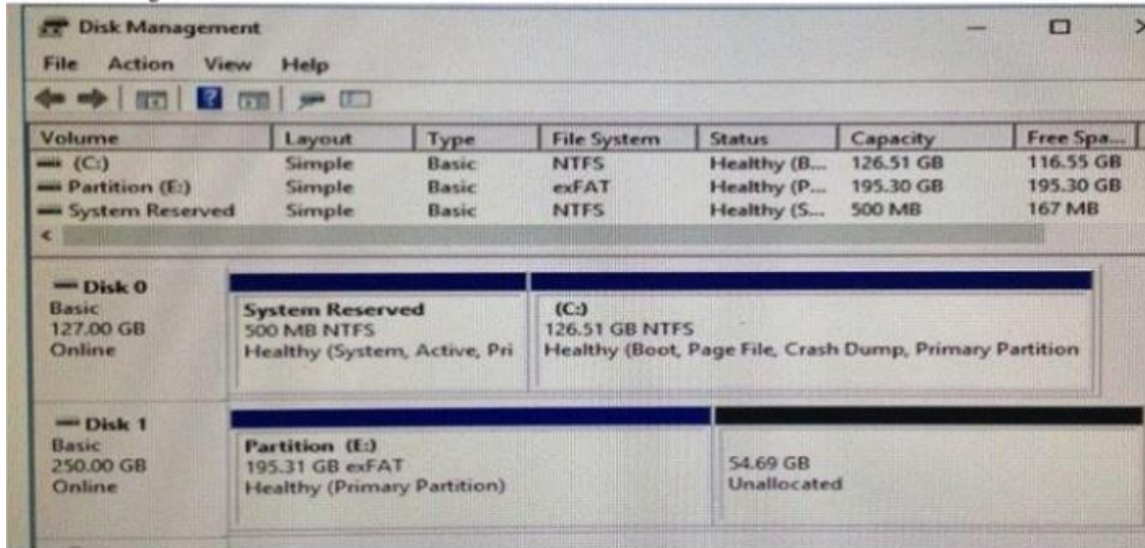
- A. Modify the Storage Migration settings on Server3.
- B. Modify the Cluster Permissions for Cluster1.
- C. Add the Server3 computer account to the Replicator group on Server1 and Server2.

D. Modify the Delegation settings for the Server3 computer account.

Answer: B

QUESTION 49

You have a server named Server 1 that runs Windows Server 2016. The disk configuration for Server 1 is shown in the exhibit:



You add Server1 to a cluster. You need to ensure that you can use Disk1 (or Storage Spaces Direct). What should you do first?

- A. Delete Partition (E:)
- B. Set Disk1 to offline
- C. Convert Disk 1 to a dynamic disk
- D. Convert Partition (E:) to ReFS

Answer: A

QUESTION 50

In this section, you'll see one or more sets of questions with the same scenario and problem. Each question presents a unique solution to the problem, and you must determine whether the solution meets the stated goals. Any of the solutions might solve the problem. It is also possible that none of the solutions solve the problem.

Once you answer a question in this section, you will NOT be able to return to it. As a result, these questions will not appear in the review screen.

Note: This question is part of a series of questions that present the same scenario. Each question in the series contains a unique solution. Determine whether the solution meets the stated goals.

Your network contains an Active Directory domain named contoso.com. The domain contains a DNS server named Server1. All client computers run Windows 10. On Server1, you have the following zone configuration:

ZoneName	ZoneType	IsAutoCreated	IsDsIntegrated	IsReverseLookupZone	IsSign
_msdcs.contoso.com	Primary	False	True	False	False
adatum.com	Forwarder	False	False	False	False
contoso.com	Primary	False	True	False	False
fabrikam.com	Primary	False	False	False	True
TrustAnchors	Primary	False	True	False	False

You have the following subnets defined on Server1.

Name	IPv4Subnet	IPv6Subnet
Subnet1	{10.0.0.0/24}	
Subnet2	{10.0.1.0/24}	
Subnet3	{192.168.15.0/24}	
Subnet4	{172.16.1.0/24}	

You need to prevent Server1 from resolving queries from DNS clients located on Subnet4. Server1 must resolve queries from all other DNS clients.

Solution: From a Group Policy object (GPO) in the domain, you modify the Network List Manager Policies (NLMP).

Does this meet the goal?

- A. Yes
- B. No

Answer: B

QUESTION 51

Your network contains an Active Directory forest named contoso.com. The forest contains a member server named Server1 that runs Windows Server 2016. Server1 is located in the perimeter network. You install the Active Directory Federation Services server role on Server1. You create an Active Directory Federation Services (ADFS) farm by using a certificate that has a subject name of sts.contoso.com. You need to enable certificate authentication from the Internet on Server1. Which two inbound TCP ports should you open on the firewall? Each correct answer presents part of the solution.

- A. 389
- B. 443
- C. 3389
- D. 8531
- E. 49443

Answer: BE

QUESTION 52

In this section, you'll see one or more sets of questions with the same scenario and problem. Each question presents a unique solution to the problem, and you must determine whether the solution meets the stated goals. Any of the solutions might solve the problem. It is also possible that none of the solutions solve the problem.

Once you answer a question in this section, you will NOT be able to return to it. As a result, these questions will not appear in the review screen.

Note: This question is part of a series of questions that present the same scenario. Each question in the series contains a unique solution. Determine whether the solution meets the stated goals.

Your network contains an Active Directory forest named contoso.com. The forest contains a

member server named Server1 that runs Windows Server 2016. All domain controllers run Windows Server 2012 R2. Contoso.com has the following configuration:

```
PS C:\> (Get-ADForest). ForestMode
Windows2008R2Forest

PS C:\> (Get-ADDomain). DomainMode
Windows2008R2Domain

PS C:\>
```

You plan to deploy an Active Directory Federation Services (AD FS) farm on Server1 and to configure device registration. You need to configure Active Directory to support the planned deployment.

Solution: You upgrade a domain controller to Windows Server 2016.

Does this meet the goal?

- A. Yes
- B. No

Answer: B

QUESTION 53

In this section, you'll see one or more sets of questions with the same scenario and problem. Each question presents a unique solution to the problem, and you must determine whether the solution meets the stated goals. Any of the solutions might solve the problem. It is also possible that none of the solutions solve the problem.

Once you answer a question in this section, you will NOT be able to return to it. As a result, these questions will not appear in the review screen.

Note: This question is part of a series of questions that present the same scenario. Each question in the series contains a unique solution. Determine whether the solution meets the stated goals.

Your network contains an Active Directory domain named contoso.com. The domain contains a DNS server named Server1. All client computers run Windows 10. On Server1, you have the following zone configuration:

ZoneName	ZoneType	IsAutoCreated	IsDnsIntegrated	IsReverseLookupZone	IsSign
_msdcs.contoso.com	Primary	False	True	False	False
adatum.com	Forwarder	False	False	False	False
contoso.com	Primary	False	True	False	False
fabrikam.com	Primary	False	False	False	True
TrustAnchors	Primary	False	True	False	False

You have the following subnets defined on Server1.

Name	IPv4Subnet	IPv6Subnet
Subnet1	{10.0.0.0/24}	
Subnet2	{10.0.1.0/24}	
Subnet3	{192.168.15.0/24}	
Subnet4	{172.16.1.0/24}	

You need to prevent Server1 from resolving queries from DNS clients located on Subnet4. Server1

must resolve queries from all other DNS clients.

Solution: From the Security setting of each zone on Server1, you modify the permissions.

Does this meet the goal?

- A. Yes
- B. No

Answer: B

QUESTION 54

Note: This question is part of a series of questions that present the same scenario. Each question in the series contains a unique solution that might meet the stated goals. Some question sets might have more than one correct solution, while others might not have a correct solution. After you answer a question in this section, you will NOT be able to return to it. As a result, these questions will not appear in the review screen.

You have two servers that run Windows Server 2016. You plan to create a Network Load Balancing (NLB) cluster that will contain both servers. You need to configure the network cards on the servers for the planned NLB configuration.

Solution: You configure the network cards to be on the same subnet and to have static IP addresses. You configure the cluster to use multicast.

Does this meet the goal?

- A. Yes
- B. No

Answer: B

QUESTION 55

Note: This question is part of a series of questions that use the same scenario. For your convenience, the scenario is repeated in each question. Each question presents a different goal and answer choices, but the text of the scenario is exactly the same in each question in this series.

Start of Repeated Scenario:

A company named Contoso, Ltd. has several servers that run Windows Server 2016. Contoso has a Hyper V environment that uses failover clustering and Windows Server Update Services (WSUS). The environment contains several Windows containers and several virtual machines. The WSUS deployment contains one upstream server that is located on the company's perimeter network and several downstream servers located on the internal network. A firewall separates the upstream server from the downstream servers. You plan to deploy a human resources application to a new server named HRServer5. HRServer5 contains a FAT32-formatted data volume. The CIO of Contoso identifies the following requirements for the company's IT department:

- Deploy failover cluster to two new virtual machines.
- Store all application databases by using Encrypted File System (EFS).
- Ensure that each Windows container has a dedicated IP address assigned by a DHCP server.
- Produce a report that lists the processor time used by all of the processes on a server named Server 1 for five hour.
- Encrypt all communication between the internal network and the perimeter network, including all WSUS communications.
- Automatically load balance the virtual machines hosted in the Hyper-V cluster when processor utilization exceeds 70 percent.

End of Repeated Scenario.

You need to modify the Hyper V cluster to meet the load balancing requirement for the virtual machine. Which command should you run?

- A. (Get-ClusterParameter) AutoBalancerMode=2
- B. (Get-Cluster).AutoBalancerMode=2
- C. (Get-ClusterParameter).AutoBalancerLevel=2
- D. (Get-Cluster).AutoBalancerLevel=2

Answer: C

QUESTION 56

Note: This question is part of a series of questions that use the same similar answer choices. An answer choice may be correct for more than one question in the series. Each question is independent of the other questions in this series. Information and details provided in a question apply only to that question.

You have a Hyper-V host named Server1 that runs Windows Server 2016 and a two-node scale-out file server cluster named Cluster1. A virtual machine named VM1 runs on Server1. You need to migrate the storage on VM1 to Cluster1. Which tool should you use?

- A. the clussvc.exe command
- B. the cluster.exe command
- C. the Computer Management console
- D. the configurehyperv.exe command
- E. the Disk Management console
- F. the Failover Cluster Manager console
- G. the Hyper-V Manager console
- H. the Server Manager Desktop app

Answer: G

QUESTION 57

You have a Hyper-V host named Served That runs Windows Server 2016. Server1 has a virtual machine named VM1. VM1 is configured to run the Docker daemon. On VM1 you have a container network that uses transparent mode. You need to ensure that containers that run on VM1 can obtain IP addresses from DHCP. What should you do?

- A. On VM1, rundocker network connect
- B. On Server1 runGet-VMNetworkAdapter-VMName VM1| Set-VMNetworkAdapter-MacAddressSpoofing On
- C. On Server1, rundocker network connect
- D. On VM1, runGet-VMNetworkAdapter-VMName VM1| Set-VMNetworkAdapter-MacAddressSpoofing On

Answer: D

QUESTION 58

In this section, you'll see one or more sets of questions with the same scenario and problem. Each question presents a unique solution to the problem, and you must determine whether the solution meets the stated goals. Any of the solutions might solve the problem. It is also possible that none of the solutions solve the problem.

Once you answer a question in this section, you will NOT be able to return to it. As a result, these questions will not appear in the review screen.

Note: This question is part of a series of questions that present the same scenario. Each question in the series contains a unique solution. Determine whether the solution meets the stated goals.

Your network contains an Active Directory domain named contoso.com. The domain contains a

DNS server named Server1. All client computers run Windows 10. On Server1, you have the following zone configuration:

ZoneName	ZoneType	IsAutoCreated	IsDsIntegrated	IsReverseLookupZone	IsSign
_msdcs.contoso.com	Primary	False	True	False	False
adatum.com	Forwarder	False	False	False	False
contoso.com	Primary	False	True	False	False
fabrikam.com	Primary	False	False	False	True
TrustAnchors	Primary	False	True	False	False

You have the following subnets defined on Server1.

Name	IPv4Subnet	IPv6Subnet
Subnet1	{10.0.0.0/24}	
Subnet2	{10.0.1.0/24}	
Subnet3	{192.168.15.0/24}	
Subnet4	{172.16.1.0/24}	

You need to prevent Server1 from resolving queries from DNS clients located on Subnet4. Server1 must resolve queries from all other DNS clients.

Solution: From Windows Firewall with Advanced Security on Server1, you create an inbound rule. Does this meet the goal?

- A. Yes
- B. No

Answer: A

QUESTION 59

You have a server that runs Windows Server 2016. The server contains a storage pool named Pool1. Pool1 contains five physical disks named Disk1, Disk2, Disk3, Disk4 and Disk5. A virtual disk named VirtualDisk1 is stored in Pool1. VirtualDisk1 uses the parity storage layout. Disk3 fails. You need to remove Disk3 from Pool1. Which two commands should you run? Each correct answer presents part of the solution.

- A. Update-StoragePool-FriendlyName Pool1
- B. Reset-PhysicalDisk-FriendlyName Disk3
- C. Set-PhysicalDisk-FriendlyName Disk3-Usage Retired
- D. Set-ResiliencySetting-StoragePool Pool1-PhysicalDiskRedundancyDefault 4
- E. Remove-PhysicalDisk-FriendlyName Disk3

Answer: C

QUESTION 60

You need to modify the GPO prefix by IPAM. What should you do?

- A. Run theSet-IpamConfiguration cmdlet
- B. Click Provision the IPAM serverin Server Manager
- C. Click Configure server discoveryin Server Manager
- D. Run theInvoke-IpamGpoProvisioning cmdlet

Answer: A

Section: (none)

QUESTION 61

Note: This question is part of a series of questions that use the same similar answer choices. An answer choice may be correct for more than one question in the series. Each question is independent of the other questions in this series. Information and details provided in a question apply only to that question.

You have three servers named Server1, Server2, Server3 that run Windows Server 2016. Server1 and Server2 have the Hyper-V server role installed. Server3 has the iSCSI Target Server role service installed:

Server name	Components installed
Server1	Hyper-V server role
Server2	Hyper-V server role
Server3	iSCSI Target Server role service

You need to create a Hyper-V cluster. Which tool should you use first?

- A. the clussvc.exe command
- B. the cluster.exe command
- C. the Computer Management console
- D. the configurehyperv.exe command
- E. the Disk Management console
- F. the Failover Cluster Manager console
- G. the Hyper-V Manager console
- H. the Server Manager Desktop app

Answer: H

QUESTION 62

You have a server named Server1 that runs Windows Server 2016. Server1 is a Hyper-V host that hosts a virtual machine named VM1. Server1 has three network adapter cards. That connect to a virtual switch named vSwitch1. You configure NIC Teaming on VM1 as shown in the exhibit:

New team

Team name: Converged NIC Team

Member adapters:

In Team	Adapter	Speed	State	Reason
<input type="checkbox"/>	Ethernet	1 Gbps		
<input checked="" type="checkbox"/>	Ethernet 2	1 Gbps		
<input checked="" type="checkbox"/>	Ethernet 3	1 Gbps		

Additional properties

Teaming mode: Switch Independent

Load balancing mode: Dynamic

Standby adapter: None (all adapters Active)

Primary team interface: Converged NIC Team: Default VLAN

OK Cancel

You need to ensure that VM1 will retain access to the network if a physical adapter card fails on Server1. What should you do?

- A. From Hyper-V Manager on Server1, modify the settings of VM1.
- B. From Windows PowerShell on Server1, run the Set-VmSwitchcmdlet.
- C. From the properties of the NIC team on VM1, add the adapter named Ethernet to the NIC team.
- D. From the properties of the NIC team on VM1, change the load balancing of the NIC team.

Answer: A

QUESTION 63

Note: This question is part of a series of questions that use the same similar answer choices. An answer choice may be correct for more than one question in the series. Each question is independent of the other questions in this series. Information and details provided in a question apply only to that question.

You have an Active Directory domain that contains two Hyper-V servers named Server1 and Server2. Server1 has Windows Server 2016 installed. Server2 has Windows Server 2012 R2 installed. Each Hyper-V server has three network cards. Each network card is connected to a different subnet. Server1 contains a dedicated migration network. Server2 contains a virtual machine named VM5. You plan to perform a live migration of VM5 to Server1. You need to ensure that Server1 uses all available networks to perform the live migration of VM5. What should you run?

- A. the Mount-VHD cmdlet

- B. the Diskpart command
- C. the Set-VHD cmdlet
- D. the Set-VM cmdlet
- E. the Set-VMHost cmdlet
- F. the Set-VMProcessor cmdlet
- G. the Install-WindowsFeature cmdlet
- H. the Optimize-VHD cmdlet

Answer: E

QUESTION 64

Note: This question is part of a series of questions that use the same scenario. For your convenience, the scenario is repeated in each question. Each question presents a different goal and answer choices, but the text of the scenario is exactly the same in each question in this series.

Start of Repeated Scenario:

A company named Contoso, Ltd. has several servers that run Windows Server 2016. Contoso has a Hyper V environment that uses failover clustering and Windows Server Update Services (WSUS). The environment contains several Windows containers and several virtual machines. The WSUS deployment contains one upstream server that is located on the company's perimeter network and several downstream servers located on the internal network. A firewall separates the upstream server from the downstream servers. You plan to deploy a human resources application to a new server named HRServer5. HRServer5 contains a FAT32-formatted data volume. The CIO of Contoso identifies the following requirements for the company's IT department:

- Deploy failover cluster to two new virtual machines.
- Store all application databases by using Encrypted File System (EFS).
- Ensure that each Windows container has a dedicated IP address assigned by a DHCP server.
- Produce a report that lists the processor time used by all of the processes on a server named Server 1 for five hours.
- Encrypt all communication between the internal network and the perimeter network, including all WSUS communications.
- Automatically load balance the virtual machines hosted in the Hyper-V cluster when processor utilization exceeds 70 percent.

End of Repeated Scenario.

What should you do to prepare the data volume on HRServer5 to store the databases required for the human resources application?

- A. Format the data volume by using ReFS.
- B. Enable Trusted Platform Module (TPM) on HRServer5.
- C. Format the data volume by using NTFS.
- D. Enable BitLocker Drive Encryption (BitLocker) on the data volume.

Answer: D

QUESTION 65

Drag and Drop Question

You have a physical server named Server1 that runs Windows Server 2016. Server1 is a Hyper-V host. On Server1, you create a virtual machine named VM1 that runs Windows Server 2016. You plan to install the Hyper-V server role on VM1. You need to ensure that you can configure VM1 to host virtual machines. How should you complete the Windows PowerShell script? To answer, drag the appropriate values to the correct targets. Each value may be used once, more than once, or not at all. You may need to drag the split bar between panes or scroll to view content.

Values

Set-VMProcessor -VMName VMHOST1 -ExposeVirtualizationExtensions -Count 2

Set-VMMemory VMHOST1 -DynamicMemoryEnabled

Get-VMNetworkAdapter -VMName VMHOST1 | Set-VMNetworkAdapter -MacAddressSpoofing on

Answer:

Values

Set-VMProcessor -VMName VMHOST1 -ExposeVirtualizationExtensions Count 2

Set-VMMemory VMHOST1 -DynamicMemoryEnabled

Get-VMNetworkAdapter -VMName VMHOST1 | Set-VMNetworkAdapter -MacAddressSpoofing on

QUESTION 66

Drag and Drop Question

You are planning the configuration of a virtual network switch for a Hyper V environment. The environment will contain the following Hyper V hosts:

- A server named Server1 will have 10 virtual machines that must be able to communicate with each other. The virtual machines must be prevented from communicating with Server1 and all other servers on the corporate network.
- A two-node failover cluster named Cluser1 will have 20 virtual machines. The virtual machines will run on both nodes. Hyper V hosts on the corporate network must be able to connect to the virtual machines.

Which type of virtual switch should you select for each Hyper V host? To answer, drag the appropriate virtual switch types to the correct hosts Each virtual switch type may be used once, more than once, or not at all.

Virtual Switch Types

Answer Area

10 virtual machines on Server1:

20 virtual machines on Cluster1:

Answer:

Virtual Switch Types

Answer Area

10 virtual machines on Server1:

20 virtual machines on Cluster1:

QUESTION 67

Hotspot Question

Your network contains an Active Directory forest. The forest contains one domain named

contoso.com. The domain contains two domain controllers named DC1 and DC2. DC1 holds all of the operations master roles. During normal network operations, you run the following commands on DC2:

```
Move-ADDirectoryServerOperationMasterRole -Identity "DC2" -  
OperationMasterRole PDCEmulator  
Move-ADDirectoryServerOperationMasterRole -Identity "DC2" -  
OperationMasterRole RIDMaster DC1 fails.
```

You remove DC1 from the network, and then you run the following command:

```
Move-ADDirectoryServerOperationMasterRole -Identity "DC2" -  
OperationMasterRole SchemaMaster
```

For each of the following statements, select Yes if the statement is true. Otherwise, select No.

Statements	Yes	No
DC2 holds the schema master operations role.	<input type="radio"/>	<input type="radio"/>
DC2 holds the PDC emulator master operations role.	<input type="radio"/>	<input type="radio"/>
Currently, you can add additional domains to the forest.	<input type="radio"/>	<input type="radio"/>

Answer:

Statements	Yes	No
DC2 holds the schema master operations role.	<input type="radio"/>	<input checked="" type="radio"/>
DC2 holds the PDC emulator master operations role.	<input checked="" type="radio"/>	<input type="radio"/>
Currently, you can add additional domains to the forest.	<input type="radio"/>	<input checked="" type="radio"/>

QUESTION 68

Drag and Drop Question

You have a network that contains several servers that run Windows Server 2016. You need to use

Desired State Configuration (DSC) to configure the servers to meet the following requirements:

- Install the Web Server server role
- Start the World Wide Web Publishing service

How should you configure the DSC resources? To answer, drag the appropriate values to the correct locations. Each value may be used once, more than once, or not at all. You may need to drag the split bar between panes or scroll to view content.

Values

Name	Present
Running	Service
Source	Stopped
WindowsFeature	WindowsProcess

Answer Area

```
Value WebServerRole
{
  Ensure = " Value "
  Name = "Web-Server"
}

Value WorldWideWebPublishing
{
  Name = "W3SVC"
  StartupType = "Automatic"
  State = " Value "
```

Answer:

Values

Name	Present
Running	Service
Source	Stopped
WindowsFeature	WindowsProcess

Answer Area

```
Service WebServerRole
{
  Ensure = " WindowsProcess "
  Name = "Web-Server"
}

Running WorldWideWebPublishing
{
  Name = "W3SVC"
  StartupType = "Automatic"
  State = " Source "
```

QUESTION 69

Hotspot Question

Note: This question is part of a series of questions that use the same scenario. For your convenience, the scenario is repeated in each question. Each question presents a different goal and answer choices, but the text of the scenario is exactly the same in each question in this series.

Start of Repeated Scenario:

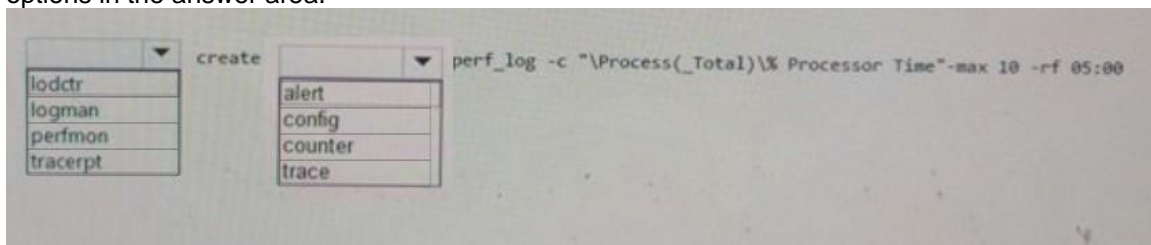
A company named Contoso, Ltd. has several servers that run Windows Server 2016. Contoso has a Hyper V environment that uses failover clustering and Windows Server Update Services (WSUS). The environment contains several Windows containers and several virtual machines. The WSUS deployment contains one upstream server that is located on the company's perimeter network and several downstream servers located on the internal network. A firewall separates the upstream server from the downstream servers. You plan to deploy a human resources application to a new server named HRServer5. HRServer5 contains a FAT32-formatted data volume. The CIO of

Contoso identifies the following requirements for the company's IT department:

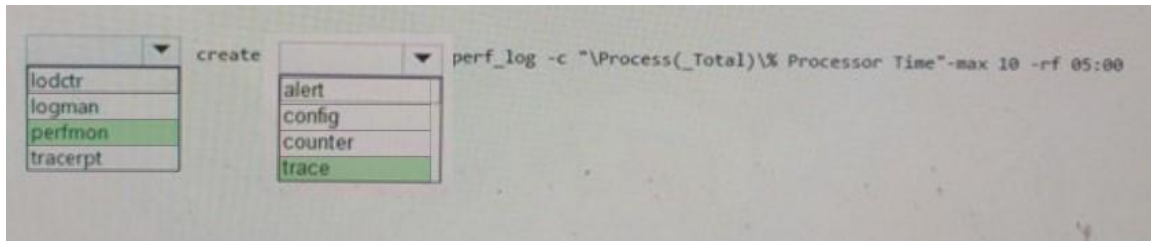
- Deploy failover cluster to two new virtual machines.
- Store all application databases by using Encrypted File System (EFS).
- Ensure that each Windows container has a dedicated IP address assigned by a DHCP server.
- Produce a report that lists the processor time used by all of the processes on a server named Server 1 for five hour.
- Encrypt all communication between the internal network and the perimeter network, including all WSUS communications.
- Automatically load balance the virtual machines hosted in the Hyper-V cluster when processor utilization exceeds 70 percent.

End of Repeated Scenario.

You need to create a Data Collector Set to meet the requirement for the processor time report. What command should you run to create the Data Collector Set? To answer, select the appropriate options in the answer area.



Answer:



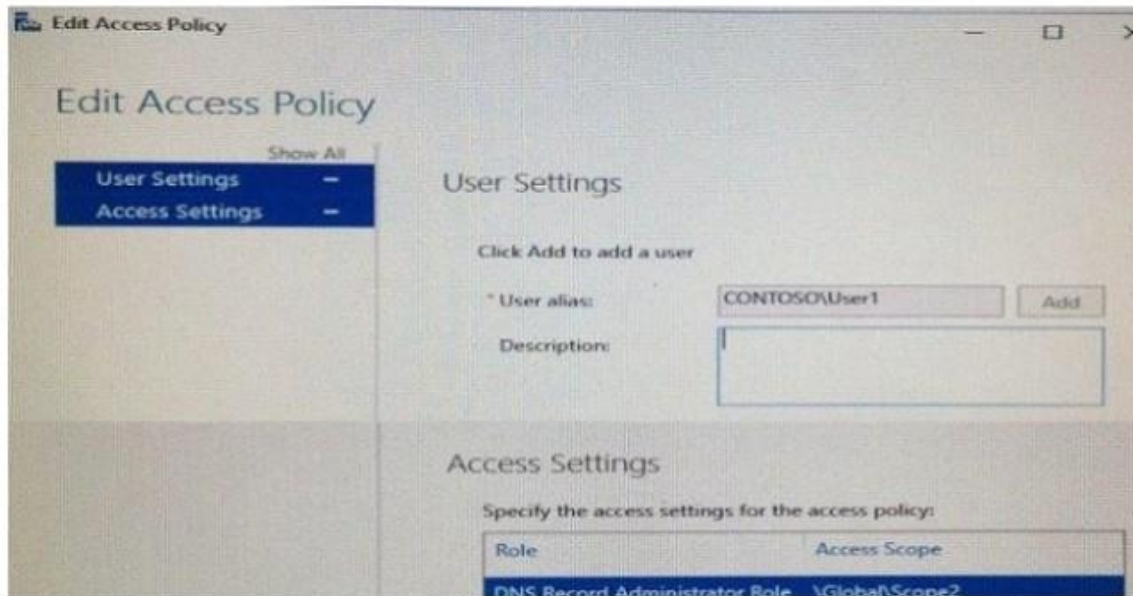
QUESTION 70

Hotspot Question

Your network contains an Active Directory domain named contoso.com. The domain contains a domain controller named Server1 and a member server named Server2. Server1 has the DNS Server role installed. Server2 has IP Address Management IPAM installed. The IPAM server retrieves zones from Server1 as shown in the following table:

Zone name	Dynamic update setting	Access scope
Adatum.com	Secure	\Global
Fabrikam.com	None	\Global\Scope1

The IPAM server has one access policy configured as shown in the exhibit.



For each of the following statements, select Yes, if the statement is true. Otherwise, select No.

Answer Area

Statements	Yes	No
User1 can add a host (A) record to adatum.com.	<input type="radio"/>	<input type="radio"/>
User1 can add a host (A) record to fabrikam.com.	<input type="radio"/>	<input type="radio"/>
User1 can delete the fabrikam.com zone.	<input type="radio"/>	<input type="radio"/>

Answer:

For each of the following statements, select Yes, if the statement is true. Otherwise, select No.

Answer Area

Statements	Yes	No
User1 can add a host (A) record to adatum.com.	<input type="radio"/>	<input checked="" type="radio"/>
User1 can add a host (A) record to fabrikam.com.	<input type="radio"/>	<input checked="" type="radio"/>
User1 can delete the fabrikam.com zone.	<input checked="" type="radio"/>	<input type="radio"/>

QUESTION 71

Drag and Drop Question

You have a server that runs Windows Server 2016. You install three additional physical disks named Disk1, Disk2, and Disk3. You plan to use these physical disks to store data. You need to create a volume to store data. The solution must prevent data loss in the event of a single disk failure. Which three actions should you perform in sequence? To answer, move the appropriate actions from the list of actions to the answer area and arrange them in the correct order.

Create a Virtual Disk.

Create a Storage Pool.

Create a new Storage Tier.

Create a Volume.

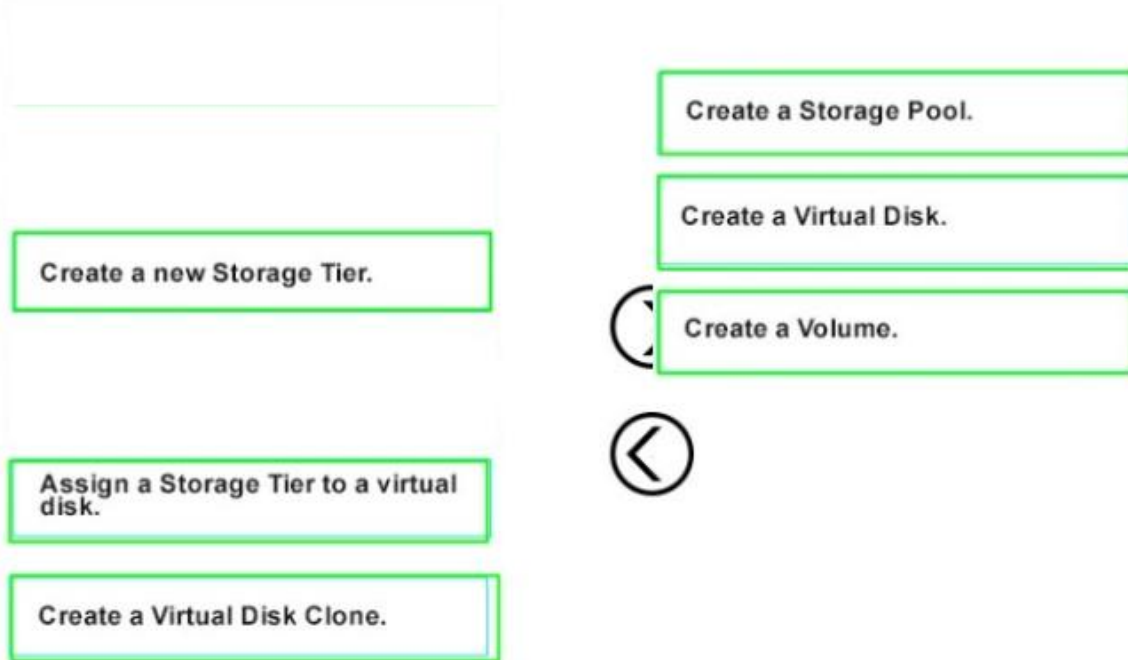
Assign a Storage Tier to a virtual disk.

Create a Virtual Disk Clone.

➤

➤

Answer:



QUESTION 72

Hotspot Question

Your network contains an Active Directory domain named contoso.com. The domain contains a DNS server named Server1. You enable Response Rate Limiting on Server1. You need to prevent Response Rate Limiting from applying to hosts that reside on the network of 10.0.0.0/24. Which cmdlets should you run? To answer, select the appropriate options in the answer area.

First cmdlet to run:

<input type="checkbox"/>	Add-DnsServerClientSubnet
<input type="checkbox"/>	Enable-DnsServerPolicy
<input type="checkbox"/>	Set-DnsServerResponseRateLimiting
<input type="checkbox"/>	Set-DnsServerResponseRateLimitingExceptionlist

Second cmdlet to run:

<input type="checkbox"/>	Add- DnsServerResponseRateLimitingExceptionlist
<input type="checkbox"/>	Add-DnsServerQueryResolutionPolicy
<input type="checkbox"/>	Add-DnsServerZoneScope
<input type="checkbox"/>	Set-DnsServerDsSetting

Answer:

First cmdlet to run:

	▼
Add-DnsServerClientSubnet	
Enable-DnsServerPolicy	
Set-DnsServerResponseRateLimiting	
Set-DnsServerResponseRateLimitingExceptionlist	

Second cmdlet to run:

	▼
Add-DnsServerResponseRateLimitingExceptionlist	
Add-DnsServerQueryResolutionPolicy	
Add-DnsServerZoneScope	
Set-DnsServerDsSetting	

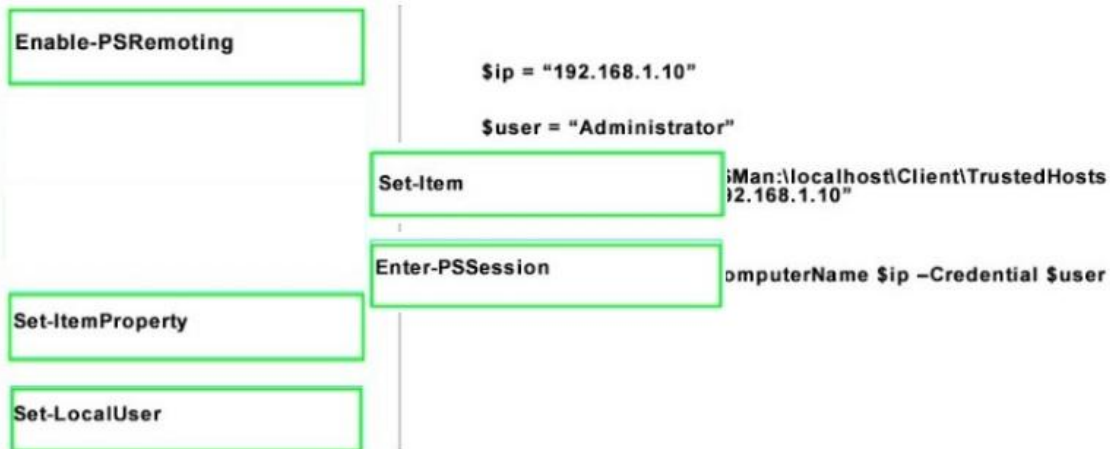
QUESTION 73

Drag and Drop Question

You install a new Nano Server named Nano1. Nano1 is a member of a workgroup and has an IP address of 192.168.1.10. You have a server named Server1 that runs Windows Server 2016. From Server1, you need to establish a Windows PowerShell session to Nano1. How should you complete the PowerShell script? To answer, drag the appropriate cmdlets to the correct targets. Each cmdlet may be used once, more than once, or not at all. You may need to drag the split bar between panes or scroll to view content.

Enable-PSRemoting	\$ip = "192.168.1.10"
Enter-PSSession	\$user = "Administrator"
Set-Item	<input type="text"/> WSMan:\localhost\Client\TrustedHosts
Set-ItemProperty	<input type="text"/> "192.168.1.10"
Set-LocalUser	<input type="text"/> -ComputerName \$ip -Credential \$user

Answer:



QUESTION 74

Hotspot Question

You have a machine named VM1 that runs Windows Server 2016. VM1 is a Remote Desktop Services (RDS) server. You need to ensure that only TCP port 3389 can be used to connect to VM1 over the network. Which command should you run on the Hyper-V host? To answer, select the appropriate options in the answer area.

<div style="text-align: right;">▼</div> Add-VmNetworkAdapterAcl Add-VmNetworkAdapterExtendedAcl Set-VmNetworkAdapter Set-VmNetworkAdapterRoutingDomain Mapping	-VMName VM1 -Direction	<div style="text-align: right;">▼</div> Inbound Outbound
--	------------------------	---

Answer:

<div style="text-align: right;">▼</div> Add-VmNetworkAdapterAcl Add-VmNetworkAdapterExtendedAcl Set-VmNetworkAdapter Set-VmNetworkAdapterRoutingDomain Mapping	-VMName VM1 -Direction	<div style="text-align: right;">▼</div> Inbound Outbound
---	------------------------	--

QUESTION 75

Hotspot Question

You implement a Windows Server 2016 failover cluster named cluster1 as a high available file server. You run the Get-Cluster cmdlet and receive the following output:

AddEvictDelay	: 60
AdministrativeAccessPoint	: Dns
AutoAssignNodeSite	: 0
AutoBalancerMode	: 2
AutoBalancerLevel	: 1
ClusSvcHangTimeout	: 135
ClusSvcRegroupStageTimeout	: 5
ClusSvcRegroupTickInMilliseconds	: 300
ClusterEnforcedAntiAffinity	: 0
ClusterFunctionalLevel	: 9
ClusterUpgradeVersion	: 7
ClusterGroupWaitDelay	: 120
ClusterLogLevel	: 3
ClusterLogSize	: 300
DatabaseReadwriteMode	: 0
DefaultNetworkRole	: 3
Description	:
Domain	: contoso.com
EnableSharedVolumes	: Enabled
FixQuorum	: 0
Id	: ec6121be-f816-426b-b550-72cafb943f1b
Name	: cluster1

Use the drop down menus to select the answer choice that completes each statement based on the information presented in the graphics.

You can perform Cluster-Aware Updating (CAU) in [answer choice].

You can use [answer choice] to create a file share in Cluster1.

self-updating mode only
remote-updating mode only
remote-updating mode and self-updating mode

DFS Management
Failover Cluster Manager
File Server Resource Manager
Server Manager

Answer:

You can perform Cluster-Aware Updating (CAU) in [answer choice].

You can use [answer choice] to create a file share in Cluster1.

self-updating mode only
remote-updating mode only
remote-updating mode and self-updating mode

DFS Management
Failover Cluster Manager
File Server Resource Manager
Server Manager

QUESTION 76

Hotspot Question

You have an Active Directory domain named Contoso.com. The domain contains Hyper-V hosts named Server1 and Server2 that run Windows Server 2016. The Hyper-V hosts are configured to use NVGRE for network virtualization. You have four virtual machines that are connected to an external switch. The virtual machines are configured as shown. To which virtual machine or virtual machines can VM1 and VM3 connect? To answer, select the appropriate options in the answer

area.

Virtual Machine Name	Hyper-V host	IP address	Netmask	GRE key
VM 1	Server1	192.168.1.16	255.255.255.0	16
VM 2	Server1	192.168.1.232	255.255.255.0	32
VM 3	Server2	192.168.1.32	255.255.255.0	32
VM 4	Server2	192.168.1.25	255.255.255.0	25
VM 5	Server2	192.168.1.116	255.255.255.0	16
VM 6	Server2	192.168.1.132	255.255.255.0	32

VM1 can connect to:

☐ VM2 only
☐ VM5 only
☐ VM2, VM3, VM5 and VM6 only
☐ VM2, VM3, VM4, VM5, and VM6

VM3 can connect to:

☐ VM6 only
☐ VM2, and VM6 only
☐ VM4, VM5 and VM6 only
☐ VM1, VM2, VM5, and VM6 only
☐ VM1, VM2, VM4, VM5, and VM6

Answer:

VM1 can connect to:

	▼
VM2 only	
VM5 only	
VM2, VM3, VM5 and VM6 only	
VM2, VM3, VM4, VM5, and VM6	

VM3 can connect to:

	▼
VM6 only	
VM2, and VM6 only	
VM4, VM5 and VM6 only	
VM1, VM2, VM5, and VM6 only	
VM1, VM2, VM4, VM5, and VM6	

QUESTION 77

Hotspot Question

You have a server named Server1 that runs Windows Server 2016. Server1 has the Web Application Proxy role service installed. You publish an application named App1 by using the Web Application Proxy. You need to change the URL that users use to connect to App1 when they work remotely. Which command should you run? To answer, select the appropriate options in the answer area.

	▼
Set-WebApplicationProxySslCertificate	
Set- WebApplicationProxyApplication	
Set- WebApplicationProxyConfiguration	

-ID 874A4543-7983-77A3-1E6D-1163E7419AC1

	▼
-ADFSUrl	
-BackendServerURL	
-ExternalURL	

https://SP.Contoso.com

Answer:

▼

Set-WebApplicationProxySslCertificate
Set- WebApplicationProxyApplication
Set- WebApplicationProxyConfiguration

-ID 874A4543-7983-77A3-1E6D-1163E7419AC1

▼

-ADFSUrl
-BackendServerURL
-ExternalURL

https://SP.Contoso.com

QUESTION 78

Hotspot Question

Your network contains an Active Directory domain named contoso.com. The domain contains a member server named Server1 that runs Windows Server 2016. You install IP Address Management (IPAM) on Server1. You select the automatic provisioning method, and then you specify a prefix of IPAM1. You need to configure the environment for automatic IPAM provisioning. Which cmdlet should you run? To answer, select the appropriate options in the answer area.

▼

Add-IpamDiscoveryDomain
Enable-IpamCapability
Invoke-IpamGpoProvisioning
Set-IpamConfiguration

-Domain "Contoso.com"

▼

-AssetTag
-DisciverDns
-GpoPrefixName
-ProvisioningMethod

"IPAM1"

Answer:

▼

Add-IpamDiscoveryDomain
Enable-IpamCapability
Invoke-IpamGpoProvisioning
Set-IpamConfiguration

-Domain "Contoso.com"

▼

-AssetTag
-DisciverDns
-GpoPrefixName
-ProvisioningMethod

"IPAM1"

QUESTION 79

Hotspot Question

Your network contains an Active Directory domain named contoso.com. The domain contains four servers named Server1, Server2, Server3, and Server4 that run Windows Server 2016. Server1 has IP Address Management (IPAM) installed Server2, Server3, and Server4 have the DHCP Server role installed IPAM manages Server2, Server3, and Server4. A domain user named User1 is a member of the groups shown in the following table.

Server name	Group
Server1	IPAM Users
Server2	DHCP Administrators
Server3	DHCP Users
Server4	Users

Which actions can User1 perform? To answer, select the appropriate options in the answer area.

Actions	Yes	No
Use the DHCP console on Server1 to create a DHCP scope on Server2.	<input type="radio"/>	<input type="radio"/>
Use the DHCP console on Server1 to create a DHCP scope on Server3.	<input type="radio"/>	<input type="radio"/>
Use the IPAM node of Server Manager on Server1 to create a DHCP scope on Server4.	<input type="radio"/>	<input type="radio"/>

Answer:

Actions	Yes	No
Use the DHCP console on Server1 to create a DHCP scope on Server2.	<input checked="" type="radio"/>	<input type="radio"/>
Use the DHCP console on Server1 to create a DHCP scope on Server3.	<input type="radio"/>	<input checked="" type="radio"/>
Use the IPAM node of Server Manager on Server1 to create a DHCP scope on Server4.	<input type="radio"/>	<input checked="" type="radio"/>

QUESTION 80

Drag and Drop Question

You have a server named Server1 that runs Windows Server 2016. You plan to deploy Internet Information Services (US) in a Windows container. You need to prepare Server1 for the planned deployment. Which three actions should you perform in sequence? To answer, move the appropriate actions from the list of actions to the answer area and arrange them in the correct order.

Actions	Answer Area
Install the Hyper-V server role.	1. <input type="text"/>
Install the Base Container Images.	2. <input type="text"/>
Install the Container feature.	3. <input type="text"/>
Install the Web Server role.	
Install Docker.	

Navigation icons: Right arrow, Left arrow, Up arrow, Down arrow.

Answer:

Actions	Answer Area
Install the Hyper-V server role.	1. Install the Container feature.
	2. Install Docker.
	3. Install the Base Container Images.
Install the Web Server role.	

Navigation icons: Right arrow, Left arrow, Up arrow, Down arrow.

QUESTION 81

Drag and Drop Question

You have a server named Server1 that runs Windows Server 2016. You need to deploy the first node cluster of a Network Controller cluster. Which four cmdlets should you run in sequence? To answer, move the appropriate cmdlets from the list of cmdlets to the answer area and arrange them in the correct order.

Actions	Answer Area
<div>Install-WindowsFeature</div>	1. <div></div>
<div>New-NetworkControllerNodeObject</div>	2. <div></div>
<div>Enable-NetworkControllerNode</div>	3. <div></div>
<div>Install-NetworkController</div>	4. <div></div>
<div>Install-NetworkControllerCluster</div>	

Answer:

Actions	Answer Area
<div></div>	<div>Install-WindowsFeature</div>
<div></div>	<div>New-NetworkControllerNodeObject</div>
<div>Enable-NetworkControllerNode</div>	<div>Install-NetworkControllerCluster</div>
<div></div>	<div>Install-NetworkController</div>

QUESTION 82

Hotspot Question

You have a Hyper-V host that runs Windows Server 2016. The Hyper-V host has a virtual machine named VM1. You have a VHD named VHD1.vhdx that has a generalized image of Windows Server 2016. You plan to create multiple virtual machines that will use the generalized image. You need

to create differencing disks based on VHD1 vhd. What command should you run? To answer, select the appropriate options in the answer area.

<input type="checkbox"/>	<input type="checkbox"/>
Add-VMHardDiskDrive	
New-VHD	
Set-VHD	
Set-VMHardDiskDrive	

-Path "C:\VHDs\VHD1Diff.VHDX"

<input type="checkbox"/>	<input type="checkbox"/>
-ParentPath	
-SourceDisk	

"C:\VHDs\VHD1.VHDX" -Differencing

Answer:

<input type="checkbox"/>	<input type="checkbox"/>
Add-VMHardDiskDrive	
New-VHD	
Set-VHD	
Set-VMHardDiskDrive	

-Path "C:\VHDs\VHD1Diff.VHDX"

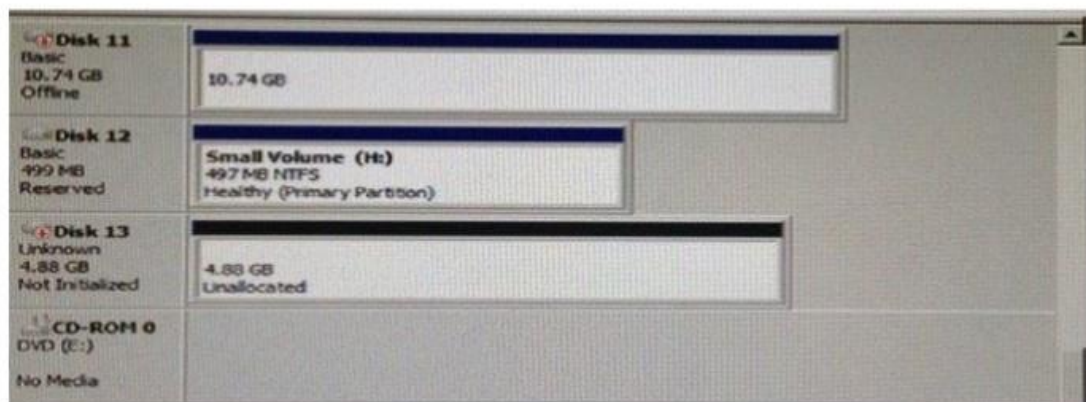
<input type="checkbox"/>	<input type="checkbox"/>
-ParentPath	
-SourceDisk	

"C:\VHDs\VHD1.VHDX" -Differencing

QUESTION 83

Hotspot Question

You have a server named Server1 that runs Windows Server 2016 and has the Hyper-V server role installed. You open Disk Management on Server1 as shown in the following graphic:



You plan to configure Disk13 as a pass-through disk for a generation 1 virtual machine. Use the drop-down menus to select the answer choice that completes each statement based on the information presented in the graphic.

The status of Disk 13 must be set to [answer choice.]

Initializing
Offline
Online

If the virtual machine uses Disk 13 as the system partition, Disk 13 must be attached to [answer choice] in Hyper-V Manager.

a Fibre Channel adapter
an IDE controller
a SCSI controller

Answer:

The status of Disk 13 must be set to [answer choice.]

Initializing
Offline
Online

If the virtual machine uses Disk 13 as the system partition, Disk 13 must be attached to [answer choice] in Hyper-V Manager.

a Fibre Channel adapter
an IDE controller
a SCSI controller

QUESTION 84

Drag and Drop Question

Your network contains two Hyper-V servers named Server1 and Serve2 has Windows Server 2012 R2 installed. Server2 has Windows Server 2016 installed. You perform a live migration of a virtual machine named VM1 from Server1 to Server2. You need to create a production checkpoint for VM1 on Server2. What three Windows PowerShell cmdlets should you run in sequence? To answer, move the appropriate Windows PowerSheild cmdlets from the list of actions to the answer.

Cmdlets	Answer Area
Set-VM	<div style="display: flex; align-items: center; justify-content: center;"> <div style="border: 1px solid black; width: 100px; height: 100px; margin: 5px;"></div> <div style="margin: 0 10px;"> <div style="border: 1px solid black; border-radius: 50%; width: 20px; height: 20px; display: flex; align-items: center; justify-content: center;">></div> <div style="border: 1px solid black; border-radius: 50%; width: 20px; height: 20px; display: flex; align-items: center; justify-content: center;"><</div> </div> </div>
Update-VMVersion	
Checkpoint-VM	
Set-VMHost	
Stop-VM	

Answer:

Cmdlets	Answer Area
Set-VM	Update-VMVersion
	Set-VMHost
	Checkpoint-VM
Stop-VM	

QUESTION 85

Hotspot Question

You have a server named Server 1 that runs Windows Server 2016 server. Server1 has the Docker daemon configured and has a container named Container1. You need to mount the folder C:\Folder1 on Server1 to C:\ContainerFolder in Container1. Which command should you run?

Copy-ContainerFile	Docker	Set-Service	-Name Container1 -Path	C:\Folder1 C:\ContainerFolder	Container1
			run -it -v	%windir%\ContainerFolder	Server1

Answer:

Copy-ContainerFile	Docker	Set-Service	-Name Container1 -Path	C:\Folder1 C:\ContainerFolder	Container1
			run -it -v	%windir%\ContainerFolder	Server1

QUESTION 86

Drag and Drop Question

You are deploying DirectAccess to a server named DA1. DA1 will be located behind a firewall and will have a single network adapter. The intermediary network will be IPv4. You need to configure firewall to support DirectAccess. Which firewall rules should you create for each type of traffic? To answer, drag the appropriate ports and protocols to the correct traffic types. Each port and protocol may be used once, more than once, or not at all. You may need to drag the split bar between panes or scroll to view content.

Ports and Protocols	Answer Area
IP protocol ID 1	Teredo traffic:
IP Protocol ID 41	6to4 traffic:
TCP 443	IP-HTTPS:
UDP 3544	

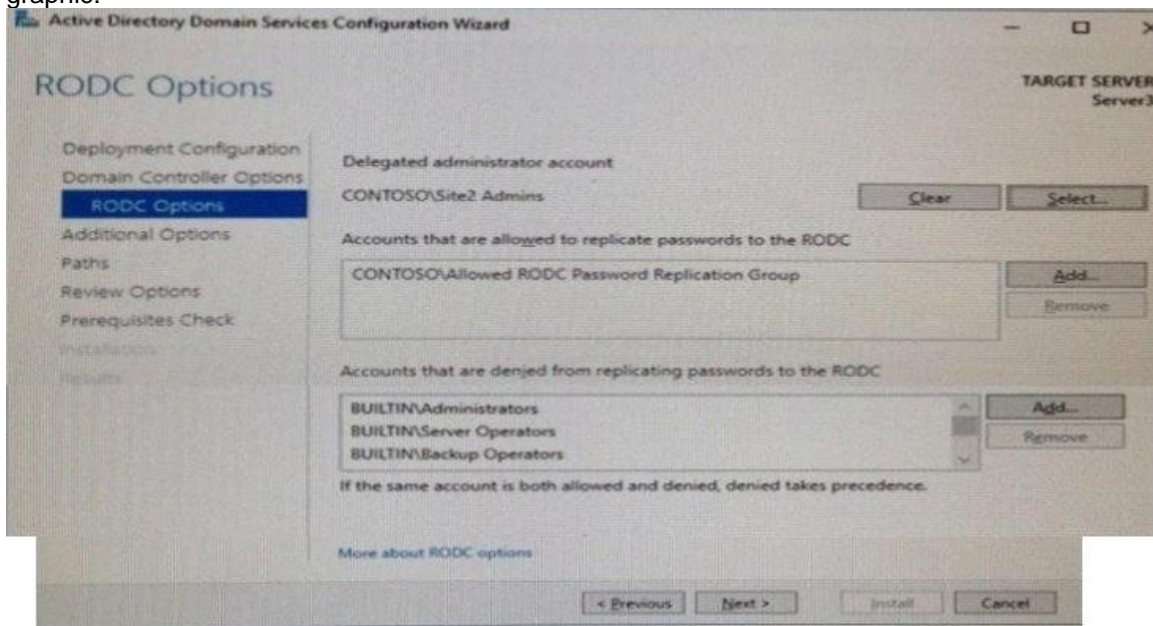
Answer:

Ports and Protocols	Answer Area
<input type="text"/>	Teredo traffic: <input type="text" value="UDP 3544"/>
<input type="text"/>	6to4 traffic: <input type="text" value="IP protocol ID 1"/>
<input type="text"/>	IP-HTTPS: <input type="text" value="TCP 443"/>

QUESTION 87

Hotspot Question

Your network contains an Active Directory forest. The forest contains two sites named Site1 and Site2. Site1 contains 10 domain controllers Site1 and Site2 connect to each other by using a WAN link. You run the Active Directory Domain Services Configuration Wizard as shown in the following graphic:



Server3 is the only server in Site2. Use the drop-down menus to select the answer choice that completes each statement based on the information graphic.

Members of the Site2 Admins group will be able to [answer choice] on Server 3.

make updates to SYSVOL content
manage the password replication policy
stop and start Active Directory Domain Services (AD DS)

If the WAN link fails, users who are members of the Allowed RODC Password Replication Group [answer choice] in Site2.

will be prevented from logging on
will log on with reduced security rights
can log on if they have previously logged on

Answer:

Members of the Site2 Admins group will be able to [answer choice] on Server 3.

<input type="checkbox"/>	make updates to SYSVOL content
<input type="checkbox"/>	manage the password replication policy
<input checked="" type="checkbox"/>	stop and start Active Directory Domain Services (AD DS)

If the WAN link fails, users who are members of the Allowed RODC Password Replication Group [answer choice] in Site2.

<input type="checkbox"/>	will be prevented from logging on
<input checked="" type="checkbox"/>	will log on with reduced security rights
<input type="checkbox"/>	can log on if they have previously logged on

QUESTION 88

Hotspot Question

Your network contains an Active Directory forest. The forest contains two domain controllers named DC1 and DC2 that run Windows Server 2016. DC1 holds all of the operations master roles. DC1 experiences a hardware failure. You plan to use an automated process that will create 1000 user accounts. You need to ensure that the automated process can complete successfully. Which command should you run? To answer, select the appropriate options in the answer area.

<input type="checkbox"/>	Move-ADDirectoryServerOperatinMasterRole ntdsutil
--------------------------	--

-identity "DC2" -OperationMasterRole

<input type="checkbox"/>	PDCemulator InfrastructureMaster RIDMaster SchemaMaster
--------------------------	--

<input type="checkbox"/>	Seize pdc -Force
--------------------------	---------------------

Answer:

<input checked="" type="checkbox"/>	Move-ADDirectoryServerOperatinMasterRole ntdsutil
-------------------------------------	--

-identity "DC2" -OperationMasterRole

<input type="checkbox"/>	PDCemulator InfrastructureMaster RIDMaster SchemaMaster
--------------------------	--

<input checked="" type="checkbox"/>	Seize pdc -Force
-------------------------------------	---------------------

QUESTION 89

Hotspot Question

Your network contains an Active Directory domain named contoso.com. The domain contains four servers named Server1, Server2, Server3, and Server4 that run Windows Server 2016. Server1 and Server2 are nodes in Hyper-V cluster named Cluster1. You have a highly available virtual machine named VM1. Server1 is the owner node of VM1. Server3 and Server4 are nodes of a scale-out file server named Cluster2. The storage on Server1 is configured as shown in the following table:

Location	Type
C:\ClusterStorage\Volume1	iSCSI Cluster Shared Volumes (CSV)
D:\	A locally attached disk
E:\	An iSCSI LUN
\\Cluster2\Share1	A file share on Cluster2

You need to move the virtual disk of VM1 to a different location. What should you do? To answer, select the appropriate options in the answer area.

Tool you should move the virtual disk of VM1:

Disk Management
 Failover Cluster Manager
 Hyper-V Manager
 Server Manager

Location to which you should move the virtual disk of VM1:

\\Cluster2\Share1
 D:\
 E:\

Answer:

Tool you should move the virtual disk of VM1:

Disk Management
 Failover Cluster Manager
 Hyper-V Manager
 Server Manager

Location to which you should move the virtual disk of VM1:

\\Cluster2\Share1
 D:\
 E:\

QUESTION 90

Hotspot Question

You have a server named Server1 that runs Windows Server 2016. Server1 is a Hyper-V host. You have two network adapter cards on Server1 that are Remote Direct Memory Access (RDMA) - capable. You need to aggregate the bandwidth of the network adapter cards for a virtual machine on Server1. The solution must ensure that the virtual machine can use the RDMA capabilities of the network adapter cards. Which command should you run first? To answer, select the appropriate

options in the answer area.

<input type="checkbox"/> -Name Production -NetAdapterName "NIC 1", "NIC 2" <input type="checkbox"/> Add-NetLbfoTeamNic <input type="checkbox"/> Add-VmNetworkAdapter <input type="checkbox"/> New-NetLbfoTeam <input type="checkbox"/> Add-VmSwitch	<input type="checkbox"/> \$true <input type="checkbox"/> -EnableEmbeddedTeaming <input type="checkbox"/> -EnableIov <input type="checkbox"/> -EnablePacketDirect
---	---

Answer:

<input type="checkbox"/> -Name Production -NetAdapterName "NIC 1", "NIC 2" <input type="checkbox"/> Add-NetLbfoTeamNic <input type="checkbox"/> Add-VmNetworkAdapter <input type="checkbox"/> New-NetLbfoTeam <input type="checkbox"/> Add-VmSwitch	<input type="checkbox"/> \$true <input type="checkbox"/> -EnableEmbeddedTeaming <input type="checkbox"/> -EnableIov <input type="checkbox"/> -EnablePacketDirect
---	---

QUESTION 91

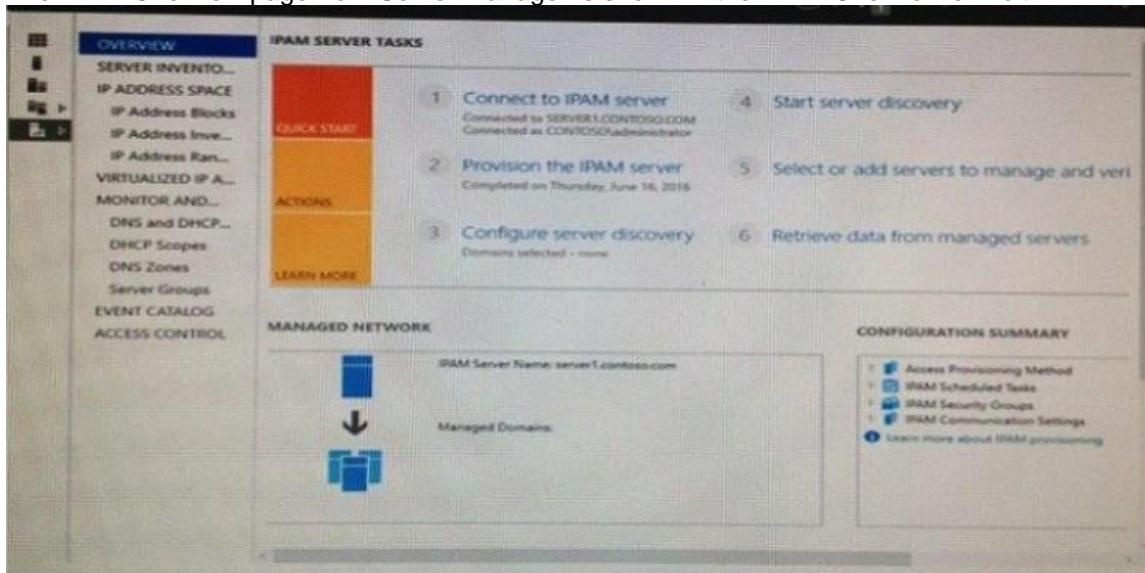
Hotspot Question

Your company has a testing environment that contains an Active Directory domain named contoso.com. The domain contains a server named Server1 that runs Windows Server 2016. Server1 has IP Address Management (IPAM) installed. IPAM has the following configuration.

```

Version           : 6.3.0.1
Port              : 4885
ProvisioningMethod : Automatic
GpoPrefix         : IPAM
HMACKey           : System.Security.SecureString
  
```

The IPAM Overview page from Server Manager is shown in the IPAM Overview exhibit:



The group policy configurations are shown in the GPO exhibit.



For each of the following statements, select Yes if the statement is true. Otherwise, select No.

Statements	Yes	No
If a DNS server is added to contoso.com, the server will be discovered by IPAM automatically.	<input type="radio"/>	<input type="radio"/>
If you manually add a DHCP server named Server3 to IPAM and set the Manageability status to Managed, the IPAM_DHCP Group Policy will apply to Server3.	<input type="radio"/>	<input type="radio"/>
If you click Start server discovery, the domain controllers in contoso.com will be discovered by IPAM.	<input type="radio"/>	<input type="radio"/>

Answer:

Statements	Yes	No
If a DNS server is added to contoso.com, the server will be discovered by IPAM automatically.	<input type="radio"/>	<input checked="" type="radio"/>
If you manually add a DHCP server named Server3 to IPAM and set the Manageability status to Managed, the IPAM_DHCP Group Policy will apply to Server3.	<input checked="" type="radio"/>	<input type="radio"/>
If you click Start server discovery, the domain controllers in contoso.com will be discovered by IPAM.	<input type="radio"/>	<input checked="" type="radio"/>

QUESTION 92

Hotspot Question

Your network contains an Active Directory domain named contoso.com. The domain contains a DNS server named Server1. Server1 configured to use a forwarder named server2.contoso.com that has an IP address of 10.0.0.10. You need to prevent Server1 from using root hints if the forwarder is unavailable. What command should you run? To answer, select the appropriate options in the answer area.

▼

Suspend-DnsServerZone

Set-DnsServer

Set-DnsServerForwarder

Set-DnsServerRootHint

▼

-Name "*" -PassThru

-IPAddress 10.0.0.10

-NameServer server2.contoso.com

-UseRootHints. \$false

Answer:

▼

Suspend-DnsServerZone

Set-DnsServer

Set-DnsServerForwarder

Set-DnsServerRootHint

▼

-Name "*" -PassThru

-IPAddress 10.0.0.10

-NameServer server2.contoso.com

-UseRootHints. \$false

QUESTION 93

Drag and Drop Question

Your network contains an Active Directory domain named contoso.com. The domain contains two servers named Server1 and Server2 that run Windows Server 2016. Server1 has IP Address Management (IPAM) installed. Server2 has Microsoft System Center 2016. Virtual Machine Manager (VMM) installed. You need to integrate IPAM and VMM. Which types of objects should you create on each server? To answer, drag the appropriate object types to the correct servers. Each object type may be used once, more than once, or not at all. You may need to drag the split bar between panes or scroll to view content.

Access policy	Network Service	Server1: Object	
Run As Account	Service Template	Server2: Object	Object
User Role			

Answer:

		Server1: Access policy	
	Service Template	Server2: Run As Account	Network Service
User Role			

QUESTION 94

Hotspot Question

Your network contains an Active Directory forest named contoso.com. The forest contains an Active Directory Federation Services (AD FS) farm. You install Windows Server 2016 on a server named Server2. You need to configure Server2 as a node in the federation server farm. Which cmdlets should you run? To answer, select the appropriate options in the answer area.

First cmdlet to run:

▼

Install-AdfsFarm

Install-Package

Install-WindowsFeature

Second cmdlet to run:

▼

Install-AdfsFarm

New-AdfsOrganization

Set-AdfsFarmInformation

Set-AdfsProperties

Answer:

First cmdlet to run:

	▼
Install-AdfsFarm	
Install-Package	
Install-WindowsFeature	

Second cmdlet to run:

	▼
Install-AdfsFarm	
New-AdfsOrganization	
Set-AdfsFarmInformation	
Set-AdfsProperties	

QUESTION 95

Hotspot Question

You have a server named Server1 that runs Windows Server 2016. Server1 has the Windows Application proxy role service installed. You plan to deploy Remote Desktop Gateway (RD Gateway) services. Clients will connect to the RD Gateway services by using various types of devices including: Windows, iOS and Android devices. You need to publish the RD Gateway services through the Web Application Proxy. Which command should you run? To answer, select the appropriate options in the answer area.

	▼	
Add-WebApplicationProxyApplication		-BackendServerURL 'https://rdg.contoso.com/rdg1/'
Set-WebApplicationProxyApplication		-ExternalCertificateThumbprint
Set-WebApplicationProxyConfiguration		'1a2b3c4d5e6f1a2b3c4d5e6f1a2b3c4d5e6f1a2b'
		-ExternalURL 'https://rdg.contoso.com/rdg1'
		-Name 'RDG1'
-ExternalPreAuthentication		-ADFSRelyingPartyName 'Default provider'
	▼	
	ADFS	
	ADFSforOAuth	
	ClientCertificate	
	PassThrough	
-BackendServerAuthenticationSPN 'HTTP/RDG1'		

Answer:

Add-WebApplicationProxyApplication
Set-WebApplicationProxyApplication
Set-WebApplicationProxyConfiguration

-BackendServerURL 'https://rdg.contoso.com/rdg1/'
-ExternalCertificateThumbprint
'1a2b3c4d5e6f1a2b3c4d5e6f1a2b3c4d5e6f1a2b'
-ExternalURL 'https://rdg.contoso.com/rdg1/'
-Name 'RDG1'

-ExternalPreAuthentication

ADFS
ADFSforOAuth
ClientCertificate
PassThrough

☒

-ADFSRelyingPartyName 'Default provider'

-BackendServerAuthenticationSPN 'HTTP/RDG1'

QUESTION 96

Hotspot Question

You have a server that runs Windows Server 2016. You run the commands shown in the following output: PS G:\> Get-DedupVolume | ft.

```

Volume           : G:
VolumeId          : \\?\Volume{2efa2f6e-db4a-4bb1-aa15-31ae8b073d16}\
Enabled           : True
UsageType         : Default
DataAccessEnabled : True
Capacity          : 923.87 GB
FreeSpace         : 393.98 GB
UsedSpace         : 529.89 GB
UnoptimizedSize   : 1008.7 GB
SavedSpace        : 478.82 GB
SavingsRate       : 47 %
MinimumFileAgeDays : 3
MinimumFileSize   : 32768
NoCompress        : False
ExcludeFolder     :
ExcludeFileType   :
ExcludeFileTypeDefault : {edb, jrs}
NoCompressionFileType : {asf, mov, wma, wmv...}
ChunkRedundancyThreshold : 100
Verify            : False
OptimizeInUseFiles : False
OptimizePartialFiles : False

PS G:\> Get-Date
Tuesday, June 21, 2016 5:29:58 PM

PS G:\DC01> dir | select Mode,LastWriteTime,Length,Name | ft -AutoSize

Mode LastWriteTime          Length Name
----
d---- 2/18/2015 11:54:56 AM          Snapshots
d---- 2/18/2015 12:11:42 PM          Virtual Machines
-a--- 6/21/2016 5:27:40 PM 51539608064 DC01.vhd
-a--- 6/18/2016 7:00:00 AM 12400  Readme.txt
-a--- 1/5/2015 7:00:00 AM 3939235840 Software.iso
  
```

For each of the following statements, select Yes if the statement is true. Otherwise, select No.

Statements	Yes	No
DC01.vhd will be processed by deduplication	<input type="radio"/>	<input type="radio"/>
Readme.txt will be processed by deduplication.	<input type="radio"/>	<input type="radio"/>
Software.iso will be processed by deduplication.	<input type="radio"/>	<input type="radio"/>

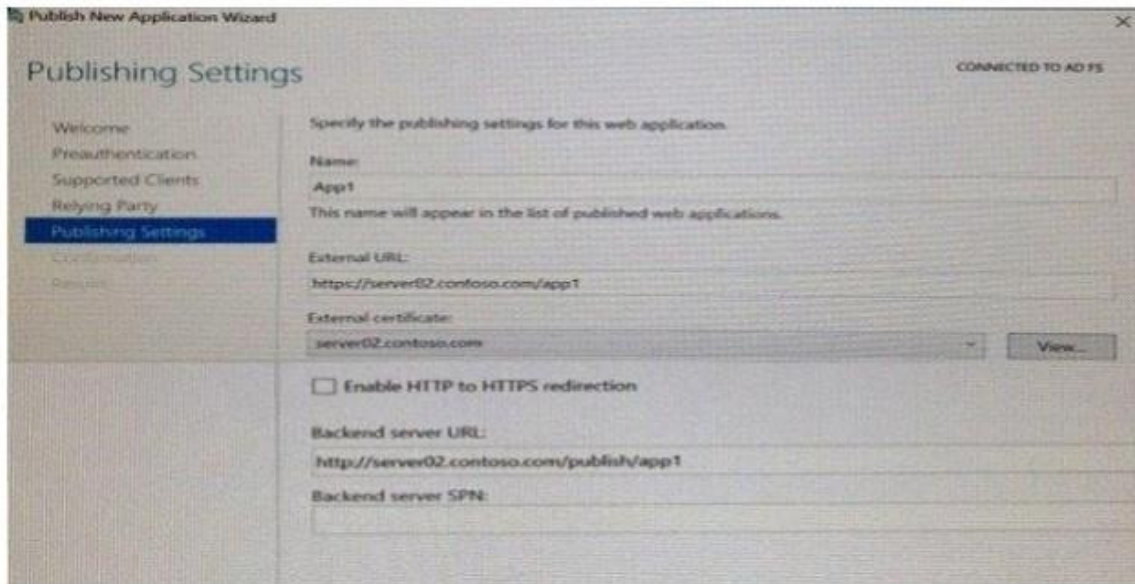
Answer:

Statements	Yes	No
DC01.vhd will be processed by deduplication	<input checked="" type="radio"/>	<input type="radio"/>
Readme.txt will be processed by deduplication.	<input type="radio"/>	<input checked="" type="radio"/>
Software.iso will be processed by deduplication.	<input checked="" type="radio"/>	<input type="radio"/>

QUESTION 97

Hotspot Question

You have a server named Served that runs Windows Server 2016. Server1 has the Windows Application Proxy role service installed. You are publishing an application named App1 that will use Integrated. Windows authentication as shown in the following graphic:



Use the drop-down menus to select the answer choice that completes each statement based on the information presented in the graphic.

Before you can complete the wizard, you must [answer choice]

	▼
change the external certificate	
configure the Backend server SPN	
select Enable HTTP to HTTPS redirection	

To ensure that users can access App1 externally, you must change the External URL to [answer choice.]

	▼
https://app1.contoso.com/app1	
https://server02.contoso.com/app1	
https://server02.contoso.com/publish/app1	

Answer:

Before you can complete the wizard, you must [answer choice]

	▼
change the external certificate	
configure the Backend server SPN	
select Enable HTTP to HTTPS redirection	

To ensure that users can access App1 externally, you must change the External URL to [answer choice.]

	▼
https://app1.contoso.com/app1	
https://server02.contoso.com/app1	
https://server02.contoso.com/publish/app1	

QUESTION 98

Drag and Drop Question

Note: This question is part of a series of questions that use the same scenario. For your convenience, the scenario is repeated in each question. Each question presents a different goal and answer choices, but the text of the scenario is exactly the same in each question in this series.

Start of Repeated Scenario:

Your network contains an Active Directory domain named contoso.com. The functional level of the forest and the domain is Windows Server 2008 R2. All servers in the domain run Windows Server 2016 Standard. The domain contains 300 client computers that run either Windows 8.1 or Windows 10. The domain contains nine servers that are configured as shown in the following table:

name	Configuration	Planned changes
Server1	Domain controller	None
Server2	File server	Run Failover Clustering and Storage Spaces
Server3	File server	Direct
Server4	Hyper-V host	Run Failover Clustering and Storage Spaces
Server5	Hyper-V host	Direct
Server6	Member server	Run shielded virtual machines
VM1	Virtual machine hosted on Server 5	None
VM2	Virtual machine hosted on Server 5	None
VM3	Virtual machine hosted on Server 5	None

The virtual machines are configured as follows:

- Each virtual machine has one virtual network adapter.
- VM1 and VM2 are part of a Network Load Balancing (NLB) cluster.
- All of the servers on the network can communicate with all of the virtual machines.

End of repeated Scenario.

You need to install the correct edition of Windows Server 2016 to support the planned changes for Server2, Server3, Server4 and Server6. Which edition or editions should you choose for each server? To answer, drag the appropriate editions to the correct servers.

Editions	Answer Area
Standard only	Server2: Edition
Datacenter only	Server3: Edition
Standard or Datacenter	Server4: Edition
	Server6: Edition

Answer:

Editions	Answer Area
Standard only	Server2: Standard only
Datacenter only	Server3: Standard or Datacenter
Standard or Datacenter	Server4: Standard only
	Server6: Datacenter only

QUESTION 99

Your manager has asked you to configure the company Windows Server 2016 domain controller.

He wants all new computer accounts to be placed in the General OU, when computers join the domain. Which command should you use to accomplish this?

- A. Dsmove
- B. Netdom
- C. Redircmp
- D. None of these

Answer: A

QUESTION 100

You want to capture the state, data, and hardware configuration of a running virtual machine. Which checkpoint can be very useful if you need to recreate a specific state or condition of a running virtual machine so that you can troubleshoot a problem?

- A. Production
- B. Standard

Answer: B

Explanation:

Standard checkpoints capture the state, data, and hardware configuration of a running virtual machine and are intended for use in development and test scenarios.

QUESTION 101

Which container type is described below that provides application isolation through process and namespace isolation technology? And, this container shares a kernel with the container host and all containers running on the host.

- A. Hyper-V Container
- B. Windows Server Container

Answer: B

QUESTION 102

Your IT company is constantly changing, with new users coming and going throughout the year. One of your common tasks requires the deletion of user accounts for employees who have left the company. Which command can be used to delete user accounts?

- A. LDIFDE
- B. Dsmod
- C. Dspromo
- D. Netsh

Answer: A

QUESTION 103

One of your team previously opened Hyper-V Manager, selected a virtual machine and followed the Enable Replication wizard. The process was completed successfully and replications were occurring as expected. Several weeks later and you now want to run a planned failover. Which of the following steps is the correct starting point?

- A. Right-click the primary vM and select Replication > Planned Failover

- B. Right-click the replica vM and select Replication > Planned Failover
- C. Right-click the primary VM and select Replication > Extend Replication
- D. Right-click the replica VM and select Replication > Test Failover

Answer: A

QUESTION 104

You have just finished installing Windows Server 2016 on a new server. Your colleague has informed you that its essential that you must activate Windows Server. Which of the following command line tools can be used to Activate Windows Server?

- A. Netdom C:\windows\system32\slmgr.vbs -ato
- B. Netsh C:\windows\system32\slmgr.vbs -ato
- C. Ocsetup C:\windows\system32\slmgr.vbs -ato
- D. Cscript C:\windows\system32\slmgr.vbs -ato

Answer: D

QUESTION 105

With Nano Server some packages are installed directly with their own Windows PowerShell switches (such as -Compute); others you install by passing package names to the -Packages parameter, which you can combine in a comma-separated list. You want to add IIS to your Nano Server, which command should you use?

- A. -Compute
- B. -Packages
- C. -Containers
- D. -Storage

Answer: B

Explanation:

IIS is added by using -Packages Microsoft-NanoServer-IIS-Package.

QUESTION 106

In response to increased needs for higher density and more efficient OS resource utilization, Nano Server is foundational to the modern datacenter and is useful in two core scenarios: As a private cloud infrastructure it's particularly useful for clustered Hyper-V, clustered storage and core networking services scenarios; or as an application platform it's highly optimized for modern distributed and cloud-based apps which leverage containers and micro service architectures. Is the following statement TRUE or FALSE? A local interface with UI support is available for offline management of Nano Servers?

- A. TRUE
- B. FALSE

Answer: A

QUESTION 107

The Host Guardian Service supports two different deployments of a Guarded fabric (attestation modes). The statement below describes which mode? Guarded hosts that can run Shielded VMs are approved based on their identity, measured boot sequence and code integrity policies so that you can ensure that these hosts are only running approved code.

- A. Admin-trusted attestation
- B. TPM-trusted attestation

Answer: B

Explanation:

TPM-trusted attestation offers the strongest possible protections but also requires more configuration steps. Host hardware and firmware must include TPM 2.0 and UEFI 2.3.1 with secure boot enabled. TPM trusted attestation is the mode Microsoft recommend that you use because it offers stronger assurances but it requires that your Hyper-V hosts have TPM 2.0.

QUESTION 108

Virtual Network Manager (available from the Hyper-V Manager snap-in) offers three types of virtual networks that you can use to define various networking topologies for virtual machines and the virtualization server. Which type of virtual network is isolated from all external network traffic on the virtualization server, as well any network traffic between the management operating system and the external network?

- A. Private virtual network
- B. Internal virtual network

Answer: A

QUESTION 109

You have decided to install Windows Server 2016 by choosing the Service Core Installation option. If you want to install, configure or uninstall server roles remotely, what tool would you use?

- A. Any of these
- B. Windows PowerShell
- C. Remote Server Administration Tools (RSAT)
- D. Server Manager

Answer: A

QUESTION 110

When you create a new SET team, you must configure the following team properties: Member adapters and Load balancing mode. Which Load balancing mode ensures that outbound loads are distributed based on a hash of the TCP Ports and IP addresses. This mode also re-balances loads in real time so that a given outbound flow can move back and forth between SET team members.

- A. Dynamic
- B. Hyper-V Port

Answer: A

QUESTION 111

For Windows Server 2016, Nano Server is distributed on the physical media, where you will find a NanoServer folder; this contains a .wim image and a subfolder called Packages. It is these package files that you use to add server roles and features to the VHD image, which you then boot to. Assume that several variables have been configured already, which PowerShell command would you use to create a Nano Server which had the Hyper-V role, clustering, OEM Drivers and antimalware?

- A. New-NanoServerImage -MediaPath \$mediapath -BasePath \$basepath -TargetPath \$targetpath -

[70-740 Exam Dumps](#) [70-740 Exam Questions](#) [70-740 PDF Dumps](#) [70-740 VCE Dumps](#)

[Back to the Source of this PDF & Get More Free Braindumps -- www.microsoftbraindumps.com](#)

- ComputerName \$computername -OEMDrivers -Clustering -Defender -Compute
- B. New-NanoServerImage -MediaPath \$mediapath -BasePath \$basepath -TargetPath \$targetpath -
ComputerName \$computername -OEMDrivers -Clustering -Storage - EnableRemoteManagementPort
- C. New-NanoServerImage -MediaPath \$mediapath -BasePath \$basepath -TargetPath \$targetpath -
ComputerName \$computername -OEMDrivers -Defender -Containers - EnableRemoteManagementPort
- D. New-NanoServerImage -MediaPath \$mediapath -BasePath \$basepath -TargetPath \$targetpath -
ComputerName \$computername -Defender -Storage -Compute - EnableRemoteManagementPort

Answer: A

QUESTION 112

You want to boot a Linux Operating System with the Secure Boot option enabled in a virtual machine. This will be the first time you boot the OS. What must you do?

- A. Set the -BootOrder to HardDiskDrive
- B. Configure the virtual machine to use the Microsoft UEFI Certificate Authority
- C. You can't enable Secure Boot with Linux
- D. Set -EnableSecureBoot without specifying a template

Answer: B

Explanation:

Linux operating systems running on newer generation virtual machines can boot with the Secure Boot option enabled. Before you boot the virtual machine for the first time, you must configure the virtual machine to use the Microsoft UEFI Certificate Authority. You can do this from Hyper-V Manager, Virtual Machine Manager, or an elevated Windows Powershell session.

QUESTION 113

Time synchronization is critical for the proper operation of many Windows services and line-of-business applications. The ____ uses the Network Time Protocol (NTP) to synchronize computer clocks on the network so that an accurate clock value, or time stamp, can be assigned to network validation requests and resource access requests.

- A. Network Services Shell (Netsh)
- B. Listsvc
- C. Fixmbr
- D. Windows Time service (W32time)

Answer: D

QUESTION 114

.....

NEW QUESTION 197

You have a server named Server1 that runs Windows Server 2016. On Server1, you use the Basic template to create a new Data Collector Set named CollectorSet1. You need to configure CollectorSet1 to generate performance alerts. What should you do before you start CollectorSet1?

- A. Modify the performance counter data collector of CollectorSet1.
- B. Add a new data collector to CollectorSet1.
- C. Modify the configuration data collector of CollectorSet1.
- D. Add a new task to CollectorSet1.

Answer: A

NEW QUESTION 198

You plan to install a Nano Server on a physical server named Nano1. Nano1 will host several virtual machines that will use live migration. Which package should you install on Nano1?

- A. Microsoft-NanoServer-SecureStartup-Package
- B. Microsoft-NanoServer-ShieldedVM-Package
- C. Microsoft-NanoServer-Compute-Package
- D. Microsoft-NanoServer-FailoverCluster-Package
- E. Microsoft-NanoServer-Storage-Package

Answer: C

NEW QUESTION 199

You have two servers named Server1 and Server 2 that run Windows Server 2016. You plan to implement Storage Replica to replicate the contents of volumes on Server1 and Server2. You need to ensure that the replication traffic between the servers is limited to a maximum of 100 Mbps. Which cmdlet should you run?

- A. Set-NetworkController
- B. Set-NetUDPSetting
- C. Set-NetQosPolicy
- D. Set-NetTCPSetting

Answer: C

Explanation:

[https://technet.microsoft.com/en-us/library/hh967471\(v=wps.630\).aspx](https://technet.microsoft.com/en-us/library/hh967471(v=wps.630).aspx)

NEW QUESTION 200

You have a server named Server1 that runs Windows Server 2016. Server1 has the Containers feature installed. You create a text file that contains the commands that will be used to automate the creation of new containers. You need to ensure that the commands in the text file are used when you create new containers. What should you name the file?

- A. Bootstrap.ini
- B. Config.ini
- C. Dockerfile
- D. Unattend.txt

Answer: C

Explanation:

<https://www.digitalocean.com/community/tutorials/docker-explained-using-dockerfiles-to-automate-building-of-images>

NEW QUESTION 201

You have Hyper-V virtual machines that run 50 web servers, 10 Microsoft SQL Server servers, 10 files servers, and 8 domain controllers. You need to implement a backup strategy that meets the following requirements:

- Backs up all servers
- Centralizes application-level backups
- Performs application-level backups
- Provides the ability to perform bare metal recovery

[70-740 Exam Dumps](#) [70-740 Exam Questions](#) [70-740 PDF Dumps](#) [70-740 VCE Dumps](#)

[Back to the Source of this PDF & Get More Free Braindumps -- www.microsoftbraindumps.com](#)

What should you use?

- A. Microsoft Azure VM Backup
- B. Microsoft Azure Backup Agent
- C. Windows Server Backup
- D. Microsoft Azure Backup Server

Answer: D

Explanation:

<https://docs.microsoft.com/en-us/azure/backup/backup-introduction-to-azure-backup>

NEW QUESTION 202

You create a Storage Spaces Direct hyper-converged failover cluster. The cluster contains three nodes and a 1 TB Storage Spaces Direct volume. The cluster will store virtual machines. You plan to extend the volume by adding an additional 3 TB. What is the minimum amount of extra disk capacity required to accommodate extending the volume?

- A. 3 TB on the coordinator node
- B. 3 TB per node
- C. 4 TB per node
- D. 4 TB on the coordinator node

Answer: A

Explanation:

<https://docs.microsoft.com/en-us/windows-server/storage/storage-spaces/resize-volumes>

NEW QUESTION 203

You have a Hyper-V failover cluster that contains three nodes. Virtual machines are distributed evenly across the cluster nodes. You need to ensure that if a node loses connectivity from the other nodes, the virtual machines on the node will be transitioned to one of the remaining nodes after one minute. Which settings should you modify?

- A. QuaranteneDuration and QuarantineThreshold
- B. SameSubnetDelay and CrossSubnetDelay
- C. QuorumArbitrationTimeMax and RequestReplyTimeout
- D. ResiliencyPeriod and ResiliencyLevel

Answer: C

Explanation:

[https://msdn.microsoft.com/en-us/library/aa369123\(v=vs.85\).aspx](https://msdn.microsoft.com/en-us/library/aa369123(v=vs.85).aspx)

[https://msdn.microsoft.com/en-us/library/bb394696\(v=vs.85\).aspx](https://msdn.microsoft.com/en-us/library/bb394696(v=vs.85).aspx)

NEW QUESTION 204

Hotspot

You have a Hyper-V host named Server1 that runs Windows Server 2016. You deploy a virtual machine named VM1 to Server1. VM1 runs Windows Server 2016. You need to ensure that you can install the Hyper-V server role on VM1. Which command should you run?

Answer Area

<div>▼</div> <div>Enable-VMIntegrationService</div> <div>Set-VM</div> <div>Set-VMBios</div> <div>Set-VMFirmware</div> <div>Set-VMHost</div> <div>Set-VMProcessor</div>	<div>▼</div> <div>SERVER1 - EnableEnhancedSessionMode \$true</div> <div>SERVER1 - EnableSecureBoot on</div> <div>SERVER1 - ExposeVirtualizationExtensions \$true</div> <div>VM1 - EnableEnhancedSessionMode \$true</div> <div>VM1 - EnableSecureBoot on</div> <div>VM1 - ExposeVirtualizationExtensions \$true</div>
--	--

Answer:

Answer Area

<div>▼</div> <div>Enable-VMIntegrationService</div> <div>Set-VM</div> <div>Set-VMBios</div> <div>Set-VMFirmware</div> <div>Set-VMHost</div> <div>Set-VMProcessor</div>	<div>▼</div> <div>SERVER1 - EnableEnhancedSessionMode \$true</div> <div>SERVER1 - EnableSecureBoot on</div> <div>SERVER1 - ExposeVirtualizationExtensions \$true</div> <div>VM1 - EnableEnhancedSessionMode \$true</div> <div>VM1 - EnableSecureBoot on</div> <div>VM1 - ExposeVirtualizationExtensions \$true</div>
--	--

Explanation:

<https://docs.microsoft.com/en-us/virtualization/hyper-v-on-windows/user-guide/nested-virtualization>

NEW QUESTION 205

Hotspot

You have a four-node Hyper-V cluster named Cluster1. A virtual machine named VM1 runs on Cluster1. VM1 has a network adapter that connects to a virtual switch named Network1. You need to prevent a network disconnection on VM1 from causing VM1 to move to another cluster node. What command should you run?

Answer Area

<div>▼</div> <div>Remove-ClusterVMMonitoredItem -VirtualMachine VM1</div> <div>Set-VM -VMName VM1</div> <div>Set-VMNetworkAdapter -VMName VM1</div> <div>Set-VMSwitch -Name Network1</div>	<div>▼</div> <div>-EventSource Network</div> <div>-lovInterruptModeration Off</div> <div>-lovWeight 1</div> <div>-NotMonitoredInCluster \$true</div> <div>-RouterGuard Off</div>
--	--

Answer:

Answer Area

<div>▼</div> <div>Remove-ClusterVMMonitoredItem -VirtualMachine VM1</div> <div>Set-VM -VMName VM1</div> <div>Set-VMNetworkAdapter -VMName VM1</div> <div>Set-VMSwitch -Name Network1</div>	<div>▼</div> <div>-EventSource Network</div> <div>-lovInterruptModeration Off</div> <div>-lovWeight 1</div> <div>-NotMonitoredInCluster \$true</div> <div>-RouterGuard Off</div>
--	--

NEW QUESTION 206

.....

NEW QUESTION 212

Drag and Drop

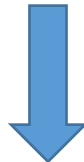
Your network contains an Active Directory domain named contoso.com. The domain contains a server named Server1 that runs Windows Server 2016. Server1 allows inbound connectivity from all computers in the contoso.com domain. Server1 has an IP address of 192.168.0.10. Server1 hosts a Windows container named Container1. Container1 hosts a website that is accessible on port 80. You need to ensure that you can use the Docker client to manage Container1 from any computer in the domain. Which four cmdlets should you run in sequence?

Actions	Answer Area
Restart-Service docker	
New-ContainerNetwork- Name nat1 – Mode NAT- SubnetPrefix 192.168.0.0/24 – GatewayAddress 192.168.0.10	
Add-Content 'c:\programdata\docker\config\daemon.json' '{"hosts": ["tcp://127.0.0.1:80", "npipe://"]}'	➤
Add-Content 'c:\programdata\docker\config\daemon.json' '{"hosts": ["tcp://0.0.0.0:2375", "npipe://"]}'	➤
New-Item-Type File c:\programData\docker\config\daemon.json	⬅
	⬆

Answer:

.....

Get Complete Version Exam 70-740 Dumps with VCE and PDF Here



<https://www.passleader.com/70-740.html>