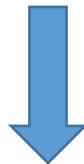


## Microsoft MCSA Certification 70-742 Exam



- **Vendor: Microsoft**
- **Exam Code: 70-742**
- **Exam Name: Identity with Windows Server 2016**

**Get Complete Version Exam 70-742 Dumps with VCE and PDF Here**



<https://www.passleader.com/70-742.html>

**QUESTION 1**

You have a server named Server1 that runs Windows Server 2016. You need to configure Server1 as a Web Application Proxy. Which server role or role service should you install on Server1?

- A. Remote Access
- B. Active Directory Federation Services
- C. Web Server (IIS)
- D. DirectAccess and VPN (RAS)
- E. Network Policy and Access Services

**Answer: A**

**QUESTION 2**

**Note: This question is part of a series of questions that present the same scenario. Each question in the series contains a unique solution that might meet the stated goals. Some question sets might have more than one correct solution, while others might not have a correct solution. After you answer a question in this section, you will NOT be able to return to it. As a result, these questions will not appear in the review screen.**

Your network contains an Active Directory forest named contoso.com. The forest contains a member server named Server1 that runs Windows Server 2016. All domain controllers run Windows Server 2012 R2. Contoso.com has the following configuration:

```
PS C:\> (Get-ADForest).ForestMode
Windows2008R2Forest
PS C:\> (Get-ADDomain).DomainMode
Windows2008R2Domain
PS C:\>
```

You plan to deploy an Active Directory Federation Services (AD FS) farm on Server1 and to configure device registration. You need to configure Active Directory to support the planned deployment.

Solution: You raise the domain functional level to Windows Server 2012 R2.

Does this meet the goal?

- A. Yes
- B. No

**Answer: B**

**Explanation:**

Device Registration requires Windows Server 2012 R2 forest schema (not just domain schema).

**QUESTION 3**

Your network contains an Active Directory forest named contoso.com. The forest contains a single domain. The domain contains a server named Server1. An administrator named Admin01 plans to configure Server1 as a standalone certification authority (CA). You need to identify to which group Admin01 must be a member to configure Server1 as a standalone CA. The solution must use the principle of least privilege. To which group should you add Admin01?

- A. Administrators on Server1.
- B. Domain Admins in contoso.com
- C. Cert Publishers on Server1
- D. Key Admins in contoso.com

**Answer: A**

**QUESTION 4**

You network contains an Active Directory domain named contoso.com. The domain contains 1,000 desktop computers and 500 laptops. An organizational unit (OU) named OU1 contains the computer accounts for the desktop computers and the laptops. You create a Windows PowerShell script named Script1.ps1 that removes temporary files and cookies. You create a Group Policy object (GPO) named GPO1 and link GPO1 to OU1. You need to run the script once weekly only on the laptops. What should you do?

- A. In GPO1, create a File preference that uses item-level targeting.
- B. In GPO1, create a Scheduled Tasks preference that uses item-level targeting.
- C. In GPO1, configure the File System security policy. Attach a WMI filter to GPO1.
- D. In GPO1, add Script1.ps1 as a startup script. Attach a WMI filter to GPO1.

**Answer: B**

**QUESTION 5**

**Note: This question is part of a series of questions that present the same scenario. Each question in the series contains a unique solution that might meet the stated goals. Some question sets might have more than one correct solution, while others might not have a correct solution. After you answer a question in this section, you will NOT be able to return to it. As a result, these questions will not appear in the review screen.**

Your network contains an Active Directory forest named contoso.com. The forest contains a member server named Server1 that runs Windows Server 2016. All domain controllers run Windows Server 2012 R2. Contoso.com has the following configuration:

```
PS C:\> (Get-ADForest).ForestMode
Windows2008R2Forest
PS C:\> (Get-ADDomain).DomainMode
Windows2008R2Domain
PS C:\>
```

You plan to deploy an Active Directory Federation Services (AD FS) farm on Server1 and to configure device registration. You need to configure Active Directory to support the planned deployment.

Solution: You upgrade a domain controller to Windows Server 2016.

Does this meet the goal?

- A. Yes
- B. No

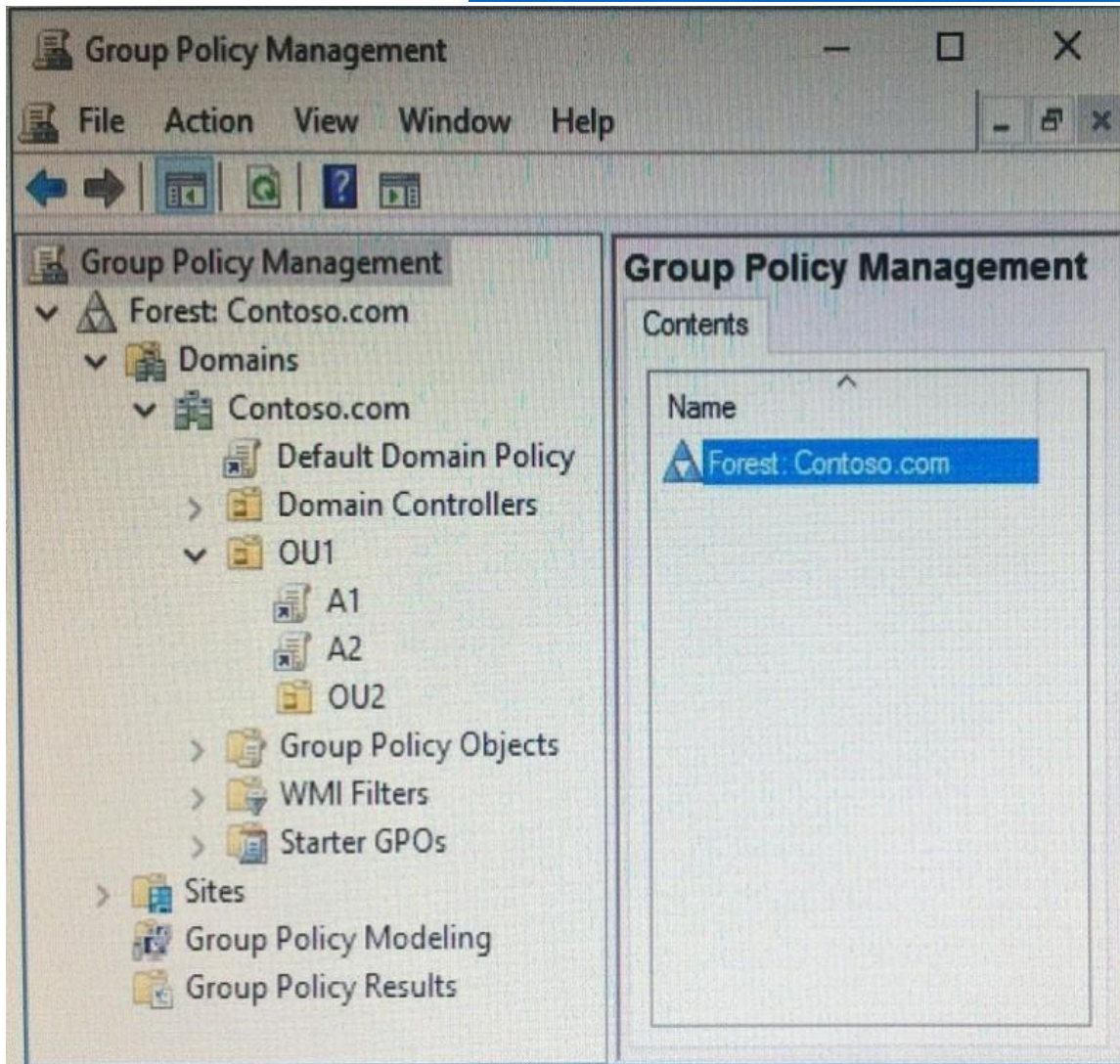
**Answer: B**

**Explanation:**

Device Registration requires Windows Server 2012 R2 forest schema.

**QUESTION 6**

Your network contains an Active Directory domain named contoso.com. You open Group Policy Management as shown in the exhibit:



You discover that some of the settings configured in the A1 Group Policy object (GPO) fail to apply to the users in the OU1 organizational unit (OU). You need to ensure that all of the settings in A1 apply to the users in OU1. What should you do?

- A. Enable loopback policy processing in A1.
- B. Block inheritance on OU1.
- C. Modify the policy processing order for OU1.
- D. Modify the GPO Status of A1.

**Answer: C**

#### **QUESTION 7**

Your network contains an Active Directory domain named contoso.com. You have an organizational unit (OU) named OU1 that contains the computer accounts of two servers and the user account of a user named User1. A Group Policy object (GPO) named GPO1 is linked to OU1. You have an application named App1 that installs by using an application installer named App1.exe. You need to publish App1 to OU1 by using Group Policy. What should you do?

- A. Create a Config.zap file and add a file to the File System node to the Computer Configuration node of GPO1.
- B. Create a Config.xml file and add a software installation package to the User Configuration node of GPO1.
- C. Create a Config.zap file and add a software installation package to the User Configuration node of GPO1.
- D. Create a Config.xml file and add a software installation package to the Computer Configuration node of GPO1.

**Answer: C**

**QUESTION 8**

You deploy a new enterprise certification authority (CA) named CA1. You plan to issue certificates based on the User certificate template. You need to ensure that the issued certificates are valid for two years and support autoenrollment. What should you do first?

- A. Run the certutil.exe command and specify the resubmit parameter.
- B. Duplicate the User certificate template.
- C. Add a new certificate template for CA1 to issue.
- D. Modify the Request Handling settings for the CA.

**Answer: B**

**QUESTION 9**

Your network contains an Active Directory domain named contoso.com. The domain functional level is Windows Server 2012 R2. You need to secure several high-privilege user accounts to meet the following requirements: What should you do?

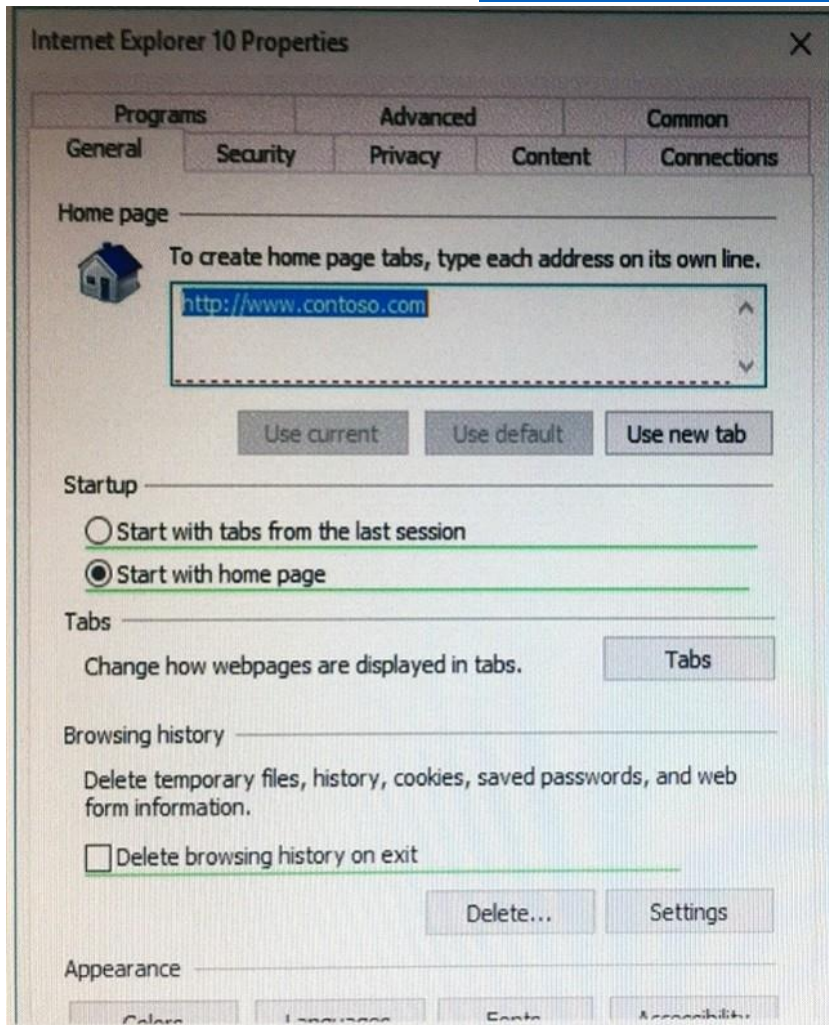
- A. Create a universal security group for the user accounts and modify the Security settings of the group.
- B. Add the users to the Windows Authorization Access Group group.
- C. Add the user to the Protected Users group.
- D. Create a separate organizational unit (OU) for the user accounts and modify the Security settings of the OU.

**Answer: C**

**QUESTION 10**

Your network contains an Active Directory domain named contoso.com. The domain contains a Group Policy object (GPO) named GPO1. You configure the Internet Settings preference in GPO1 as shown in the exhibit:





A user reports that the homepage of Internet Explorer is not set to <http://www.contoso.com>. You confirm that the other settings in GPO1 are applied. You need to configure GPO1 to set the Internet Explorer homepage. What should you do?

- A. Edit the GPO1 preference and press F5.
- B. Modify Security Settings for GPO1.
- C. Modify WMI Filtering for GPO1.
- D. Modify the GPO1 preference to use item-level targeting.

**Answer: A**

**Explanation:**

The red dotted line under the homepage URL means that setting is disabled. Pressing F5 enables all settings.

#### QUESTION 11

**Note:** This question is part of a series of questions that present the same scenario. Each question in the series contains a unique solution that might meet the stated goals. Some question sets might have more than one correct solution, while others might not have a correct solution. After you answer a question in this section, you will NOT be able to return to it. As a result, these questions will not appear in the review screen.

Your network contains an Active Directory domain named contoso.com. The domain contains a

server named Server1 that runs Windows Server 2016. The computer account for Server1 is in organizational unit (OU) named OU1. You create a Group Policy object (GPO) named GPO1 and link GPO1 to OU1. You need to add a domain user named User1 to the local Administrators group on Server1.

Solution: From the Computer Configuration node of GPO1, you configure the Local Users and Groups preference.

Does this meet the goal?

- A. Yes
- B. No

**Answer: A**

#### QUESTION 12

You network contains an Active Directory domain named contoso.com. The domain contains an enterprise certification authority (CA) named CA1. You have a test environment that is isolated physically from the corporate network and the Internet. You deploy a web server to the test environment. On CA1, you duplicate the Web Server template, and you name the template Web\_Cert\_Test. For the web server, you need to request a certificate that does not contain the revocation information of CA1. What should you do first?

- A. From the properties of CA1, allow certificates to be published to the file system.
- B. From the properties of CA1, select Restrict enrollment agents, and then add Web\_Cert\_Test to the restricted enrollment agent.
- C. From the properties of Web\_Cert\_Test, assign the Enroll permission to the guest account.
- D. From the properties of Web\_Cert\_Test, set the Compatibility setting of CA1 to Windows Server 2016.

**Answer: D**

#### QUESTION 13

**Note: This question is part of a series of questions that use the same or similar answer choices. An answer choice may be correct for more than one question in the series. Each question is independent of the other questions in this series. Information and details provided in a question apply only to that question.**

Your network contains an Active Directory domain named contoso.com. The domain contains 5,000 user accounts. You have a Group Policy object (GPO) named DomainPolicy that is linked to the domain and a GPO named DCPolicy that is linked to the Domain Controllers organizational unit (OU). You need to force users to change their account password at least every 30 days. What should you do?

- A. From the Computer Configuration node of DCPolicy, modify Security Settings.
- B. From the Computer Configuration node of DomainPolicy, modify Security Settings.
- C. From the Computer Configuration node of DomainPolicy, modify Administrative Templates.
- D. From the User Configuration node of DCPolicy, modify Security Settings.
- E. From the User Configuration node of DomainPolicy, modify Folder Redirection.
- F. From user Configuration node of DomainPolicy, modify Administrative Templates.
- G. From Preferences in the User Configuration node of DomainPolicy, modify Windows Settings.
- H. From Preferences in the Computer Configuration node of DomainPolicy, modify Windows Settings.

**Answer: B**

#### QUESTION 14

**Note: This question is part of a series of questions that present the same scenario. Each**

question in the series contains a unique solution that might meet the stated goals. Some question sets might have more than one correct solution, while others might not have a correct solution. After you answer a question in this section, you will NOT be able to return to it. As a result, these questions will not appear in the review screen.

You network contains an Active Directory forest named contoso.com. The forest contains an Active Directory Rights Management Services (AD RMS) deployment. Your company establishes a partnership with another company named Fabrikam, Inc. The network of Fabrikam contains an Active Directory forest named fabrikam.com and an AD RMS deployment. You need to ensure that the users in contoso.com can access rights protected documents sent by the users in fabrikam.com. Solution: From AD RMS in fabrikam.com, you configure contoso.com as a trusted publisher domain. Does this meet the goal?

- A. Yes
- B. No

**Answer: B**

**Explanation:**

Contoso needs to trust Fabrikam.

#### QUESTION 15

**Note:** This question is part of a series of questions that use the same scenario. For you convenience, the scenario is repeated in each question. Each question presents a different goal and answer choices, but the text of the scenario is exactly the same in each question in this series.

**Start of repeated scenario.**

You work for a company named Contoso, Ltd. The network contains an Active Directory forest named contoso.com. A forest trust exists between contoso.com and an Active Directory forest named adatum.com. The contoso.com forest contains the objects configured as shown in the following table:

Object name	Object type	Group scope	Group type
User1	User	<i>Not applicable</i>	<i>Not applicable</i>
User2	User	<i>Not applicable</i>	<i>Not applicable</i>
Computer1	Computer	<i>Not applicable</i>	<i>Not applicable</i>
Group1	Group	Domain local	Security
Group2	Group	Domain local	Security
Group3	Group	Universal	Security
Group4	Group	Global	Security
Group5	Group	Universal	Security

Group1 and Group2 contain only user accounts. Contoso hires a new remote user named User3. User3 will work from home and will use a computer named Computer3 that runs Windows 10. Computer3 is currently in a workgroup. An administrator named Admin1 is a member of the Domain Admins group in the contoso.com domain. From Active Directory Users and Computers, you create an organizational unit (OU) named OU1 in the contoso.com domain, and then you create a contact named Contact1 in OU1. An administrator of the adatum.com domain runs the Set-ADUser cmdlet to configure a user named User1 to have a user logon name of User1@litwareinc.com.

**End of repeated scenario.**

You need to ensure that User2 can add Group4 as a member of Group5. What should you modify?



- A. the group scope of Group5
- B. the Managed By settings of Group4
- C. the group scope of Group4
- D. the Managed By settings of Group5

**Answer: D**

**QUESTION 16**

Your network contains an enterprise root certification authority (CA) named CA1. Multiple computers on the network successfully enroll for certificates that will expire in one year. The certificates are based on a template named Secure\_Computer. The template uses schema version 2. You need to ensure that new certificates based on Secure\_Computer are valid for three years. What should you do?

- A. Modify the Validity period for the certificate template.
- B. Instruct users to request certificates by running the certreq.exe command.
- C. Instruct users to request certificates by using the Certificates console.
- D. Modify the Validity period for the root CA certificate.

**Answer: A**

**QUESTION 17**

Your network contains an Active Directory forest named contoso.com. The forest contains three domains named contoso.com, corp.contoso.com, and ext.contoso.com. The forest contains three Active Directory sites named Site1, Site2, and Site3. You have the three administrators as described in the following table:

Administrator name	Group membership	Domain
Admin1	Domain Admins	Contoso.com
Admin2	Domain Admins	Corp.contoso.com
Admin3	Enterprise Admins	Contoso.com

You create a Group Policy object (GPO) named GPO1. Which administrator or administrators can link GPO1 to Site2?

- A. Admin1 and Admin2 only
- B. Admin1, Admin2, and Admin3
- C. Admin3 only
- D. Admin1 and Admin3 only

**Answer: D**

**Explanation:**

[https://technet.microsoft.com/en-us/library/cc732979\(v=ws.11\).aspx](https://technet.microsoft.com/en-us/library/cc732979(v=ws.11).aspx)

**QUESTION 18**

**Note: This question is part of a series of questions that use the same or similar answer choices. An answer choice may be correct for more than one question in the series. Each question is independent of the other questions in this series. Information and details provided in a question apply only to that question.**

Your network contains an Active Directory domain named contoso.com. The domain contains 5,000 user accounts. You have a Group Policy object (GPO) named DomainPolicy that is linked to the

domain and a GPO named DCPolicy that is linked to the Domain Controllers organizational unit (OU). You need to use the application control policy settings to prevent several applications from running on the network. What should you do?

- A. From the Computer Configuration node of DCPolicy, modify Security Settings.
- B. From the Computer Configuration node of DomainPolicy, modify Security Settings.
- C. From the Computer Configuration node of DomainPolicy, modify Administrative Templates.
- D. From the User Configuration node of DCPolicy, modify Security Settings.
- E. From the User Configuration node of DomainPolicy, modify Folder Redirection.
- F. From user Configuration node of DomainPolicy, modify Administrative Templates.
- G. From Preferences in the User Configuration node of DomainPolicy, modify Windows Settings.
- H. From Preferences in the Computer Configuration node of DomainPolicy, modify Windows Settings.

**Answer: B**

#### QUESTION 19

**Note: This question is part of a series of questions that use the same scenario. For your convenience, the scenario is repeated in each question. Each question presents a different goal and answer choices, but the text of the scenario is exactly the same in each question in this series.**

##### **Start of repeated scenario.**

You work for a company named Contoso, Ltd. The network contains an Active Directory forest named contoso.com. A forest trust exists between contoso.com and an Active Directory forest named adatum.com. The contoso.com forest contains the objects configured as shown in the following table:

Object name	Object type	Group scope	Group type
User1	User	<i>Not applicable</i>	<i>Not applicable</i>
User2	User	<i>Not applicable</i>	<i>Not applicable</i>
Computer1	Computer	<i>Not applicable</i>	<i>Not applicable</i>
Group1	Group	Domain local	Security
Group2	Group	Domain local	Security
Group3	Group	Universal	Security
Group4	Group	Global	Security
Group5	Group	Universal	Security

Group1 and Group2 contain only user accounts. Contoso hires a new remote user named User3. User3 will work from home and will use a computer named Computer3 that runs Windows 10. Computer3 is currently in a workgroup. An administrator named Admin1 is a member of the Domain Admins group in the contoso.com domain. From Active Directory Users and Computers, you create an organizational unit (OU) named OU1 in the contoso.com domain, and then you create a contact named Contact1 in OU1. An administrator of the adatum.com domain runs the Set-ADUser cmdlet to configure a user named User1 to have a user logon name of User1@litwareinc.com.

##### **End of repeated scenario.**

You need to ensure that Admin1 can add Group2 as a member of Group3. What should you modify?

- A. Modify the Security settings of Group3.
- B. Modify the group scope of Group3.
- C. Modify the group type of Group3.

D. Set Admin1 as the manager of Group3.

**Answer: B**

**QUESTION 20**

Your network contains an Active Directory forest named contoso.com. A partner company has a forest named fabrikam.com. Each forest contains one domain. You need to provide access for a group named Research in fabrikam.com to resources in contoso.com. The solution must use the principle of least privilege. What should you do?

- A. Create an external trust from fabrikam.com to contoso.com. Enable Active Directory split permissions in fabrikam.com.
- B. Create an external trust from contoso.com to fabrikam.com. Enable Active Directory split permissions in contoso.com.
- C. Create a one-way forest trust from contoso.com to fabrikam.com that uses selective authentication.
- D. Create a one-way forest trust from fabrikam.com to contoso.com that uses selective authentication.

**Answer: C**

**QUESTION 21**

Your network contains an Active Directory forest named contoso.com. Your company plans to hire 500 temporary employees for a project that will last 90 days. You create a new user account for each employee. An organizational unit (OU) named Temp contains the user accounts for the employees. You need to prevent the new users from accessing any of the resources in the domain after 90 days. What should you do?

- A. Run the Get-ADUser cmdlet and pipe the output to the Set-ADUser cmdlet.
- B. Create a group that contains all of the users in the Temp OU. Create a Password Setting object (PSO) for the new group.
- C. Create a Group Policy object (GPO) and link the GPO to the Temp OU. Modify the Password Policy settings of the GPO.
- D. Run the GET-ADOrganizationalUnit cmdlet and pipe the output to the Set-Date cmdlet.

**Answer: A**

**QUESTION 22**

Your network contains an Active Directory forest named contoso.com. The forest contains a member server named Server1 that runs Windows Server 2016. Server1 is located in the perimeter network. You install the Active Directory Federation Services server role on Server1. You create an Active Directory Federation Services (AD FS) farm by using a certificate that has a subject name of sts.contoso.com. You need to enable certificate authentication from the Internet on Server1. Which two inbound TCP ports should you open on the firewall? Each correct answer presents part of the solution.

- A. 389
- B. 443
- C. 3389
- D. 8531
- E. 49443

**Answer: BE**

**QUESTION 23**

**Note:** This question is part of a series of questions that present the same scenario. Each question in the series contains a unique solution that might meet the stated goals. Some question sets might have more than one correct solution, while others might not have a correct solution. After you answer a question in this section, you will NOT be able to return to it. As a result, these questions will not appear in the review screen.

Your network contains an Active Directory forest named contoso.com. The forest contains a member server named Server1 that runs Windows Server 2016. All domain controllers run Windows Server 2012 R2. Contoso.com has the following configuration:

```
PS C:\> (Get-ADForest).ForestMode
Windows2008R2Forest
PS C:\> (Get-ADDomain).DomainMode
Windows2008R2Domain
PS C:\>
```

You plan to deploy an Active Directory Federation Services (AD FS) farm on Server1 and to configure device registration. You need to configure Active Directory to support the planned deployment.

Solution: You run adprep.exe from the Windows Server 2016 installation media.

Does this meet the goal?

- A. Yes
- B. No

**Answer: A**

**Explanation:**

Device Registration requires Windows Server 2012 R2 forest schema.

**QUESTION 24**

Your network contains an Active Directory domain named contoso.com. You have an organizational unit (OU) named TestOU that contains test computers. You need to enable a technician named Tech1 to create Group Policy objects (GPOs) and to link the GPOs to TestOU. The solution must use the principle of least privilege. Which two actions should you perform? Each correct answer presents part of the solution.

- A. Add Tech1 to the Group Policy Creator Owners group.
- B. From Group Policy Management, modify the Delegation settings of the TestOU OU.
- C. Add Tech1 to the Protected Users group.
- D. From Group Policy Management, modify the Delegation settings of the contoso.com container.
- E. Create a new universal security group and add Tech1 to the group.

**Answer: AB**

**QUESTION 25**

You have users that access web applications by using HTTPS. The web applications are located on the servers in your perimeter network. The servers use certificates obtained from an enterprise root certification authority (CA). The certificates are generated by using a custom template named WebApps. The certificate revocation list (CRL) is published to Active Directory. When users attempt to access the web applications from the Internet, the users report that they receive a revocation warning message in their web browser. The users do not receive the message when they access the web applications from the intranet. You need to ensure that the warning message is not generated when the users attempt to access the web applications from the Internet. What should you do?

- A. Install the Certificate Enrollment Web Service role service on a server in the perimeter network.
- B. Modify the WebApps certificate template, and then issue the certificates used by the web application servers.
- C. Install the Web Application Proxy role service on a server in the perimeter network. Create a publishing point for the CA.
- D. Modify the CRL distribution point, and then reissue the certificates used by the web application servers.

**Answer: C**

**QUESTION 26**

Your network contains an Active Directory forest named contoso.com. The forest contains several domains. An administrator named Admin01 installs Windows Server 2016 on a server named Server1 and then joins Server1 to the contoso.com domain. Admin01 plans to configure Server1 as an enterprise root certification authority (CA). You need to ensure that Admin01 can configure Server1 as an enterprise CA. The solution must use the principle of least privilege. To which group should you add Admin01?

- A. Server Operators in the contoso.com domain
- B. Cert Publishers on Server1
- C. Enterprise Key Admins in the contoso.com domain
- D. Enterprise Admins in the contoso.com domain

**Answer: D**

**QUESTION 27**

**Note: This question is part of a series of questions that use the same or similar answer choices. An answer choice may be correct for more than one question in the series. Each question is independent of the other questions in this series. Information and details provided in a question apply only to that question.**

Your network contains an Active Directory domain named contoso.com. The domain contains 5,000 user accounts. You have a Group Policy object (GPO) named DomainPolicy that is linked to the domain and a GPO named DCPolicy that is linked to the Domain Controllers organizational unit (OU). You need to configure the Documents folder of every user to be stored on a server named FileServer1. What should you do?

- A. From the Computer Configuration node of DCPolicy, modify Security Settings.
- B. From the Computer Configuration node of DomainPolicy, modify Security Settings.
- C. From the Computer Configuration node of DomainPolicy, modify Administrative Templates.
- D. From the User Configuration node of DCPolicy, modify Security Settings.
- E. From the User Configuration node of DomainPolicy, modify Folder Redirection.
- F. From user Configuration node of DomainPolicy, modify Administrative Templates.
- G. From Preferences in the User Configuration node of DomainPolicy, modify Windows Settings.
- H. From Preferences in the Computer Configuration node of DomainPolicy, modify Windows Settings.

**Answer: E**

**QUESTION 28**

Your network contains an Active Directory forest named contoso.com. You have an Active Directory Federation Services (AD FS) farm. The farm contains a server named Server1 that runs Windows Server 2012 R2. You add a server named Server2 to the farm. Server2 runs Windows Server 2016. You remove Server1 from the farm. You need to ensure that you can use role separation to manage the farm. Which cmdlet should you run?



- A. Set-AdfsFarmInformation
- B. Update-AdfsRelyingPartyTrust
- C. Set-AdfsProperties
- D. Invoke-AdfsFarmBehaviorLevelRaise

**Answer: A**

#### QUESTION 29

**Note: This question is part of a series of questions that present the same scenario. Each question in the series contains a unique solution that might meet the stated goals. Some question sets might have more than one correct solution, while others might not have a correct solution. After you answer a question in this section, you will NOT be able to return to it. As a result, these questions will not appear in the review screen.**

Your network contains an Active Directory domain named contoso.com. The domain contains a server named Server1 that runs Windows Server 2016. The computer account for Server1 is in organizational unit (OU) named OU1. You create a Group Policy object (GPO) named GPO1 and link GPO1 to OU1. You need to add a domain user named User1 to the local Administrators group on Server1.

Solution: From a domain controller, you run the Set-AdComputer cmdlet.  
Does this meet the goal?

- A. Yes
- B. No

**Answer: B**

#### QUESTION 30

Your company recently deployed a new child domain to an Active Directory forest. You discover that a user modified the Default Domain Policy to configure several Windows components in the child domain. A company policy states that the Default Domain Policy must be used only to configure domain-wide security settings. You create a new Group Policy object (GPO) and configure the settings for the Windows components in the new GPO. You need to restore the Default Domain Policy to the default settings from when the domain was first installed. What should you do?

- A. From Group Policy Management, click Starter GPOs, and then click Manage Backups.
- B. From a command prompt, run the dcgpofix.exe command.
- C. From Windows PowerShell, run the Copy-GPO cmdlet.
- D. Run ntdsutil.exe to perform a metadata cleanup and a semantic database analysis.

**Answer: B**

#### QUESTION 31

**Note: This question is part of a series of questions that use the same or similar answer choices. An answer choice may be correct for more than one question in the series. Each question is independent of the other questions in this series. Information and details provided in a question apply only to that question.**

Your network contains an Active Directory forest named contoso.com. The forest functional level is Windows Server 2012 R2. You need to ensure that a domain administrator can recover a deleted Active Directory object quickly. Which tool should you use?

- A. Dsadd quota
- B. Dsmode

- C. Active Directory Administrative Center
- D. DsacIs
- E. Dsamain
- F. Active Directory Users and Computers
- G. Ntdsutil
- H. Group Policy Management Console

**Answer: C**

#### **QUESTION 32**

**Note:** This question is part of a series of questions that present the same scenario. Each question in the series contains a unique solution that might meet the stated goals. Some question sets might have more than one correct solution, while others might not have a correct solution. After you answer a question in this section, you will NOT be able to return to it. As a result, these questions will not appear in the review screen.

Your network contains an Active Directory forest named contoso.com. The forest contains an Active Directory Rights Management Services (AD RMS) deployment. Your company establishes a partnership with another company named Fabrikam, Inc. The network of Fabrikam contains an Active Directory forest named fabrikam.com and an AD RMS deployment. You need to ensure that the users in contoso.com can access rights protected documents sent by the users in fabrikam.com. Solution: From AD RMS in contoso.com, you configure fabrikam.com as a trusted user domain. Does this meet the goal?

- A. Yes
- B. No

**Answer: B**

**Explanation:**

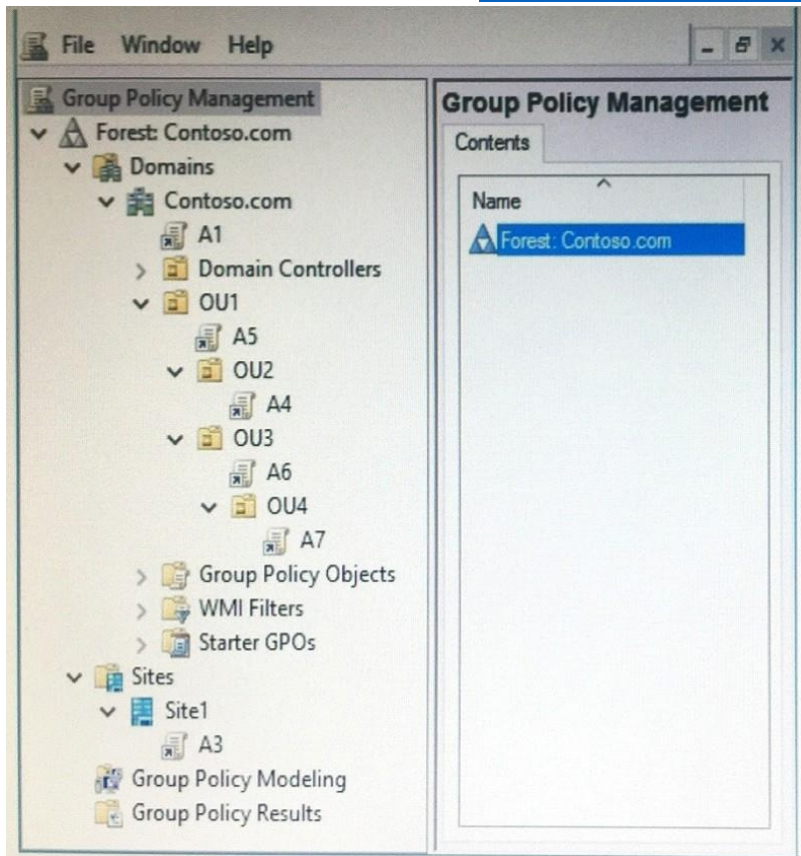
Contoso would need to be the Trusted User Domain.

#### **QUESTION 33**

**Note:** This question is part of a series of questions that use the same scenario. For your convenience, the scenario is repeated in each question. Each question presents a different goal and answer choices, but the text of the scenario is exactly the same in each question in this series.

**Start of repeated scenario.**

Your network contains an Active Directory domain named contoso.com. The domain contains a single site named Site1. All computers are in Site1. The Group Policy objects (GPOs) for the domain are configured as shown in the exhibit:



The relevant users and client computer in the domain are configured as shown in the following table:

Object name	Object type	Object location
Computer	Computer	OU4
User1	User	OU4
User2	User	OU2

**End of repeated scenario.**

You are evaluating what will occur when you block inheritance on OU4. Which GPO or GPOs will apply to User1 when the user signs in to Computer1 after block inheritance is configured?

- A. A1, A5, and A6
- B. A3, A1, A5, and A7
- C. A3 and A7 only
- D. A7 only

**Answer: D**

**QUESTION 34**

**Note:** This question is part of a series of questions that present the same scenario. Each question in the series contains a unique solution that might meet the stated goals. Some question sets might have more than one correct solution, while others might not have a correct solution. After you answer a question in this section, you will NOT be able to return

**to it. As a result, these questions will not appear in the review screen.**

You network contains an Active Directory forest named contoso.com. The forest contains an Active Directory Rights Management Services (AD RMS) deployment. Your company establishes a partnership with another company named Fabrikam, Inc. The network of Fabrikam contains an Active Directory forest named fabrikam.com and an AD RMS deployment. You need to ensure that the users in contoso.com can access rights protected documents sent by the users in fabrikam.com. Solution: From AD RMS in contoso.com, you configure fabrikam.com as a trusted publisher domain. Does this meet the goal?

- A. Yes
- B. No

**Answer: A**

#### **QUESTION 35**

Your network contains an Active Directory domain named contoso.com. You have a Group Policy object (GPO) named GPO1. GPO1 is linked to an organizational unit (OU) named OU1. GPO1 contains several corporate desktop restrictions that apply to all computers. You plan to deploy a printer to the computers in OU1. You need to ensure that any user who signs in to a computer that runs Windows 10 in OU1 receives the new printer. All of the computers in OU1 must continue to apply the corporate desktop restrictions from GPO1. What should you configure?

- A. a user preference and a WMI filter on GPO1
- B. a computer preference that uses item-level targeting
- C. a computer preference and WMI filter on GPO1
- D. a user preference that uses item-level targeting

**Answer: D**

#### **QUESTION 36**

**Note: This question is part of a series of questions that present the same scenario. Each question in the series contains a unique solution that might meet the stated goals. Some question sets might have more than one correct solution, while others might not have a correct solution. After you answer a question in this section, you will NOT be able to return to it. As a result, these questions will not appear in the review screen.**

Your network contains an Active Directory domain named contoso.com. The domain contains a server named Server1 that runs Windows Server 2016. The computer account for Server1 is in organizational unit (OU) named OU1. You create a Group Policy object (GPO) named GPO1 and link GPO1 to OU1. You need to add a domain user named User1 to the local Administrators group on Server1.

Solution: From the Computer Configuration node of GPO1, you configure the Account Policies settings.

Does this meet the goal?

- A. Yes
- B. No

**Answer: B**

#### **QUESTION 37**

**Note: This question is part of a series of questions that use the same or similar answer choices. An answer choice may be correct for more than one question in the series. Each question is independent of the other questions in this series. Information and details**

**provided in a question apply only to that question.**

Your network contains an Active Directory domain named contoso.com. You need to limit the number of Active Directory Domain Services (AD DS) objects that a user can create in the domain. Which tool should you use?

- A. Dsadd quota
- B. Dsmode
- C. Active Directory Administrative Center
- D. Dsacls
- E. Dsamain
- F. Active Directory Users and Computers
- G. Ntdsutil
- H. Group Policy Management Console

**Answer: A**

#### **QUESTION 38**

**Note: This question is part of a series of questions that use the same or similar answer choices. An answer choice may be correct for more than one question in the series. Each question is independent of the other questions in this series. Information and details provided in a question apply only to that question.**

Your network contains an Active Directory domain named contoso.com. The domain contains a domain controller named Server1. You recently restored a backup of the Active Directory database from Server1 to an alternate location. The restore operation does not interrupt the Active Directory services on Server1. You need to make the Active Directory data in the backup accessible by using Lightweight Directory Access Protocol (LDAP). Which tool should you use?

- A. Dsadd quota
- B. Dsmode
- C. Active Directory Administrative Center
- D. Dsacls
- E. Dsamain
- F. Active Directory Users and Computers
- G. Ntdsutil
- H. Group Policy Management Console

**Answer: E**

#### **QUESTION 39**

Your network contains an Active Directory forest. The forest contains two domains named litwarenc.com and contoso.com. The contoso.com domain contains two domain controllers named LON-DC01 and LON-DC02. The domain controllers are located in a site named London that is associated to a subnet of 192.168.10.0/24. You discover that LON-DC02 is not a global catalog server. You need to configure LON-DC02 as a global catalog server. What should you do?

- A. From Active Directory Sites and Services, modify the properties of the 192.168.10.0/24 IP subnet.
- B. From Windows PowerShell, run the Set-NetNatGlobal cmdlet.
- C. From Active Directory Sites and Services, modify the NTDS Settings object of LON-DC02.
- D. From Windows PowerShell, run the Enable-ADOptionalFeature cmdlet.

**Answer: C**

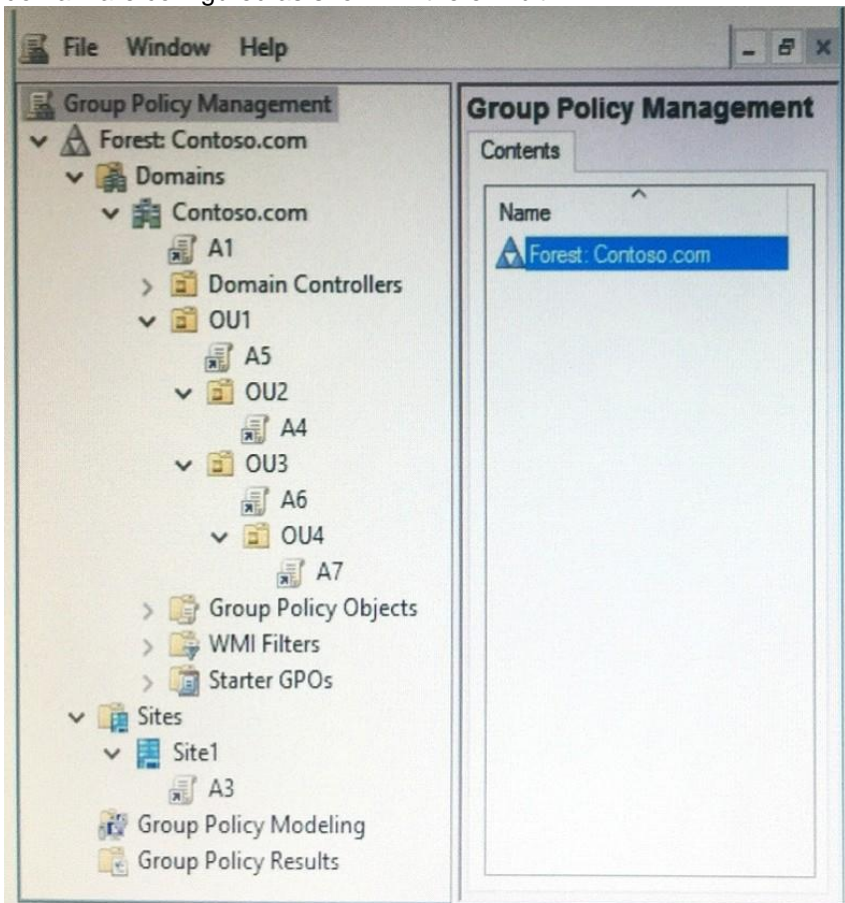


**QUESTION 40**

**Note:** This question is part of a series of questions that use the same scenario. For your convenience, the scenario is repeated in each question. Each question presents a different goal and answer choices, but the text of the scenario is exactly the same in each question in this series.

**Start of repeated scenario.**

Your network contains an Active Directory domain named contoso.com. The domain contains a single site named Site1. All computers are in Site1. The Group Policy objects (GPOs) for the domain are configured as shown in the exhibit:



The relevant users and client computer in the domain are configured as shown in the following table:

Object name	Object type	Object location
Computer	Computer	OU4
User1	User	OU4
User2	User	OU2

**End of repeated scenario.**

You are evaluating what will occur when you disable the Group Policy link for A6. Which GPOs will apply to User2 when the user signs in to Computer1 after the link for A6 is disabled?

- A. A1 and A5 only

- B. A3, A1, and A5 only
- C. A3, A1, A5, and A4 only
- D. A3, A1, A5, and A7

**Answer: D**

**QUESTION 41**

Drag and Drop Question

Your company has multiple offices. The network contains an Active Directory domain named contoso.com. An Active Directory site exists for each office. All of the sites connect to each other by using DEFAULTSITELINK. The company plans to open a new office. The new office will have a domain controller and 100 client computers. You install Windows Server 2016 on a member server in the new office. The new server will become a domain controller. You need to deploy the domain controller to the new office. The solution must ensure that the client computers in the new office will authenticate by using the local domain controller. Which three actions should you perform next in sequence? To answer, move the appropriate actions from the list of actions to the answer area and arrange them in the correct order.

Actions	Answer Area
Create a new site object.	
Create a new connection object.	
Promote the member server to a domain controller.	
Create a new subnet object.	
Move the server object of the domain controller.	

**Answer:**

Actions	Answer Area
	Create a new site object.
Create a new connection object.	Create a new subnet object.
	Promote the member server to a domain controller.
Move the server object of the domain controller.	

**QUESTION 42**

Hotspot Question

You have a server named Server1 that runs Windows Server 2016. Server1 has the Windows Application Proxy role service installed. You need to publish Microsoft Exchange ActiveSync services by using the Publish New Application Wizard. The ActiveSync services must use preauthentication. How should you configure Server1? To answer, select the appropriate options

in the answer area.

**Answer Area**

Preauthentication method:

▼
Active Directory Federation Services (AD FS)
Pass-through

Preauthentication type:

▼
HTTP Basic
OAuth2
Web and MS-OFBA

**Answer:**

**Answer Area**

Preauthentication method:

▼
Active Directory Federation Services (AD FS)
Pass-through

Preauthentication type:

▼
HTTP Basic
OAuth2
Web and MS-OFBA

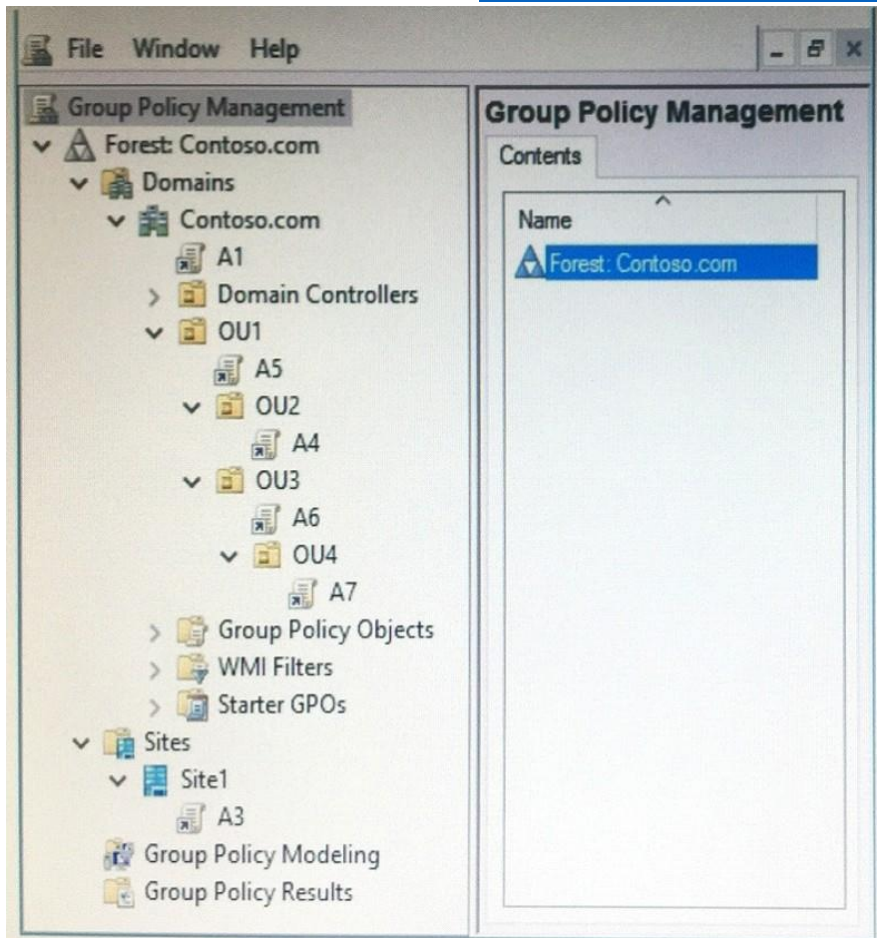
**QUESTION 43**

**Note:** This question is part of a series of questions that use the same scenario. For your convenience, the scenario is repeated in each question. Each question presents a different goal and answer choices, but the text of the scenario is exactly the same in each question in this series.

Drag and Drop Question

**Start of repeated scenario.**

Your network contains an Active Directory domain named contoso.com. The domain contains a single site named Site1. All computers are in Site1. The Group Policy objects (GPOs) for the domain are configured as shown in the exhibit:



The relevant users and client computer in the domain are configured as shown in the following table:

Object name	Object type	Object location
Computer	Computer	OU4
User1	User	OU4
User2	User	OU2

**End of repeated scenario.**

You plan to enforce the GPO link for A6. Which five GPOs will apply to User1 in sequence when the user signs in to Computer1 after the link is enforced? To answer, move the appropriate GPOs from the list of GPOs to the answer area and arrange them in the correct order.

**GPOs**

**Answer Area**

A1
A2
A3
A4
A5
A6
A7

**Answer:**

**GPOs**

**Answer Area**

A2
A4

A3
A1
A5
A7
A6



**QUESTION 44**

Hotspot Question

Your network contains an Active Directory forest. The forest contains one domain named contoso.com. The domain contains two domain controllers named DC1 and DC2. DC1 holds all of the operations master roles. During normal network operations, you run the following commands on DC2:

```
Move-ADDirectoryServerOperationMasterRole -Identity "DC2" -  
OperationMasterRole PDCEmulator
```

```
Move-ADDirectoryServerOperationMasterRole -Identity "DC2" -  
OperationMasterRole RIDMaster
```

DC1 fails. You remove DC1 from the network, and then you run the following command:

```
Move-ADDirectoryServerOperationMasterRole -Identity "DC2" -  
OperationMasterRole SchemaMaster
```

For each of the following statements, select Yes if the statement is true. Otherwise, select No.

**Answer Area**

Statements	Yes	No
DC2 holds the schema master operations role.	<input type="radio"/>	<input type="radio"/>
DC2 holds the PDC emulator master operations role.	<input type="radio"/>	<input type="radio"/>
Currently, you can add additional domains to the forest.	<input type="radio"/>	<input type="radio"/>

**Answer:**

**Answer Area**

Statements	Yes	No
DC2 holds the schema master operations role.	<input type="radio"/>	<input checked="" type="radio"/>
DC2 holds the PDC emulator master operations role.	<input checked="" type="radio"/>	<input type="radio"/>
Currently, you can add additional domains to the forest.	<input type="radio"/>	<input checked="" type="radio"/>

**QUESTION 45**

Hotspot Question

You have a server named Server1 that runs Windows Server 2016. Server1 has the Web Application Proxy role service installed. You are publishing an application named App1 that will use Integrated Windows authentication as shown in the following graphic:

**Publish New Application Wizard** X

CONNECTED TO AD FS

### Publishing Settings

Welcome

Preauthentication

Supported Clients

Relying Party

**Publishing Settings**

Confirmation

Results

Specify the publishing settings for this web application.

Name:  
App1  
This name will appear in the list of published web applications.

---

External URL:  
https://server02.contoso.com/app1

---

External certificate:  
server02.contoso.com View...

☐ Enable HTTP to HTTPS redirection

---

Backend server URL:  
http://server02.contoso.com/publish/app1

---

Backend server SPN:

< Previous
Next >
Publish
Cancel

Use the drop-down menus to select the answer area choice that completes each statement based on the information presented in the graphic.

#### Answer Area

Before you can complete the wizard, you must  
[answer choice]

▼
change the external certificate
configure the Backend server SPN
select Enable HTTP to HTTPS redirection

To ensure that users can access App1 externally,  
you must change the External URL to [answer choice]

▼
https://app1.contoso.com/app1
http://server02.contoso.com/app1
https://server02.contoso.com/publish/app1

**Answer:**

**Answer Area**

Before you can complete the wizard, you must  
[answer choice]

▽
change the external certificate
configure the Backend server SPN
select Enable HTTP to HTTPS redirection

To ensure that users can access App1 externally,  
you must change the External URL to [answer choice]

▽
https://app1.contoso.com/app1
http://server02.contoso.com/app1
https://server02.contoso.com/publish/app1

**QUESTION 46**

**Hotspot Question**

Your network contains an Active Directory domain named contoso.com. Some user accounts in the domain have the P.O. Box attribute set. You plan to remove the value of the P.O. Box attribute for all of the users by using Ldifde. You have a user named User1 who is located in the Users container. How should you configure the LDIF file to remove the value of the P.O. Box attribute for User1? To answer, select the appropriate options in the answer area.

**Answer Area**

dn:

	▼
CN=User1, CN=Users, DC=contoso, DC=com	
CN=User1, OU=Users, DC=contoso, DC=com Contoso.com/Users/User1	
User1	

changetype:

	▼
add	
delete	
modify	

delete: postOfficeBox

**Answer:**



### Answer Area

dn:

	▼
CN=User1, CN=Users, DC=contoso, DC=com	
CN=User1, OU=Users, DC=contoso, DC=com Contoso.com/Users/User1	
User1	

changetype:

	▼
add	
delete	
modify	

delete: postOfficeBox

### QUESTION 47

**Note:** This question is part of a series of questions that use the same scenario. For you convenience, the scenario is repeated in each question. Each question presents a different goal and answer choices, but the text of the scenario is exactly the same in each question in this series.

Hotspot Question

**Start of repeated scenario.**

You work for a company named Contoso, Ltd. The network contains an Active Directory forest named contoso.com. A forest trust exists between contoso.com and an Active Directory forest named adatum.com. The contoso.com forest contains the objects configured as shown in the following table:

Object name	Object type	Group scope	Group type
User1	User	<i>Not applicable</i>	<i>Not applicable</i>
User2	User	<i>Not applicable</i>	<i>Not applicable</i>
Computer1	Computer	<i>Not applicable</i>	<i>Not applicable</i>
Group1	Group	Domain local	Security
Group2	Group	Domain local	Security
Group3	Group	Universal	Security
Group4	Group	Global	Security
Group5	Group	Universal	Security

Group1 and Group2 contain only user accounts. Contoso hires a new remote user named User3. User3 will work from home and will use a computer named Computer3 that runs Windows 10. Computer3 is currently in a workgroup. An administrator named Admin1 is a member of the Domain Admins group in the contoso.com domain. From Active Directory Users and Computers, you create an organizational unit (OU) named OU1 in the contoso.com domain, and then you create a contact named Contact1 in OU1. An administrator of the adatum.com domain runs the Set-ADUser cmdlet to configure a user named User1 to have a user logon name of User1@litwareinc.com.

**End or repeated scenario.**

You need to join Computer3 to the contoso.com domain by using offline domain join. Which command should you use in the contoso.com domain and on Computer3? To answer, select the appropriate options in the answer area.

**Answer Area**

The contoso.com domain:

▼
Add-Computer with the -DomainName parameter
Djoin.exe with the /provision parameter
Djoin.exe with the /requestodj parameter
Net computer with the /add parameter
Netdom.exe with the join parameter

Computer3:

▼
Add-Computer with the -DomainName parameter
Djoin.exe with the /provision parameter
Djoin.exe with the /requestodj parameter
Net computer with the /add parameter
Netdom.exe with the join parameter

**Answer:**

**Answer Area**

The contoso.com domain:

▼
Add-Computer with the -DomainName parameter
Djoin.exe with the /provision parameter
Djoin.exe with the /requestodj parameter
Net computer with the /add parameter
Netdom.exe with the join parameter

Computer3:

▼
Add-Computer with the -DomainName parameter
Djoin.exe with the /provision parameter
Djoin.exe with the /requestodj parameter
Net computer with the /add parameter
Netdom.exe with the join parameter

**QUESTION 48**

Drag and Drop Question

You network contains an Active Directory forest. The forest contains an Active Directory Federation Services (AD FS) deployment. The AD FS deployment contains the following. You create a Microsoft Office 365 tenant named contoso.onmicrosoft.com. You use Microsoft Azure Active Directory Connect (AD Connect) to synchronize all of the users and the UPNs from the contoso.com forest to Office 365. You need to configure federation between Office 365 and the on-premises deployment of Active Directory. Which three commands should you run in sequence from Server1? To answer, move the appropriate commands from the list of commands to the answer area and arrange them in the correct order.

Commands

Answer Area

Convert-MsolDomainToFederated -DomainName  
contoso.com

Enter-PSSession -Name Office365

Convert\_MsolDomainToFederated -DomainName  
adfs.contoso.com

Set-MsolADFSContext -Computer  
server1contoso.com

Connect-MsolService

Set-MsolADFSContext -Computer contoso.com

**Answer:**

Commands

Answer Area

Enter-PSSession -Name Office365

Convert\_MsolDomainToFederated -DomainName  
adfs.contoso.com

Set-MsolADFSContext -Computer contoso.com

Connect-MsolService

Set-MsolADFSContext -Computer  
server1contoso.com

Convert-MsolDomainToFederated -DomainName  
contoso.com

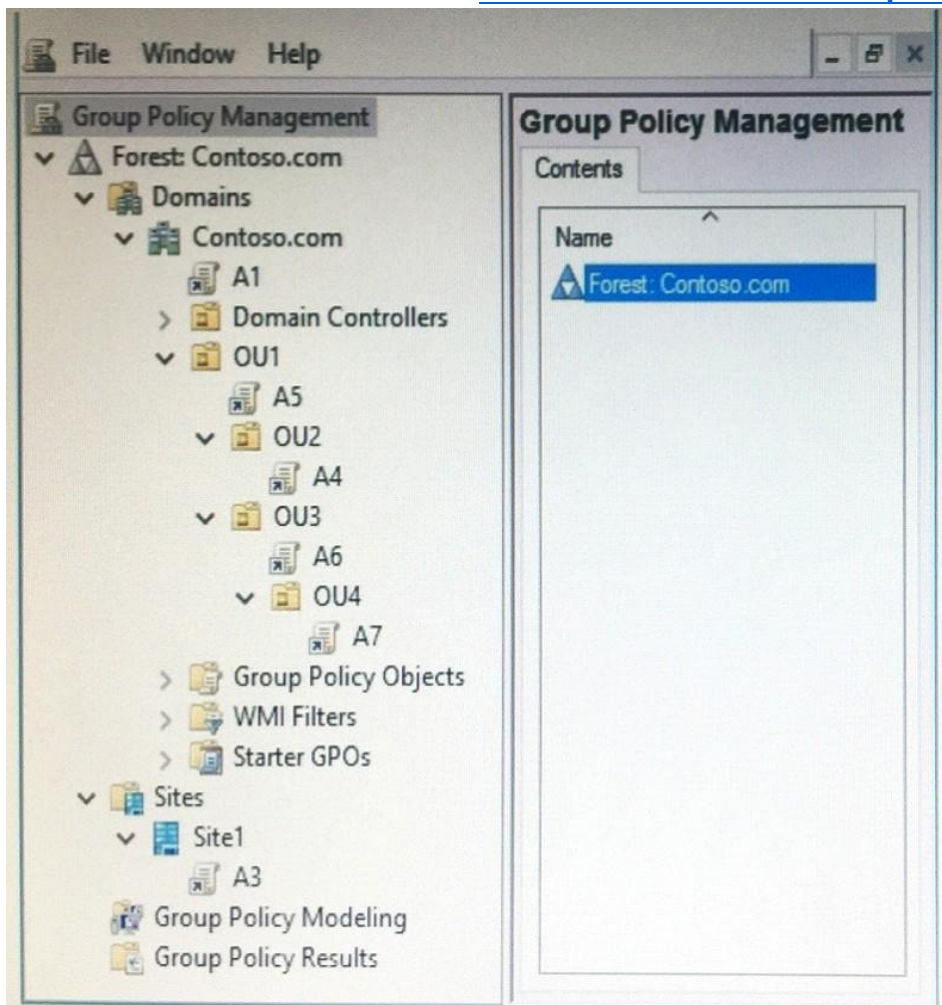
**QUESTION 49**

**Note:** This question is part of a series of questions that use the same scenario. For your convenience, the scenario is repeated in each question. Each question presents a different goal and answer choices, but the text of the scenario is exactly the same in each question in this series.

Drag and Drop Question

**Start of repeated scenario.**

Your network contains an Active Directory domain named contoso.com. The domain contains a single site named Site1. All computers are in Site1. The Group Policy objects (GPOs) for the domain are configured as shown in the exhibit:



The relevant users and client computer in the domain are configured as shown in the following table:

Object name	Object type	Object location
Computer	Computer	OU4
User1	User	OU4
User2	User	OU2

**End of repeated scenario.**

Which five GPOs will apply to User1 in sequence when the user signs in to Computer1? To answer, move the appropriate GPOs from the list to the answer area and arrange them in the correct order.

**GPOs**

**Answer Area**

A1
A2
A3
A4
A5
A6
A7

**Answer:**

**GPOs**

**Answer Area**

A2
A4

A3
A1
A5
A7
A6



**QUESTION 50**

You network contains one Active Directory domain named adatum.com. The domain contains a DNS server named Server1 that runs Windows Server 2016. All domain computers use Server1 for DNS. You sign adatum.com by using DNSSEC. You need to configure the domain computers to validate DNS responses for adatum.com records. What should you configure in Group Policy?

- A. Network List Manager Policies
- B. Network Access Protection (NAP)
- C. Name Resolution Policy
- D. Public Key Policy

**Answer: C**

**QUESTION 51**

You have an enterprise certification authority (CA) named CA1. You have a certificate template named UserAutoEnroll that is based on the User certificate template. Domain users are configured to autoenroll for UserAutoEnroll. A user named User1 has an email address defined in Active Directory. A user named User2 does not have an email address defined in Active Directory. You discover that User1 was issued a certificate based on UserAutoEnroll template automatically. A request by user2 for a certificate based on the UserAutoEnroll template fails. You need to ensure that all users can autoenroll for certificated based on the UserAutoEnroll template. Which setting should you configure from the properties on the UserAutoEnroll certificate template?

- A. Issuance Requirements
- B. Request Handling
- C. Cryptography
- D. Subject Name

**Answer: D**

**QUESTION 52**

You are configuring AD FS. Which server should you deploy on your organization's perimeter network?

- A. Web application proxy
- B. Relying-party server
- C. Federation server
- D. Claims-provider server

**Answer: A**

**QUESTION 53**

Which of the following CA types would you deploy if you wanted to deploy a CA at the top of a hierarchy that could issue signing certificates to other CAs and which would be taken offline if not issuing, renewing, or revoking signing certificates?

- A. Enterprise root
- B. Enterprise subordinate
- C. Standalone root
- D. Standalone subordinate

**Answer: C**

**QUESTION 54**

You need to ensure that clients will check at least every 30 minutes as to whether a certificate has been revoked. Which of the following should you configure to accomplish this goal?

- A. Key recovery agent
- B. CRL publication interval
- C. Delta CRL publication interval
- D. Certificate templates

**Answer: C**

**QUESTION 55**

Your network contains an Active Directory forest named contoso.com. Users frequently access the website of an external partner company. The URL of the website is <http://partners.adatum.com>. The partner company informs you that it will perform maintenance on its Web server and that the IP addresses of the Web server will change. After the change is complete, the users on your internal network report that they fail to access the website. However, some users who work from home report that they can access the website. You need to ensure that your DNS servers can resolve partners.adatum.com to the correct IP address immediately. What should you do?

- A. Run `dnscmd` and specify the `CacheLockingPercent` parameter.
- B. Run `Set-DnsServerGlobalQueryBlockList`.
- C. Run `ipconfig` and specify the `Renew` parameter.
- D. Run `Set-DnsServerCache`.

**Answer: D**

**QUESTION 56**

Your network contains an Active Directory domain named contoso.com. Domain users use smart cards to sign in to their client computer. Some users report that it takes a long time to sign in to their computer and that the logon attempt times out, so they must restart the sign in process. You discover that the issues to checking the certificate revocation list (CRL) of the smart card certificates. You need to resolve the issue without diminishing the security of the smart card logons. What should you do?

- A. From the properties of the smart card's certificate template, modify the Request Handling settings.
- B. From the properties of the smart card's certificate template, modify the Issuance Requirements settings.
- C. Deactivate certificate revocation checks on the computers.
- D. Implement an Online Certification Status Protocol (OCSP) responder.

**Answer: D**

**QUESTION 57**

**Note: This question is part of a series of questions that present the same scenario. Each question in the series contains a unique solution that might meet the stated goals. Some question sets might have more than one correct solution, while others might not have a correct solution. After you answer a question in this section, you will NOT be able to return to it. As a result, these questions will not appear in the review screen.**

You deploy a new Active Directory forest. You need to ensure that you can create a group Managed Service Account (gMSA) for multiple member servers.

Solution: From Windows PowerShell on a domain controller, you run the `Set-KdsConfiguration`

cmdlet.

Does this meet the goal?

- A. Yes
- B. No

**Answer: B**

#### QUESTION 58

**Note:** This question is part of a series of questions that use the same scenario. For your convenience, the scenario is repeated in each question. Each question presents a different goal and answer choices, but the text of the scenario is exactly the same in each question in this series.

##### **Start of repeated scenario.**

You work for a company named Contoso, Ltd. The network contains an Active Directory forest named contoso.com. A forest trust exists between contoso.com and an Active Directory forest named adatum.com. The contoso.com forest contains the objects configured as shown in the following table.

Object name	Object type	Group scope	Group type
User1	User	Not applicable	Not applicable
User2	User	Not applicable	Not applicable
Computer1	Computer	Not applicable	Not applicable
Group1	Group	Domain local	Security
Group2	Group	Domain local	Security
Group3	Group	Universal	Security
Group4	Group	Global	Security
Group5	Group	Universal	Security

Group1 and Group2 contain only user accounts. Contoso hires a new remote user named User3. User3 will work from home and will use a computer named Computer3 that runs Windows 10. Computer3 is currently in a workgroup. An administrator named Admin1 is a member of the Domain Admins group in the contoso.com domain. From Active Directory Users and Computers, you create an organizational unit (OU) named OU1 in the contoso.com domain, and then you create a contact named Contact1 in OU1. An administrator of the adatum.com domain runs the Set-ADUser cmdlet to configure a user named User1 to have a user logon name of user1@litwareinc.com.

##### **End of repeated scenario.**

You need to ensure that Admin1 can convert Group1 to a global group. What should you do?

- A. Add Admin1 to the Enterprise Admin group.
- B. Remove all the member from Group1.
- C. Modify the Security settings of Group1.
- D. Convert Group1 to a universal security group.

**Answer: B**

#### QUESTION 59

You have an Active Directory Rights Management Services (AD RMS) server named RMS1. Multiple documents are protected by using RMS1. RMS1 fails and cannot be recovered. You install the AD RMS server role on a new server named RMS2. You restore the AD RMS database from RMS1 to RMS2. Users report that they fail to open the protected documents and to protect new documents. You need to ensure that the users can access the protected content. What should you do?

- A. From Active Directory Rights Management, update the Service Connection Point (SCP) for RMS1.
- B. From DNS, create an alias (CNAME) record for RMS2.
- C. From DNS, modify the service location (SRV) record for RMS1.
- D. From RMS2, register a service principal name (SPN) in Active Directory.

**Answer: D**

#### QUESTION 60

**Note: This question is part of a series of questions that use the same or similar answer choices. An answer choice may be correct for more than one question in the series. Each question is independent of the other questions in this series. Information and details provided in a question apply only to that question.**

Your network contains an Active Directory domain named contoso.com. You recently deleted 5,000 objects from the Active Directory database. You need to reduce the amount of disk space used to store the Active Directory database on a domain controller.

- A. Dsadd quota
- B. Dsmode
- C. Active Directory Administrative Center
- D. Dscls
- E. Domain
- F. Active Directory Users and Computers
- G. Ntdsutil
- H. Group Policy Management Console

**Answer: G**

#### QUESTION 61

Your network contains an Active Directory domain named contoso.com. The domain contains an enterprise certification authority (CA) named CA1. You duplicate the computer certificate template, and you name the template Cont\_Computers. You need to ensure that all of the certificates issued based on Cont\_Computers have a key size of 4,096 bits. What should you do?

- A. From the properties of CA1, modify the Security settings.
- B. From the properties of CA1, modify the Request Handling settings.
- C. From the properties of the computer template, modify the Key Attestation settings.
- D. From the properties of Cont\_Computers, modify the Cryptography settings.

**Answer: C**

#### QUESTION 62

**Note: This question is part of a series of questions that present the same scenario. Each question in the series contains a unique solution that might meet the stated goals. Some question sets might have more than one correct solution, while others might not have a correct solution. After you answer a question in this section, you will NOT be able to return to it. As a result, these questions will not appear in the review screen.**

You have a server named Web1 that runs Windows Server 2016. You need to list all the SSL certificates on Web1 that will expire during the next 60 days.

Solution: You run the following command:

```
Get-ChildItem Cert:\LocalMachine\My |? {$_.NotAfter -lt (Get-Date).AddDays(60)}
```

Does this meet the goal?

- A. Yes
- B. No

**Answer: B**

**QUESTION 63**

Your network contains an Active Directory domain named contoso.com. The domain contains a user named User1 and an organizational unit (OU) named OU1. You create a Group Policy object (GPO) named GPO1. You need to ensure that User1 can link GPO1 to OU1. What should you do?

- A. Modify the security setting of User1.
- B. Add User1 to the Group Policy Creator Owner group.
- C. Modify the security setting of OU1.
- D. Modify the security setting of GPO1.

**Answer: D**

**QUESTION 64**

**Note: This question is part of a series of questions that present the same scenario. Each question in the series contains a unique solution that might meet the stated goals. Some question sets might have more than one correct solution, while others might not have a correct solution. After you answer a question in this section, you will NOT be able to return to it. As a result, these questions will not appear in the review screen.**

You deploy a new Active Directory forest. You need to ensure that you can create a group Managed Service Account (gMSA) for multiple member servers.

Solution: You configure Kerberos constrained delegation on the computer account of each member server.

Does this meet the goal?

- A. Yes
- B. No

**Answer: B**

**QUESTION 65**

**Note: This question is part of a series of questions that present the same scenario. Each question in the series contains a unique solution that might meet the stated goals. Some question sets might have more than one correct solution, while others might not have a correct solution. After you answer a question in this section, you will NOT be able to return to it. As a result, these questions will not appear in the review screen.**

Your network contains an Active Directory domain named contoso.com. The domain contains a DNS server named Server1. All client computers run Windows 10. On Server1, you have the following zone configuration:

ZoneName	ZoneType	IsAutoCreated	IsDnsIntegrated	IsReverseLookupZone	IsSigned
_nsdcs.contoso.com	Primary	False	True	False	False
0.in-addr.arpa	Primary	True	False	True	False
127.in-addr.arpa	Primary	True	False	True	False
255.in-addr.arpa	Primary	True	False	True	False
adatum.com	Forwarder	False	False	False	False
contoso.com	Primary	False	True	False	False
fabrikam.com	Primary	False	True	False	True
TrustAnchors	Primary	False	True	False	False

You need to ensure that all of the client computers in the domain perform DNSSEC validation for the fabrikam.com namespace.

Solution: From a Group Policy object (GPO) in the domain, you add a rule to the Name Resolution Policy Table (NRPT).

Does this meet the goal?

- A. Yes
- B. No

**Answer: A**

**Explanation:**

The NRPT stores configurations and settings that are used to deploy DNS Security Extensions (DNSSEC), and also stores information related to DirectAccess, a remote access technology.

**Note:**

The Name Resolution Policy Table (NRPT) is a new feature available in Windows Server 2008 R2. The NRPT is a table that contains rules you can configure to specify DNS settings or special behavior for names or namespaces. When performing DNS name resolution, the DNS Client service checks the NRPT before sending a DNS query. If a DNS query or response matches an entry in the NRPT, it is handled according to settings in the policy. Queries and responses that do not match an NRPT entry are processed normally.

[https://technet.microsoft.com/en-us/library/ee649207\(v=ws.10\).aspx](https://technet.microsoft.com/en-us/library/ee649207(v=ws.10).aspx)

#### QUESTION 66

You network contains an Active Directory domain named contoso.com. The domain contains an Active Directory Federation Services (AD FS) server named ADFS1, a Web Application Proxy server named WAP1, and a web server named Web1. You need to publish a website on Web1 by using the Web Application Proxy. Users will authenticate by using OAuth2 preauthentication. What should you do first?

- A. On Web1, add site bindings.
- B. On Web1, add handler mappings.
- C. On ADFS1, enable an endpoint.
- D. On ADFS1, add a claims provider trust.

**Answer: D**

#### QUESTION 67

Your network contains an Active Directory domain named contoso.com. The domain contains five domain controllers. You have a branch office that has a local support technician named Tech1. Tech1 installs Windows Server 2016 on a server named RODC1 in a workgroup. You need Tech1 to deploy RODC1 as a read-only domain controller (RODC) in the contoso.com domain. Which three actions should you perform? (Each correct answer presents part of the solution. Choose three.)



- A. Instruct Tech1 to run the Active Directory Domain Services Configuration Wizard.
- B. Create an RODC computer account by using Active Administrative Center.
- C. Instruct Tech1 to run dcpromo.exe on RODC1.
- D. Instruct Tech1 to install the Active Directory Domain Services server role on RODC1.
- E. Modify the permissions of the Domain Controllers organizational unit (OU).

**Answer:** ACD

**QUESTION 68**

Your network contains an Active Directory forest. The forest functional level is Windows Server 2016. You have a failover cluster named Cluster1. Cluster1 has two nodes named Server1 and Server2. All the optional features in Active Directory are enabled. A junior administrator accidentally deletes the computer object named Cluster1. You discover that Cluster1 is offline. You need to restore the operation of Cluster1 in the least amount of time possible. What should you do?

- A. Run the Enable-ADAccount cmdlet from Windows PowerShell.
- B. Perform an authoritative restore by running ntdutil.exe.
- C. Perform a tombstone reanimation by running ldp.exe.
- D. Recover a deleted object from the Active Directory Recycle Bin.

**Answer:** D

**QUESTION 69**

**Note: This question is part of a series of questions that use the same or similar answer choices. An answer choice may be correct for more than one question in the series. Each question is independent of the other questions in this series. Information and details provided in a question apply only to that question.**

Your network contains an Active Directory domain named contoso.com. The domain functional level is Windows Server 2012 R2. Your company hires a new security administrator to manage sensitive user data. You create a user account named Security1 for the security administrator. You need to ensure that the password for Security1 has at least 12 characters and is modified every 10 days. The solution must apply to Security1 only. Which tool should you use?

- A. Dsadd quota
- B. Dsmode
- C. Active Directory Administrative Center
- D. Dsacis
- E. Dsmain
- F. Active Directory Users and Computers
- G. Ntdsutil
- H. Group Policy Management Console

**Answer:** F

**QUESTION 70**

Your network contains an Active Directory domain. All client computers run Windows 10. A client computer named Computer1 was in storage for five months and was unused during that time. You attempt to sign in to the domain from Computer1 and receive an error message. You need to ensure that you can sign in to the domain from Computer1. What should you do?

- A. Unjoin Computer1 from the domain, and then join the computer to the domain.

- B. From Active Directory Administrative Center, reset the computer account of Computer1.
- C. From Active Directory Administrative Center, disable Computer1, and then enable the computer account of Computer1.
- D. From Active Directory Users and Computers, run the Delegation of Control Wizard.

**Answer: B**

**QUESTION 71**

You network contains an active Directory domain. The domain contains 20 domain controllers. You discover that some Group Policy objects (GPOs) are not being applied by all the domain controllers. You need to verify whether GPOs replicate successfully to all the domain controllers. What should you do?

- A. Set BurFlags in the registry, and then restart the File Replication Service (FRS).  
Run dcdiag.exe for each domain controller.
- B. Set BurFlags in the registry, and then restart the File Replication Service (FRS).  
View the Directory Service event log.
- C. From Group Policy Management, view the Status tab for the domain.
- D. Run repadmin.exe for each GPO.

**Answer: D**

**QUESTION 72**

Your company has a marketing department and a security department. The network contains an Active Directory domain named contoso.com. The domain contains an enterprise certification authority (CA). You have two organizational units (OUs) named MKT\_UsersOU and MKT\_ComputersOU. MKT\_UsersOU contains the user accounts for the users in the marketing department. MKT\_ComputersOU contains the computer accounts for the computers in the marketing department. A Group policy object (GPO) named GPO1 is linked to MKT\_UsersOU. A GPO named GPO2 linked to MKT\_ComputersOU. You plan to deploy a web application for the marketing department users. The application will require certificates for authentication. The security department configures the CA to support the planned deployment. You need to ensure that the web application can authenticate the marketing department users. What should you do?

- A. From the User Configuration node of GPO1, create an Internet Setting preference.
- B. From the User Configuration node of GPO1, configure the Certificate Services Client - Auto enrollment settings.
- C. From the Computer Configuration node of GPO2, configure the Certificate Services Client - Certificate Enrollment Policy settings.
- D. From the Computer Configuration node of GPO2, create the Automatic Certificate Request Settings.

**Answer: A**

**QUESTION 73**

**Note: This question is part of a series of questions that use the same or similar answer choices. An answer choice may be correct for more than one question in the series. Each question is independent of the other questions in this series. Information and details provided in a question apply only to that question.**

Your network contains an Active Directory domain named contoso.com. The domain contains a domain controller named DC1 that runs Windows Server 2016. You need to create a snapshot of the Active Directory database on DC1. Which tool should you use?

- A. Dsadd quota
- B. Dsmmod

- C. Active Directory Administrative Center
- D. DsacIs
- E. Dsmain
- F. Active Directory Users and Computers
- G. Ntdsutil
- H. Group Policy Management Console

**Answer: E**

#### QUESTION 74

**Note: This question is part of a series of questions that present the same scenario. Each question in the series contains a unique solution that might meet the stated goals. Some question sets might have more than one correct solution, while others might not have a correct solution. After you answer a question in this section, you will NOT be able to return to it. As a result, these questions will not appear in the review screen.**

Your network contains an Active Directory domain named contoso.com. The domain contains a server named Server1 that runs Windows Server 2016. The Computer account for Server1 is in organizational unit (OU) named OU1. You create a Group Policy object (GPO) named GPO1 and link GPO1 to OU1. You need to add a domain user named user1 to the local Administrators group on Server1.

Solution: From the Computer Configuration node of GPO1, you configure the Restricted Groups settings.

Does this meet the goal?

- A. Yes
- B. No

**Answer: B**

#### QUESTION 75

The network contains an Active Directory forest named contoso.com. The forest contains three domain controllers configured as shown in the following table:

Server name	Active Directory site
Server1	Montreal
Server2	Montreal
Server3	Seattle

The company physically relocates Server2 from the Montreal office to the Seattle office. You discover that both Server1 and Server2 authenticate users who sign in to the client computers in the Montreal office. Only Server3 authenticates users who sign in to the computers in the Seattle office. You need to ensure that Server2 authenticates the users in the Seattle office during normal network operations. What should you do?

- A. From Windows PowerShell, run the Set-ADReplicationSite cmdlet.
- B. From Active Directory Users and Computers, modify the Location Property of Server2.
- C. From Network Connections on Server2, modify the Internet Protocol Version 4 (TCP/IPv4) configuration.
- D. From Windows PowerShell, run the Move-ADDirectoryServer cmdlet.

**Answer: A**

#### QUESTION 76

You have an enterprise certification authority (CA). You create a global security group named

Group1. You need to provide members of Group1 with the ability to issue and manage certificates. The solution must prevent the Group1 members from managing certificates requested by members of the Domain Admins group. Which two actions should you perform? (Each correct answer presents part of the solution. Choose two.)

- A. From the CA properties, modify the Policy Module settings.
- B. From the Certificate Templates console, modify the Security settings of the Administrator certificate template.
- C. From the CA properties, modify the security settings.
- D. From the CA properties, modify the Enrollment Agents settings.
- E. From the CA properties, modify the Certificate Managers settings.
- F. From the Certificate Templates console, modify the Security settings of the User certificate template.

**Answer: AE**

#### **QUESTION 77**

.....

#### **QUESTION 171**

Your network contains an Active Directory domain named contoso.com. You deploy a standalone root certification authority (CA) named CA1. You need to auto enroll domain computers for certificates by using a custom certificate template. What should you do first?

- A. Modify the Policy Module for CA1.
- B. Modify the Exit Module for CA1.
- C. Install a standalone subordinate CA.
- D. Install an enterprise subordinate CA.

**Answer: .....**

#### **QUESTION 172**

Your company has an office in Montreal. The network contains an Active Directory domain named contoso.com. You have an organizational unit (OU) named Montreal that contains all of the users accounts for the users in the Montreal office. An office manager in the Montreal office knows each user personally. You need to ensure that the office manager can provide the users with a new password if the users forget their password. What should you do?

- A. From the Security settings of the Montreal OU, assign the office manager the Reset Password permission.
- B. From the Security settings of each user account in the Montreal OU, assign the office manager the Change Password permission.
- C. Create a Group Policy object (GPO) and link the GPO to the OU of the domain.  
Filter the GPO to the Montreal users.  
Assign the office manager the Apply Group Policy permission on the GPO.  
Configure the Password Policy settings of the GPO.
- D. Create a Group Policy object (GPO) and link the GPO to the Montreal OU.  
Assign the office manager the Apply Group Policy permission on the GPO.  
Configure the Password Policy settings of the GPO.

**Answer: .....**

#### **QUESTION 173**

Your network contains an Active Directory domain named contoso.com. The domain contains a read-only domain controller (RODC) named RODC1. You need to retrieve a list of accounts that have their password cached on RODC1. Which command should you run?

- A. netdom.exe
- B. ntdsutil.exe
- C. repadmin.exe
- D. dcdiag.exe

**Answer: .....**

**QUESTION 174**

Your network contains an Active Directory forest named contoso.com. The forest contains 10 domains. The root domain contains a global catalog server named DC1. You remove the global catalog server role from DC1. You need to decrease the size of the Active Directory database on DC1.

Solution: You restart DC1 in Safe Mode. You run ntdsutil.exe, use the files option, and then restart DC1.

Does this meet the goal?

- A. Yes
- B. No

**Answer: .....**

**QUESTION 175**

Your network contains an Active Directory domain named contoso.com. The domain contains a user named User1, a group named Group1, and an Organizational unit (OU) named OU1. You need to enable User1 to link Group Policies to OU1.

Solution: From Active Directory Users and Computers, you add User1 to the Group Policy Creator Owner group.

Does this meet the goal?

- A. Yes
- B. No

**Answer: .....**

**QUESTION 176**

Your network contains an Active Directory domain named contoso.com. All users are in an organizational unit (OU) named Corp\_Users. You plan to modify the description of all the users who have a string of 514 in their mobile phone number. You need to view a list of the users that will be modified. What should you run?

- A. `Get-APUser-Filter "mobilePhone-Like '*514*'"`
- B. `Get-ADOrganizationalUnit-LDAPFilter "(mobilePhone='*514*')"`
- C. `Get-ADOrganizationalUnit-Filter "mobilePhone-Like '*514*'"`
- D. `Get-ADUser-LDAPFilter "(mobilePhone='*514*')"`

**Answer: .....**

**QUESTION 177**

A technician named Tech1 is assigned the task of joining the laptops to the domain. The computer accounts of each laptop must be in an organizational unit (OU) that is associated to the department of the user who will use that laptop. The laptop names must start with four characters indicating the department followed by a four-digit number. Tech1 is a member of the Domain Users group only.

Tech1 has the administrator logon credentials for all the laptops. You need Tech1 to join the laptops to the domain. The solution must ensure that the laptops are named correctly, and that the computer accounts of the laptops are in the correct OUs.

Solution: You instruct Tech1 to sign in to each laptop, to rename each laptop by using System in Control Panel, and then to join each laptop to the domain by using the Netdom join command.

Does this meet the goal?

- A. Yes
- B. No

**Answer: .....**

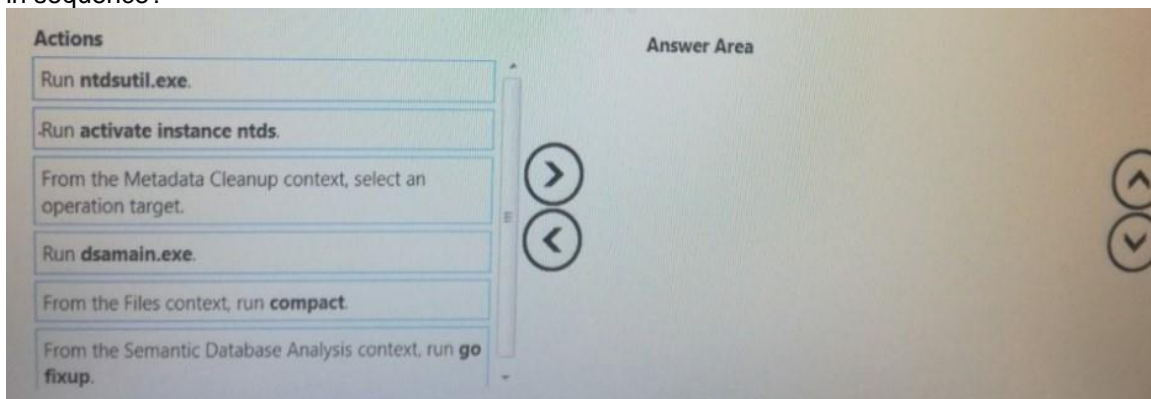
### QUESTION 178

.....

### QUESTION 181

#### Drag and Drop

Your network contains an Active Directory domain. The domain contains a domain controller named DC1 that runs Windows Server 2016. You start DC1 in Directory Services Restore Mode (DSRM). You need to compact the Active Directory database on DC1. Which three action should you perform in sequence?



**Answer:**

.....

### QUESTION 186

#### Hotspot

Your network contains an Active Directory forest named contoso.com. You need to add a new domain named fabrikam.com to the forest. What command should you run?

#### Answer Area

<div> <div></div> <div>▼</div> </div> <div> <div>-DomainType</div> <div> <div>▼</div> <div></div> </div> </div>	<div> <div></div> <div>▼</div> </div> <div> <div>TreeDomain</div> <div>ChildDomain</div> </div>
<div> <div>Install-ADDSDomain</div> <div>Install-ADDSDomainControler</div> <div>Install-ADDSDForest</div> </div>	

`-InstallDns:$true -NewDomainName fabrikam.com -ParentDomainName contoso.com`

**Answer:**



.....  
**QUESTION 187**

**Hotspot**

Your network contains an Active Directory forest. The forest contains two domain controllers named DC1 and DC2 that run Windows Server 2016. DC1 holds all of the operations master roles. DC1 experiences a hardware failure. You plan to use an automated process that will create 1,000 user accounts. You need to ensure that the automated process can complete successfully. Which command should you run?

**Answer Area**

▼	-identity "DC2" -OperationMasterRole
Move-ADDirectoryServerOperationMasterRole ntdsutil	

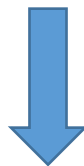
▼	
InfrastructureMaster	
PDCEmulator	
RIDMaster	
SchemaMaster	

▼	
-Force	
Seize pdc	

**Answer:**

.....

**Get Complete Version Exam 70-742 Dumps with VCE and PDF Here**



<https://www.passleader.com/70-742.html>