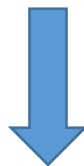


Microsoft MCSE Certification 70-345 Exam



- **Vendor: Microsoft**
- **Exam Code: 70-345**
- **Exam Name: Designing and Deploying Microsoft Exchange Server 2016**

Get Complete Version Exam 70-345 Dumps with VCE and PDF Here



<https://www.passleader.com/70-345.html>

Case Study 1 – Fabrikam, Inc. (Question 1 - Question 7)

Overview

Fabrikam, Inc. is an international manufacturing company that has 5,000 employees. The company has sales, marketing research and human resources departments. Fabrikam has two main offices and three branch offices. The main offices are located in New York and London. The branch offices are located in Seattle, Montreal, and Paris. The offices connect to each other by using a WAN link. Each office connects directly to the Internet. The WAN connections from the main offices to the branch offices are reliable.

Existing Environment

Exchange Environment

The Exchange Server organization contains servers that have either Exchange Server 2010 or Exchange Server 2013 installed. Each main office contains two Exchange Server 2013 servers. Each branch office contains one Exchange Server 2010 server. MX records are configured to deliver email to the offices in New York and London. Email is delivered to the London office only if the New York office is unavailable. Each office is configured to use a separate namespace for client access. The New York office is configured to use a namespace of mail.fabrikam.com. The servers in the New York and London offices are members of a database availability group (DAG). Each mailbox database in the New York and London offices has three copies. The technical support staff in the branch offices have administrative access to the existing Exchange servers and are assigned Organization Management permissions. Users from the sales department frequently send email messages that contain the Social Security number of customers in the United States.

Problem Statements

Fabrikam identifies the following issues on the network:

- Users in the Paris office report that when launching Microsoft Outlook, they receive a security alert indicating a certificate name mismatch. The security alert is not generated when they connect to Outlook Web Access. Users from the other offices do not report receiving the security alert.
- Network administrators report that the mailbox databases in the New York office sometimes activate on the Exchange servers in the London office, resulting in poor performance for the New York office users.

Requirements

Planned Changes

Fabrikam plans to implement the following changes to the network:

- Upgrade the organization to Exchange Server 2016 during the next six months.
- Enable online document viewing and editing from Outlook on the web.

High Availability Requirements

Fabrikam identifies the following high-availability requirements for the planned deployment:

- Mailbox databases that contain mailboxes for the New York office users must only be activated on the servers in the London office manually.
- All client access connections to the London and New York offices must use load-balanced namespaces. The load balancing mechanism must perform health checks.

Security and compliance requirements

Fabrikam identifies the following security and compliance requirements:

- After the planned upgrade, the maximum mailbox size must be 5 GB. Administrators from the branch offices must be able to view the mailbox properties and reset the passwords of the users, but must be prevented from changing the mailbox database configurations.
- Users who are involved in legal disputes with customers must be prevented from permanently deleting email messages pertaining to the dispute. The users must be able to delete all other messages permanently.
- If a user enters a Social Security number in an email message addressed to an external recipient, the user must receive a notification before

sending the message. If the user sends the message, the message must not be delivered. A compliance officer must be notified of the violation.

Connectivity requirements

Fabrikam identifies the following connectivity requirements:

- Connections for inbound and outbound email must be initiated and terminated from an Edge Transport server in the perimeter network.
- All external client connections from the branch office users must be proxied from the New York office to the branch offices.
- The number of namespaces used for client access must be minimized.

QUESTION 1

You deploy Layer 7 load balancers to the New York and London offices. You are planning the namespace configuration that will be used once you complete the planned upgrade to Exchange Server 2016. You need to recommend a solution to meet the connectivity requirements for the namespaces. What should you recommend?

- A. On the New York office servers, change the internal URLs to mail.fabrikam.com.
- B. On all of the branch office servers, change the external URLs to \$null.
- C. On all of the branch office servers, change the external URLs to mail.fabnkam.com.
- D. On the New York office servers, change the internal URLs to \$null.

Answer: C

QUESTION 2

You need to recommend changes to the messaging infrastructure. The changes must meet the connectivity requirements after the planned upgrade. Which two actions should you recommend? Each correct answer presents part of the solution.

- A. From the Mailbox servers, import the Edge Subscription file.
- B. On the Edge Transport Servers, start Edge Synchronization.
- C. On the Edge Transport servers, import the Edge Subscription file.
- D. On the Edge Transport servers, create an Edge Subscription file.
- E. On the Mailbox servers, restart the Microsoft Exchange Transport service.

Answer: AE

QUESTION 3

You need to recommend changes to the existing environment to meet the high-availability requirements for the mailbox databases. What should you recommend?

- A. Run TheSet-MailBoxDatabasecmdlet.
- B. Run theSet-DatabaseAvailabilityGroupcmdlet.
- C. Run theSet-MailBoxServercmdlet.
- D. Run theSet-MailBoxDatabaseCopycmdlet.

Answer: B

Explanation:

[https://technet.microsoft.com/en-us/library/dd297934\(v=exchg.160\).aspx](https://technet.microsoft.com/en-us/library/dd297934(v=exchg.160).aspx)

QUESTION 4

You begin to implement the Exchange Server 2016 servers and plan to decommission the Exchange Server 2013 servers during the next six months. You need to recommend which actions must be performed to support the planned changes for document collaboration. You install

Microsoft Office Online Server on a new server. Which two cmdlets should you recommend running next? Each correct answer presents part of the solution.

- A. New-OfficeWebAppsFarm
- B. Set-PartnerApplication
- C. Set-MailboxServer
- D. New-OfficeWebAppsHost
- E. Set-OrganizationConfig

Answer: AC

QUESTION 5

You need to recommend a solution for the users involved in the legal disputes. What should you include in the recommendation?

- A. a journal rule
- B. an Outlook protection rule
- C. an in-place Hold
- D. a Litigation Hold

Answer: C

Explanation:

[https://technet.microsoft.com/en-us/library/ff637980\(v=exchg.160\).aspx](https://technet.microsoft.com/en-us/library/ff637980(v=exchg.160).aspx)

QUESTION 6

Hotspot Question

You need to configure a data loss prevention (DLP) policy to meet the compliance and security requirements. How should you configure the policy rule? To answer, select the appropriate options in the answer area.

Apply this rule if...

	▼
The recipient is outside of the organization. The message properties include this classification.	

And...

	▼
The recipient is outside of the organization. The message contains sensitive information.	

Do the following...

	▼
Add the sender's manager as a recipient. Generate an incident report and send the report to (email address). Block the message: Reject the message and include an explanation.	

And...

	▼
Redirect the message to (email address). Notify the sender by using a policy tip and block the message. Block the message: Reject the message and include an explanation.	

Answer:

Apply this rule if...

	▼
The recipient is outside of the organization.	
The message properties include this classification.	

And...

	▼
The recipient is outside of the organization.	
The message contains sensitive information.	

Do the following...

	▼
Add the sender's manager as a recipient.	
Generate an incident report and send the report to (email address).	
Block the message: Reject the message and include an explanation.	

And...

	▼
Redirect the message to (email address).	
Notify the sender by using a policy tip and block the message.	
Block the message: Reject the message and include an explanation.	

QUESTION 7

You need to recommend changes to the existing environment to meet the high-availability requirements for the mailbox databases. What should you recommend?

- A. Run the Suspend-MailboxDatabaseCopy cmdlet.
- B. Run the Update-MailboxDatabaseCopy cmdlet.
- C. Deploy a file share witness to a branch office.
- D. Modify the cluster resource properties.

Answer: D

Case Study 2 - Relecloud (Question 8 - Question 12)

Existing Environment

Directory Environment

The network contains a single Active Directory forest named relecloud.com. The forest contains a single domain and a single Active Directory site. All servers run Windows Server 2012 R2 and are members of the domain. All client computers run Windows 10 and are members of the domain. The Active Directory forest is prepared for Exchange Server 2016.

Exchange Environment

Relecloud has an Exchange Server 2013 Service Pack 1 (SP1) organization. The organization contains six servers. The servers are configured as shown in the following table.

Server Name	Role
EX1	Mailbox server
EX2	Mailbox server
EX3	Mailbox server Client Access Server
EX4	Mailbox server Client Access Server
EX5	Client Access Server
EdgeEX	Edge Transport Server

The organization has the following configurations:

- EX1, EX2, and EX3 are members of a database availability group (DAG) named DAG1.
- Edge Synchronization is configured for the Active Directory site.
- All client computers have Microsoft Outlook 2013 SP1 installed.
- All inbound and outbound mail flow is routed through EdgeEx.
- Antispam transport agents are configured on EdgeEX.
- Active Directory split permissions are enabled.
- Outlook anywhere is enabled.

Developers are Relecloud develop applications that send email notifications. These notifications are sent by using an SMTP client.

Requirements

Planned Changes

Relecloud plans to upgrade all of the Mailbox and Client Access servers to Exchange Server 2016. The servers will host all of the mailboxes in the organization. The SMTP clients used by the development department users will use the new email servers to relay email messages

Connectivity Requirements

Relecloud identifies the following connectivity requirements:

- The default connection method for the Outlook clients must be MAPI over HTTP.
- All Exchange ActiveSync users must be prevented from sending email messages that are larger than 1 MB.

Compliance Requirements

Relecloud identifies the following connectivity requirements:

- Prevent all users in the organization from deleting email messages that contain the word RelecloudFutures.
- Log all of the details that relate to the creation of new mailboxes.

Availability Requirements

Relecloud identifies the following availability requirements:

- Implement a new Exchange Server 2016 DAG.
- Maintain multiple copies of the mailbox information during the upgrade process to Exchange Server 2016.

QUESTION 8

You are planning the deployment of the Exchange servers. You need to recommend which

configurations must be performed after the installation of Exchange Server 2016 to ensure that the users can access the mailboxes without receiving error messages. Which two actions should you recommend? Each correct answer presents part of the solution.

- A. Add the new server to the Exchange Servers group.
- B. Create a Send Connector.
- C. Import the certificate from EX3 and assign the certificate.
- D. Configure the virtual directory URLs.
- E. Create a Receive Connector.

Answer: CD

Explanation:

[https://technet.microsoft.com/EN-US/librarv/mt634322\(v=exchg.160\).aspx](https://technet.microsoft.com/EN-US/librarv/mt634322(v=exchg.160).aspx)

QUESTION 9

You need to meet the connectivity requirement for the Exchange ActiveSync clients after the planned upgrade. What should you do?

- A. Modify the EdgeTransport.exe.config file
- B. Run the Set-TransportConfig cmdlet
- C. Run the Set-ActiveSyncMailboxPolicy cmdlet
- D. Modify the Web.config file

Answer: D

Explanation:

[https://technet.microsoft.com/en-us/library/hh529949\(v=exchg.150\).aspx](https://technet.microsoft.com/en-us/library/hh529949(v=exchg.150).aspx)

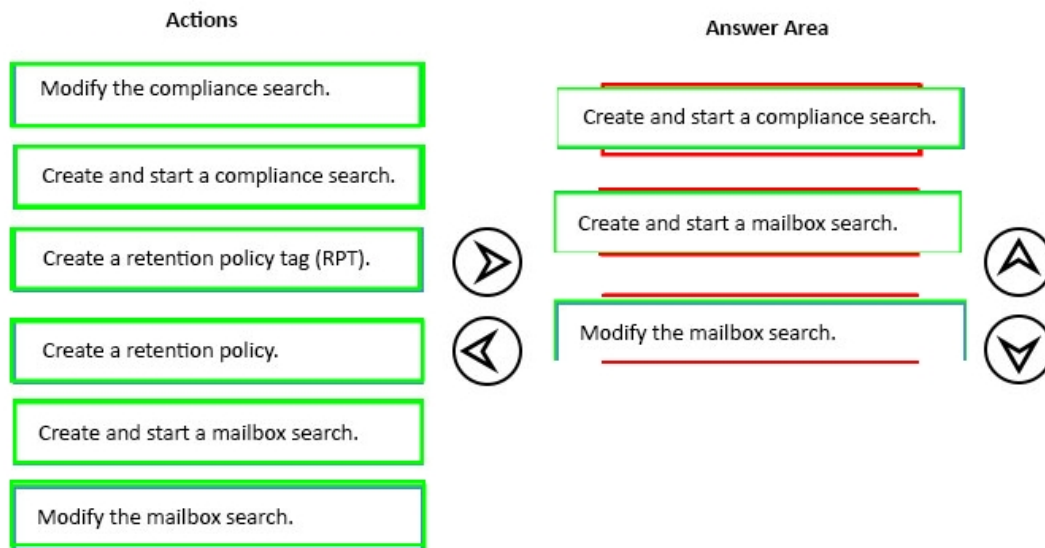
QUESTION 10

Drag and Drop Question

You need to prevent all of the users from deleting certain email messages after the planned upgrade. The solution must meet the compliance requirements. Which three actions should you perform in sequence? To answer, move the appropriate actions from the list of actions to the answer area and arrange them in the correct order.

Actions		Answer Area	
Modify the compliance search.			
Create and start a compliance search.			
Create a retention policy tag (RPT).	➡		⬆
Create a retention policy.	⬅		⬇
Create and start a mailbox search.			
Modify the mailbox search.			

Answer:



QUESTION 11

After deploying new servers, you configure the development applications to send email notifications by using a new server that runs Exchange Server 2016. You need to reduce the likelihood that the email messages will be identified incorrectly as spam. What should you do?

- A. On the new server run, the Set-TransportConfig cmdlet and specify the-internal/SMTPServersparameter.
- B. Create a new internal relay accepted domain.
- C. Upgrade EdgeEX to Exchange Server 2016.
- D. On the new server run, run the Set-TransportServer cmdlet and specify the-AntiSpamAgentsEnabledar\6let

Answer: A

Explanation:

<http://www.techieshelp.com/exchange-2013-enable-anti-spam/>

QUESTION 12

You need to ensure that members of a group named Relecloudadmins can create user accounts and mailboxes for new employees after the planned upgrade. What should you do first?

- A. Run theNew-ManagementRolecmdlet.
- B. Run theNew-ManagementRoleAssignmentcmdlet.
- C. Run setup.exe and specify the/PrepareDomainparameter.
- D. Run setup.exe and specify the/prepareADparameter.

Answer: B

Explanation:

[https://technet.microsoft.com/en-us/library/dd335193\(v=exchg.160\).aspx](https://technet.microsoft.com/en-us/library/dd335193(v=exchg.160).aspx)

Case Study 3 – Contoso, Ltd. (Question 13 - Question 18)

Overview

General Overview

Contoso. Ltd. is an international company that has 3,000 employees. The company has sales, marketing, research, and human resource departments.

Physical Locations

Contoso has two main offices. The offices are located in New York and Chicago. Each office has a data center. The New York office uses a network subnet of 10.1.0.0/16. The Chicago office uses a network subnet of 10.128.0.0/16. The offices connect to each other by using a WAN link. Each office connects directly to the Internet.

Existing Environment

Active Directory

The network contains an Active Directory forest named contoso.com. The forest contains a single domain. All domain controllers run Windows Server 2012 R2. The forest functional level is Windows Server 2012 R2. The forest contains six domain controllers configured as shown in the following table.

Server name	Office	Global Catalog
DC01	Chicago	YES
DC02	Chicago	YES
DC03	Chicago	NO
DC04	New York	YES
DC05	New York	YES
DC06	New York	YES

The forest is configured as a single Active Directory site. Active Directory administrators manage the Active Directory schema. Exchange Server administrators do not have access to modify the schema. Contoso has deployed Active Directory Rights Management Services (AD RMS).

Current Business Model

Contoso partners with a company names Fabrikam. Inc. on manufacturing initiatives. The partnership between Contoso and Fabrikam requires that both companies share confidential information frequently.

Requirements

Business Goals

Contoso plans to install Exchange Server 2016 to provide messaging services for its users. It must be as easy as possible for the users at Contoso to share free/busy information with the users at Fabrikam. As much as possible. Contoso plans to minimize the costs associated with purchasing hardware and software.

Planned Changes

Contoso plans to implement the following changes before installing Exchange Server 2016:

- Install hardware Network Load Balancing (NLB) in the New York and Chicago offices.
- Implement Microsoft Office Online Servers in the New York and Chicago offices.
- Provide Contoso users with company-approved tablets.

Planned Messaging Infrastructure

You plan to create an Exchange Server 2016 organization named Contoso. You plan to deploy seven servers that will have Exchange Server 2016 installed. The servers will be configured as

shown in the following table.

Server name	Office	Global Catalog
EX01	Chicago	Mailbox server
EX02	Chicago	Mailbox server
EX03	Chicago	Mailbox server
EX04	New York	Mailbox server
EX05	New York	Mailbox server
EX06	New York	Mailbox server
FS1	Chicago	File share witness

All of the servers will be members of a database availability group (DAG) named DAG01.

Client Access Requirements

Contoso identifies the following client access requirements for the planned deployment:

- Users must be able to configure their tablet to synchronize email by using Autodiscover.
- Users must be able to access the Exchange Server organization by using the following names:
 - * Mail.contoso.com
 - * Autodiscover.contoso.com
- Users must be able to access Outlook on the web internally and externally from their tablet.
- Users must be able to access Office Online Server by using the URL of office-online.contoso.com.

Security Requirements

Contoso identifies the following security requirements for the planned deployment:

- Exchange Server mailbox databases must be encrypted while at rest.
- Users must be prevented from using Outlook on the web while they are offline.
- Contoso users must be able to share Calendar details with approved external domains only.
- Email messages sent to the users in the fabrikam.com SMTP domain must be encrypted automatically.
- Whenever possible, client computers must be directed to the same Exchange server for log collection.
- Users must be able to access their mailbox by using Exchange ActiveSync on the company-approved tablets only.
- Email messages sent from the users in the human resources department of Contoso must be protected by using AD RMS, regardless of the mail client.

Availability Requirements

Contoso identifies the following high-availability requirements for the planned deployment:

- Servers must be able to complete a restart without administrative intervention.
- The network load balancer must be able to probe the health of each workload.
- If a data center fails, the databases in the other data center must be

activated automatically.

- Redundant copies of all email messages must exist in the transport pipeline before and after delivery.
- Email messages must be made highly available by the Exchange Server organization before and after delivery.
- If you manually mount the databases following the data center failure, the databases in the failed site must be prevented from mounting automatically.

QUESTION 13

You need to recommend a solution that meets the security requirements for the mailbox databases. What should you include in the recommendation?

- A. Resilient File System (ReFS)
- B. Transparent Data Encryption (TDE)
- C. BitLocker Drive Encryption (BitLocker)
- D. Encrypting File System (EFS)

Answer: C

QUESTION 14

You run the Get-SendConnector cmdlet and you receive the following output.

```
AddressSpaces           : {SMTP:*;1}
AuthenticationCredential :
CloudServicesMailEnabled : False
Comment                 :
ConnectedDomains         : {}
ConnectionInactivityTimeout : 00:10:00
ConnectorType            : Default
DNSRoutingEnabled        : True
DomainSecureEnabled      : False
Enabled                  : True
ErrorPolicies             : Default
ForceHELO                : False
Fqdn                     : smtp.contoso.com
FrontendProxyEnabled      : False
HomeMTA                  : Microsoft MTA
HomeMTAServerID           : EX01
Identity                 : Internet Mail
IgnoreSTARTTLS            : False
IsScopedConnector        : False
IsSmtplibConnector       : True
MaxMessageSize            : 35 MB (36,700,160, bytes)
Name                     : Internet Mail
Port                     : 25
```

```
ProtocolLoggingLevel      : None
RequireOrg                : False
RequireTLS                : False
SmartHostAuthMechanism    : None
SmartHosts                : {}
SmartHostsString          : 
SmtptMaxMessagesPerConnection : 20
SourceIPAddress           : 0.0.0.0
SourceRoutingGroup        : Exchange Routing Group (DWBGZMFD01QNBJR)
SourceTransportServers     : {EX01, EX02}
TlsAuthLevel              : 
TlsCertificateName        : 
TlsDomain                 : 
UseExternalDNSServerEnabled : False
```

You need to recommend which actions are required to secure email connectivity between the contoso.com SMTP domain and the fabrikam.com SMTP domain. Which two actions should you recommend? Each correct answer presents part of the solution.

- A. Import a server certificate that has a subject name of ex01.contoso.com and a subject alternate name of ex02.contoso.com.
- B. Create an Outlook protection rule.
- C. Import a server certificate that has a subject name of smtp.contoso.com.
- D. Configure the TLSSendDomainSecureListparameter for the organization.
- E. Modify the ConnectorTypeparameter for the Send connector.

Answer: CD

Explanation:

[https://technet.microsoft.com/en-gb/library/bb123543\(v=exchg.141\).aspx](https://technet.microsoft.com/en-gb/library/bb123543(v=exchg.141).aspx)

QUESTION 15

You need to recommend a solution that meets the security requirements for mobile devices. Which two objects should you include in the recommendation? Each correct answer presents part of the solution.

- A. a device access rule
- B. a mobile device mailbox policy
- C. a data loss prevention (DLP) policy
- D. an Outlook Web App policy

Answer: AD

Explanation:

<https://technet.microsoft.com/en-us/library/dn792010.aspx>

[https://technet.microsoft.com/en-us/library/dd297989\(v=exchg.160\).aspx](https://technet.microsoft.com/en-us/library/dd297989(v=exchg.160).aspx)

QUESTION 16

Hotspot Question

You need to instruct the Active Directory administrators how to prepare the Active Directory environment to support the planned Exchange Server 2016 deployment. What command should you instruct administrators to run? To answer, select the appropriate options in the answer area.

Answer Area

adprep.exe /AcceptExchangeServerLicenseTerms

/DomainPrep
/ForestPrep
/PrepareAD
/PrepareAllDomains
/PrepareDomain
/PrepareSchema

/OrganizationName "Contoso"
/PrepareDomain contoso.com
/TenantOrganizationConfig "Contoso"

Answer:

Answer Area

adprep.exe /AcceptExchangeServerLicenseTerms

/DomainPrep
/ForestPrep
/PrepareAD
/PrepareAllDomains
/PrepareDomain
/PrepareSchema

/OrganizationName "Contoso"
/PrepareDomain contoso.com
/TenantOrganizationConfig "Contoso"

QUESTION 17

Drag and Drop Question

You need to configure the Exchange Server organization to support the security requirements for Calendar sharing. Which three actions should you perform in sequence? To answer, move the appropriate actions from the list of actions to the answer area and arrange them in the correct order.

Actions

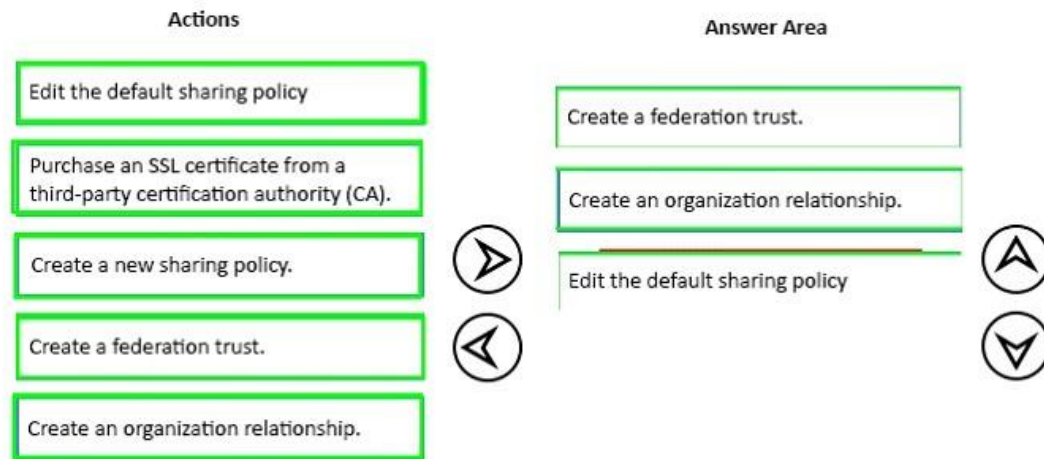
- Edit the default sharing policy
- Purchase an SSL certificate from a third-party certification authority (CA).
- Create a new sharing policy.
- Create a federation trust.
- Create an organization relationship.



Answer Area



Answer:



QUESTION 18

You need to recommend a solution that meets the security requirements for the tablets. Which two objects should you include in the recommendation? Each correct answer presents part of the solution.

- A. a mobile device mailbox policy
- B. an Outlook Web App policy
- C. a data loss prevention (DLP) policy
- D. a device access rule

Answer: BD

Explanation:

Scenario: Users must be able to access Outlook on the web internally and externally from their tablet. Users must be able to configure their tablet to synchronize email by using Autodiscover. Users must be able to access their mailbox by using Exchange ActiveSync on the company-approved tablets only

QUESTION 19

Hotspot Question

You have an Exchange Server organization. The organization contains four servers. The servers configured as shown in the following table.

Server name	Exchange Server version	Role	Configuration
EX1	2013	Client Access Server	Provides MAPI access for a third-party application
EX2	2013	Mailbox Server	Hosts public folders that are accessed by using Microsoft Outlook 2013
EX3	2010	Mailbox Server, Hub Transport server	Filters the content of all email messages from the Internet by using the content filtering agent
EX4	2010	Mailbox server	Provides retention by using managed folders

You plan to upgrade the organization to Exchange Server 2016. You need to identify which servers have functionalities that can be fully achieved by using Exchange Server 2016. What should you identify? To answer, select the appropriate options in the answer area.

All the functionalities in EX01 can be achieved by using Exchange Server 2016:

☐ Yes
☐ No

All the functionalities in EX02 can be achieved by using Exchange Server 2016:

☐ Yes
☐ No

All the functionalities in EX03 can be achieved by using Exchange Server 2016:

☐ Yes
☐ No

All the functionalities in EX04 can be achieved by using Exchange Server 2016:

☐ Yes
☐ No

Answer:

All the functionalities in EX01 can be achieved by using Exchange Server 2016:

☒ Yes
☐ No

All the functionalities in EX02 can be achieved by using Exchange Server 2016:

☒ Yes
☐ No

All the functionalities in EX03 can be achieved by using Exchange Server 2016:

☒ Yes
☐ No

All the functionalities in EX04 can be achieved by using Exchange Server 2016:

☒ Yes
☐ No

QUESTION 20

Drag and Drop Question

You have an Exchange Server 2016 organization. The organization contains 2,000 mailboxes. You need to provide administrators with the ability to perform the following tasks:

- An administrator named Admin1 must be able to create custom message classifications.

- An administrator named Admin2 must be able to create retention tags.

Which management role group should you assign to each administrator? To answer, drag the appropriate role groups to the correct administrators. Each role group may be used once, more than once, or not at all. You may need to drag the split bar between panes or scroll to view content.

Role Groups	Answer Area
Compliance Management	Admin1 Role group
Discovery Management	Admin2 Role group
Recipient Management	
Records Management	

Answer:

Role Groups	Answer Area
Compliance Management	Admin1 Records Management
Discovery Management	Admin2 Records Management
Recipient Management	
Records Management	

QUESTION 21

Hotspot Question

You have an Exchange Server 2016 organization. The organization contains 5,000 mailboxes. All of the users in the organization share their Calendar with the users in two domains named contoso.com and fabrikam.com. You need to prevent the organization users from sharing their Calendar with the users in the contoso.com domain. What command should you run? To answer, select the appropriate options in the answer area.

Answer Area

identity "Default Sharing Policy (DEFAULT)"	-domains contoso.com: CalendarSharingFreeBusySimple -domains fabrikam.com: CalendarSharingFreeBusySimple
---------------------------------------------	-------------------------------------------------------------------------------------------------------------

Answer:

Answer Area

<div>▼</div> <div>Set-CasMailbox Set-Mailbox Set-SharingPolicy</div>	identity "Default Sharing Policy (DEFAULT)"	<div>▼</div> <div>-domains contoso.com: CalendarSharingFreeBusySimple -domains fabrikam.com: CalendarSharingFreeBusySimple</div>
-------------------------------------------------------------------------------------	---------------------------------------------	---------------------------------------------------------------------------------------------------------------------------------------------

QUESTION 22

You have an Exchange Server 2016 organization. The organization contains five Mailbox servers. The servers are members of a database availability group (DAG). All of the databases in the DAG are replicated to all of the members. You plan to perform scheduled maintenance on a Mailbox server named MBX3 that will place the server offline for up to an hour. You need to ensure that any active databases on MBX3 are activated on other DAG members before performing the maintenance. Which cmdlet should you use?

- A. Set-MailboxDatabaseCopy
- B. Stop-DatabaseAvailabilityGroup
- C. Resume-MailboxDatabaseCopy
- D. Set-MailboxServer

Answer: D

QUESTION 23

You have an exchange server 2016 organization. The organization contains a Mailbox server named EX01. EX01 contains a mailbox database named DB01. The volume that contains DB01 fails. You need to perform a dial-tone recovery of the database. What should you create first?

- A. a new Recovery Storage Group
- B. a new mailbox database
- C. a mailbox move request
- D. a mailbox restore request
- E. a lagged database copy

Answer: B

QUESTION 24

You have an Exchange Server 2016 organization. The organization contains several servers. Users in the marketing department often send Information Rights Management (IRM)- protected email messages. The IRM-protected messages are excluded from eDiscovery searches. You need to configure the Exchange Server Organization to ensure that the contents of the mailboxes of the marketing department users are searched for all messages that contain the word ProjectX. The solution must prevent the email messages from being deleted permanently. You user account is a member of the required role group. Which three actions should you perform? Each correct answer present part of the solution.

- A. Run theNew-Mailboxcmdlet
- B. Run theNew-MailboxSearchcmdlet
- C. Run theSet-IRMConfigurationcmdlet
- D. Run theSearch-Mailboxcmdlet
- E. Export the results from the discovery mailbox to a personal folders (PST) file, and then use MicrosoftOutlook to open the PST file
- F. Use Outlook on the web to open the discovery mailbox

Answer: BCE

Explanation:

[https://technet.microsoft.com/en-us/library/dn440164\(v=exchg.160\).aspx?f=255&MSPPErr=-2147217396](https://technet.microsoft.com/en-us/library/dn440164(v=exchg.160).aspx?f=255&MSPPErr=-2147217396)

[https://technet.microsoft.com/en-us/library/dd353189\(v=exchg.160\).aspx](https://technet.microsoft.com/en-us/library/dd353189(v=exchg.160).aspx)

QUESTION 25

Drag and Drop Question

Your company has an Exchange Server 2016 organization. The organization contains three servers and 2,000 mailboxes. The organization audits all access to user mailboxes. The company's security policy has the following requirements:

- Audit the name of each administrator who modifies the Exchange Server organization settings.
- Reduce the amount of audit log information generated by a service account named Service1.
- Create an audit entry when an administrator modifies the permissions of another administrative mailbox.

You need to identify which PowerShell cmdlets must be used to meet the requirements. Which PowerShell cmdlet should you identify for each requirement? To answer, drag the appropriate cmdlets to the correct requirements. Each cmdlet may be used once, more than once or not at all. You may need to drag the split bar between panes or scroll to view content.

Cmdlets	Answer Area
Set-AdminAuditLogConfig	Reduce the amount of audit log information generated by Service 1: <input type="text" value="Cmdlet"/>
Set-MailboxAuditBypassAssociation	Create an Audit entry when an administrator modifies the permissions of another administrative mailbox: <input type="text" value="Cmdlet"/>
Set-OrganizationConfig	Audit the name of each administrator who modifies the Exchange Server organization settings: <input type="text" value="Cmdlet"/>
Write-AdminAuditLog	

Answer:

Cmdlets	Answer Area
Set-AdminAuditLogConfig	Reduce the amount of audit log information generated by Service 1: <input type="text" value="Set-MailboxAuditBypassAssociation"/>
Set-MailboxAuditBypassAssociation	Create an Audit entry when an administrator modifies the permissions of another administrative mailbox: <input type="text" value="Set-AdminAuditLogConfig"/>
Set-OrganizationConfig	Audit the name of each administrator who modifies the Exchange Server organization settings: <input type="text" value="Set-AdminAuditLogConfig"/>
Write-AdminAuditLog	

QUESTION 26

Your company has an Exchange Server 2016 organization. All users have a primary mailbox and archive mailboxes. You create a new retention policy for the users. The policy includes the following types of tags. A default retention policy tag (RPT) applied to the mailbox. The tag is configured to move email messages older than three years to the archive. An RPT applied to the users' Sent Items folder: The tag is configured to move email messages older than one year to the archive.

The corporate retention policy is applied to all of the mailboxes. A user creates a personal tag named Tag1. The personal tag is configured to delete items permanently after 180 days. The user sends an email message that uses Tag1. You need to identify what will occur to the message. What should you identify?

- A. The message will be deleted in six months.
- B. The message will be moved to the archive in one year.
- C. The message will be moved to the archive in one year and deleted six months later.
- D. The message will be moved to the archive in three years.

Answer: A

Explanation:

Personal tags allow your users to determine how long an item should be retained. For example, the mailbox can have a DPT to delete items in seven years, but a user can create an exception for items such as newsletters and automated notifications by applying a personal tag to delete them in three days.

[https://technet.microsoft.com/en-us/library/dd297955\(v=exchg.150\).aspx](https://technet.microsoft.com/en-us/library/dd297955(v=exchg.150).aspx)

QUESTION 27

Hotspot Question

You deploy a server named ex01.contoso.com that has Exchange Server 2016 installed. You need to ensure that when users connect to the URL of <http://ex01.contoso.com>, they access Outlook on the web over a secure connection. How should you configure the Default Web Site? To answer, select appropriate options in the selected area.

Redirect requests to:



Require SSL:



Answer:

Redirect requests to:



Require SSL:



QUESTION 28

Your company has a data center. The data center contains a server that has Exchange Server 2016 and the Mailbox server role installed. Outlook anywhere clients connect to the Mailbox server by using the name outlook.contoso.com. The company plans to open a second data center and to provision a database availability group (DAG) that spans both data centers. You need to ensure that Outlook Anywhere clients can connect if one of the data centers becomes unavailable. What should you add to DNS?

- A. one A record
- B. two TXT records
- C. two SRV records
- D. one MX record

Answer: A

Explanation:

[https://technet.microsoft.com/en-gb/library/dd638104\(v=exchg.150\).aspx?f=255&MSPPErr=-2147217396](https://technet.microsoft.com/en-gb/library/dd638104(v=exchg.150).aspx?f=255&MSPPErr=-2147217396)

QUESTION 29

Hotspot Question

You have an Exchange Server 2016 organization named Contoso. You create an organization relationship with a partner's Exchange Server organization named Fabrikam. The users in Fabrikam can view the free/busy information of all the users in Contoso. You need to ensure that the users in Fabrikam can view the custom Mail Tips configured in Contoso. What command should you run in Contoso? To answer select the appropriate options in the answer area

Answer Area

<div>▼</div> <ul style="list-style-type: none"> Set-IntraOrganizationConnector Set-OrganizationConfig Set-OrganizationRelationship 	"Fabrikam"	<div>▼</div> <ul style="list-style-type: none"> -MailTipsAccessEnabled -MailTipsAccessLevel -MailTipsAccessScope 	<div>▼</div> <ul style="list-style-type: none"> \$True All
---------------------------------------------------------------------------------------------------------------------------------------------------------------------	------------	---------------------------------------------------------------------------------------------------------------------------------------------------	------------------------------------------------------------------------------------

Answer:

Answer Area

<div>▼</div> <ul style="list-style-type: none"> Set-IntraOrganizationConnector Set-OrganizationConfig Set-OrganizationRelationship 	"Fabrikam"	<div>▼</div> <ul style="list-style-type: none"> -MailTipsAccessEnabled -MailTipsAccessLevel -MailTipsAccessScope 	<div>▼</div> <ul style="list-style-type: none"> \$True All
---------------------------------------------------------------------------------------------------------------------------------------------------------------------	------------	---------------------------------------------------------------------------------------------------------------------------------------------------	------------------------------------------------------------------------------------

QUESTION 30

Hotspot Question

You have an exchange server 2016 organization. The organization contains two servers named EX01 and EX02. Both servers are members of a database availability group (DAG) named DAG01. DAG01 contains two mailbox databases named DB01 and DB02. DB01 and DB02 are replicated to all of the members of DAG01.

Name	Status	CopyQueue Length	ReplayQueue Length	LastInspectedLogTime	State
DB01\EX02	FailedAndSuspended	906	0	11/16/2015 9:29:39 AM	Unknown

You run the Get-MailboxDatabaseCopyStatus cmdlet and you receive the following output. Use the drop-down menus to select the answer choice that completes each statement based on the information presented in the output.

If you run the [answer choice] cmdlet, only uncopied transaction logs will be copied from EX01 to EX02.

▼

Add-MailboxDatabaseCopy
Remove-MailboxDatabaseCopy
Resume-MailboxDatabaseCopy
Set-MailboxDatabaseCopy
Update-MailboxDatabaseCopy

If you run the [answer choice] cmdlet, DB02 will be deleted from EX02 and reseeded from EX01.

▼

Add-MailboxDatabaseCopy
Remove-MailboxDatabaseCopy
Resume-MailboxDatabaseCopy
Set-MailboxDatabaseCopy
Update-MailboxDatabaseCopy

Answer:

If you run the [answer choice] cmdlet, only uncopied transaction logs will be copied from EX01 to EX02.

▼

Add-MailboxDatabaseCopy
Remove-MailboxDatabaseCopy
Resume-MailboxDatabaseCopy
Set-MailboxDatabaseCopy
Update-MailboxDatabaseCopy

If you run the [answer choice] cmdlet, DB02 will be deleted from EX02 and reseeded from EX01.

▼

Add-MailboxDatabaseCopy
Remove-MailboxDatabaseCopy
Resume-MailboxDatabaseCopy
Set-MailboxDatabaseCopy
Update-MailboxDatabaseCopy

QUESTION 31

You have an Exchange Server 2016 organization. All users work from a main office and use Microsoft Outlook 2016. You recently ran the Microsoft Office 365 Hybrid Configuration Wizard and moved most of the user mailboxes to Exchange Online. A network administrator reports an increase in the amount of outbound SMTP traffic from the network. You need to reduce the amount of bandwidth utilization for the outbound SMTP traffic. What should you do?

- A. From the Exchange Server organization, create a Receive connector that uses the IP address of Exchange Online as a remote range.

- B. From the public DNS zone, modify the MX record to point to Exchange Online.
- C. From the public DNS zone, modify the SRV record to point to Exchange Online.
- D. From the Exchange Server organization, create a Send connector that uses Exchange Online as an SMTP smart host.

Answer: B

QUESTION 32

Hotspot Question

You have a hybrid Exchange Server 2016 organization. Users use Outlook on the web. All mailboxes currently reside on-premises. You have an internal public key infrastructure (PKI) that uses a certification authority (CA) named CA1. Certificates are issued to users to sign and encrypted email messages. You move a mailbox to Exchange Online and you discover that the mailbox fails to exchange signed or encrypted email messages from the on-premises mailbox users. You need to ensure that all of the mailboxes that were moved to Exchange Online can send encrypted email messages to the on-premises mailboxes. The mailboxes must also be able to receive encrypted email messages from the on-premises mailboxes. You export the required certificates to a file named Export.sst. What command should you run next? To answer, select appropriate options in the answer area.

```
$data=Get-Content Export.sst -Encoding Byte
```

<div><div>Set-OrganizationConfig</div><div>Set-SmimeConfig</div><div>Set-TransportConfig</div></div>	<div><div>OWAAllowUserChoiceOfSigningCertificate</div><div>OWAEncryptionAlgorithms</div><div>OWAForceSMIMEClientUpgrade</div><div>SMIMECertificateIssuingCA</div></div>	\$data
------------------------------------------------------------------------------------------------------	-------------------------------------------------------------------------------------------------------------------------------------------------------------------------	--------

Answer:

```
$data=Get-Content Export.sst -Encoding Byte
```

<div><div>Set-OrganizationConfig</div><div>Set-SmimeConfig</div><div>Set-TransportConfig</div></div>	<div><div>OWAAllowUserChoiceOfSigningCertificate</div><div>OWAEncryptionAlgorithms</div><div>OWAForceSMIMEClientUpgrade</div><div>SMIMECertificateIssuingCA</div></div>	\$data
------------------------------------------------------------------------------------------------------	-------------------------------------------------------------------------------------------------------------------------------------------------------------------------	--------

QUESTION 33

All users connect to their mailbox by using Microsoft Outlook and Outlook on the web. You need to ensure that all of the users are notified before they send an email message to a distribution group named Executives. Which cmdlet should you use?

- A. New-TransportRule

- B. Set-Mailbox
- C. New-PolicyTipConfig
- D. Set-DistributionGroup
- E. Set-DLPPolicy

Answer: A

Explanation:

You can use a transport rule with the condition. The recipient is a member of. This condition matches messages that contain recipients who are members of the specified distribution group. The distribution group can be listed in the To, Cc, or Bcc fields.

QUESTION 34

You need to add a DNS record to provide Autodiscover for each domain. Which type of record should you create in each zone?

- A. PTR
- B. MX
- C. TXT
- D. A

Answer: D

Explanation:

FQDN: autodiscover.contoso.com

DNS record type: A

Value: 172.16.10.11

[https://technet.microsoft.com/en-us/library/mt473798\(v=exchg.150\).aspx](https://technet.microsoft.com/en-us/library/mt473798(v=exchg.150).aspx)

QUESTION 35

Drag and Drop Question

You need to configure the Sender Policy Framework (SPF) for a domain named contoso.com to ensure that only the following senders are authorized to send email for contoso.com:

- Hosts listed in the contoso.com MX records
- IP addresses in the 131.107.1.0/24 subnet.

How should you configure the DNS record for the SPF? To answer, drag the appropriate values to the correct targets. Each value may be used once, more than once, or not at all. You may need to drag the split bar between panes or scroll to view content.

Values	Answer Area
?all	contoso.com IN TXT "v=spf1 Value : Value Value Value"
+all	
-all	
131.107.1.0/24	
A	
contoso.com	
IP4	
MX	

Answer:

Values	Answer Area
?all	contoso.com IN TXT "v=spf1
+all	IP4
-all	: 131.107.1.0/24
131.107.1.0/24	contoso.com
A	-all
contoso.com	"
IP4	
MX	

QUESTION 36

How is the IBM Content Template Catalog delivered for installation?

- A. as an EXE file
- B. as a ZIP file of XML files
- C. as a Web Application Archive file
- D. as a Portal Application Archive file

Answer: D

Explanation:

<https://greenhouse.lotus.com/plugins/plugincatalog.nsf/ass>

QUESTION 37

Hotspot Question

You have an Exchange Server organization. The organization contains four servers. The servers configured as shown in the following table.

Server name	Exchange Server version	Role	Configuration
EX1	2013	Client Access Server	Provides MAPI access for a third-party application
EX2	2013	Mailbox Server	Hosts public folders that are accessed by using Microsoft Outlook 2013
EX3	2010	Mailbox Server, Hub Transport server	Filters the content of all email messages from the Internet by using the content filtering agent
EX4	2010	Mailbox server	Provides retention by using managed folders

You plan to upgrade the organization to Exchange Server 2016. You need to identify which functionalities from the current environment can be implemented in Exchange Server 2016. What should you identify? To answer, select the appropriate options in the answer area

Provide MAPI access for a third-party application:

Host public folders that are accessed by using Microsoft Outlook 2013:

Filter content of all email messages from the Internet by using the content filtering agent:

Provide retention by using managed folders:

Answer:

Provide MAPI access for a third-party application:

Host public folders that are accessed by using Microsoft Outlook 2013:

Filter content of all email messages from the Internet by using the content filtering agent:

Provide retention by using managed folders:

QUESTION 38

Drag and Drop Question

You have an Exchange Server 2016 organization. The organization contains two Mailbox servers. You have a database that is replicated to both servers. The database contains 500 mailboxes. You add new volumes to the Mailbox servers. You need to move all of the mailbox data to the new volumes. The solution must meet the following requirements: Ensure that multiple copies of the mailbox data are available at all times. Minimize downtime for the mailbox users. Which three actions should you perform in sequence? To answer, move the appropriate actions from the list of actions to the answer area and arrange them in the correct order.

Actions

- Remove all of the replicated database copies.
- Create a new database.
- Dismount the replicas of the database.
- Move the database.
- Mount the new database.
- Move the mailboxes.
- Mount the replicas of the database
- Create replicated database copies.

➤

➤

Answer Area

⬆

⬆

Answer:

Actions

- Remove all of the replicated database copies.
- Create a new database.
- Dismount the replicas of the database.
- Move the database.
- Mount the new database.
- Move the mailboxes.
- Mount the replicas of the database
- Create replicated database copies.

➤

➤

Answer Area

Remove all of the replicated database copies.

Move the database.

Create replicated database copies.

⬆

⬆

QUESTION 39

Drag and Drop Question

You have an Exchange Server 2010 organization. The organization has 500 mailboxes and three servers. The servers are configured as shown in the following table.

Server name	Role
EX10MBX	Mailbox Server
EX10CH	Client Access server, Hub Transport server
EX10EDGE	Edge Transport server

EX10EDGE is located in the perimeter network. EX10CH has an Edge Subscription. All Internet mail flows through EX10EDGE. You deploy an Exchange Server 2016 Mailbox server named EX16MBX to the organization. You deploy an Exchange Server 2016 Edge Transport server named

EX16EDGE to the perimeter network. You need to transition all Internet mail to flow through EX16EDGE. The solution must minimize disruptions to the mail flow. Which three actions should you perform in sequence? To answer, move the appropriate actions from the list of actions to the answer area and arrange them in the correct order.

Actions

- Configure the perimeter Firewall to forward HTTPS traffic to EX16EDGE.
- Modify the Edge Subscription on EX10CH.
- Remove the Edge Subscription on EX10CH and EX10EDGE.
- Create an Edge Subscription between EX16EDGE and EX16MBX.
- Configure the perimeter firewall to forward SMTP traffic to EX16EDGE.
- Create an Edge Subscription between EX10EDGE and EX16MBX.



Answer Area



Answer:

Actions

- Configure the perimeter Firewall to forward HTTPS traffic to EX16EDGE.
- Modify the Edge Subscription on EX10CH.
- Remove the Edge Subscription on EX10CH and EX10EDGE.
- Create an Edge Subscription between EX16EDGE and EX16MBX.
- Configure the perimeter firewall to forward SMTP traffic to EX16EDGE.
- Create an Edge Subscription between EX10EDGE and EX16MBX.



Answer Area

- Create an Edge Subscription between EX10EDGE and EX16MBX.
- Configure the perimeter firewall to forward SMTP traffic to EX16EDGE.
- Remove the Edge Subscription on EX10CH and EX10EDGE.



QUESTION 40

You have an Exchange Server 2016 organization. You need to ensure that users in each department download an Offline Address Book (OAB) that only contains the users in their department. The solution must ensure that all of the users can continue to see all the other users in the organization. Which three actions should you perform? Each correct answer presents part of the solution.

- A. Create an OAB for each department.
- B. Modify the properties for each user mailbox.
- C. Create an address book policy (ABP) for each department.
- D. Create an address list for each department.
- E. Modify the properties of the default OAB.
- F. Create an email address policy for each department.

Answer: ABC

QUESTION 41

Hotspot Question

You have an Exchange Server 2016 organization. You have a mailbox database named PF_DB1 that contains a public folder mailbox named PF1. PF1 contains a public folder named Marketing. Three weeks ago, a user deleted the Marketing folder. You restore the database files from the last full backup to a recovery database named R_DB1. You need to recover Marketing folder. What command should you run? To answer, select appropriate options in the answer area.

▼
-SourceStoreMailbox PF1 -SourceDatabase
▼

New-Mailbox
New-MailboxRestoreRequest
New-PublicFolder
New-PublicFolderDatabase
Undo-SoftDeletedMailbox

-TargetMailbox PF1 -AllowLegacyDNMismatch -IncludeFolders "Marketing"

PF_DB1
R_DB1

Answer:

▼
-SourceStoreMailbox PF1 -SourceDatabase
▼

New-Mailbox
New-MailboxRestoreRequest
New-PublicFolder
New-PublicFolderDatabase
Undo-SoftDeletedMailbox

-TargetMailbox PF1 -AllowLegacyDNMismatch -IncludeFolders "Marketing"

PF_DB1
R_DB1

QUESTION 42

Your company has two offices. The offices are located in San Francisco and Los Angeles. Each office contains a data center. Each data center has a local connection to the Internet. You deploy an Exchange Server 2016 organization named Contoso and install three servers in each data center. All of the servers are members of a single database availability group (DAG). Each data center hosts 2,000 mailboxes that replicate to the other data center. You create four records in DNS. The records are configured as shown in the following table.

Record Name	Type	Points to	Zone
Lamail.contoso.com	A	Los Angeles data center	Public
Sfmail.contoso.com	A	San Francisco data center	Public
Mail.contoso.com	CNAME	Lamail.contoso.com Sfmail.contoso.com	Public
Mail.contoso.com	A	Los Angeles data center	Internal

You need to recommend a client access solution for the organization to meet the following requirements: When connecting from the Internet, all users must connect to the same namespace for Outlook on the Web. If a connection to the Internet fails at one data center, all users must be able to access their mailbox from the Internet. When connecting from the Internet, all user connections to Exchange ActiveSync must be balanced equally across both data centers. What is the best recommendation to achieve the goal? More than one answer choice may achieve the goal. Select the BEST answer.

- A. in the San Francisco office, configure the internal URLs of the servers to use the internal URLofsfmail.contoso.com. In the Los Angeles office, configure
- B. in the San Francisco office, configure the external URLs of the servers to use the internal URLofsfmail.contoso.com. In the Los Angeles office, configure
- C. Deploy a hardware-based load balancer to each office and configure all of the internal URLs to use mail.contoso.com
- D. Deploy a hardware-based load balancer to each office and configure all of the external URLs to use mail.contoso.com

Answer: D

QUESTION 43

Your network contains a single Active Directory forest. The forest contains two sites named Site1 and Site2. You have an Exchange Server 2016 organization. The organization contains two servers in each site. You have a database availability group (DAG) that spans both sites. The file share witness is in Site1. If a power failure occurs at Site1, you plan to mount the databases in Site2. When the power is restored in Site1, you need to prevent the databases from mounting in Site1. What should you do?

- A. Disable AutoReseed for the DAG.
- B. Implement an alternate file share witness.
- C. Configure Datacenter Activation Coordination (DAC) mode.
- D. Force a rediscovery of the network when the power is restored.

Answer: C

Explanation:

[https://technet.microsoft.com/en-us/library/dd979790\(v=exchg.150\).aspx](https://technet.microsoft.com/en-us/library/dd979790(v=exchg.150).aspx)

QUESTION 44

You have an Exchange Server 2016 organization. The organization contains three Mailbox servers. The servers are configured as shown in the following table.

Server Name	Active Directory site
EX01	Site1
EX02	Site2
EX03	Site3

You have distribution group named Group1. Group1 contains three members. The members are configured as shown in the following table.

User Name	Mailbox server
User1	EX01
User2	EX02
User3	EX03

You discover that when User1 sends email messages to Group1, all of the messages are delivered to EX02 first. You need to identify why the email messages sent to Group1 are sent to EX02 instead. What should you identify?

- A. EX02 is configured as an expansion server.
- B. The arbitration mailbox is hosted on EX02.
- C. Site2 has universal group membership caching enabled.
- D. Site2 is configured as a hub site.

Answer: A

Explanation:

[https://technet.microsoft.com/en-us/library/aa998825\(v=exchg.150\).aspx](https://technet.microsoft.com/en-us/library/aa998825(v=exchg.150).aspx)

QUESTION 45

Your network contains an Active Directory forest that has the site topology shown in the diagram.



You have an Exchange Server 2016 organization. The organization contains three servers. The servers are configured as shown in the following table.

Server Name	Active Directory site
EX01	Site1
EX02	Site2
EX03	Site3

You have the users described as shown in the following table.

User Name	Mailbox server
User1	EX01
User2	EX02
User3	EX03

You need to ensure that any email messages sent from User1 to User3 are sent to EX02 first, and then delivered to EX03. What should you configure?

- A. Site 2 as a hub site
- B. EX02 as an expansion server
- C. the Exchange cost for the site link from Site 2 to Site 3
- D. the Exchange cost for the site link from Site 1 to Site 2

Answer: A

Explanation:

[https://technet.microsoft.com/en-us/library/aa998825\(v=exchg.150\).aspx](https://technet.microsoft.com/en-us/library/aa998825(v=exchg.150).aspx)

QUESTION 46

Your company has an Exchange Server 2016 organization and a Microsoft Office 365 subscription configured in a hybrid deployment. You configure the synchronization of on-premises Active Directory accounts to Office 365. All users connect to email services by using Outlook 2016. You plan to deploy Office 365 Message Encryption for the mailboxes of two executives named Exec1 and Exec2. The mailboxes are hosted in Office 365. You need to recommend which actions must be performed to ensure that all of the email messages sent from Exec1 and Exec2 to any recipient on the Internet are encrypted. Which two actions should you recommend? Each correct answer presents part of the solution.

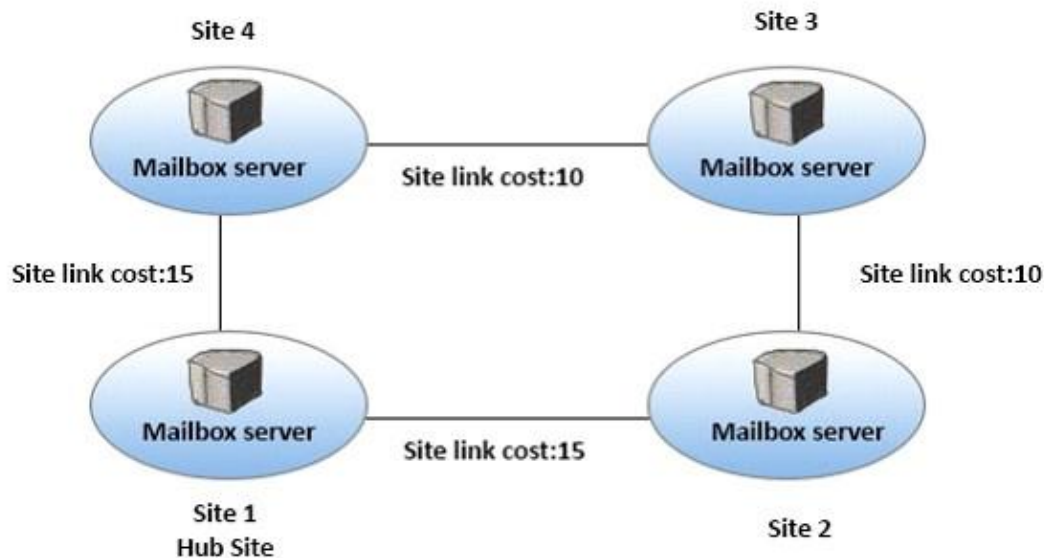
- A. Deploy Microsoft Azure Rights Management (Azure RMS) to the Office 365 subscription.
- B. Deploy Active Directory Rights Management Services (AD RMS) to the network.
- C. Run the Set-MsolUserLicense cmdlet.
- D. From the Office 365 Exchange admin center, create a rule.
- E. Install a certificate on the computer of Exec1 and the computer of Exec2.
- F. From the on-premises Exchange admin center, create a transport rule.

Answer: AF

QUESTION 47

Hotspot Question

You have an Exchange Server 2016 organization. The Active directory sites are configured as shown in the following graphic.



Use the drop-down menus to select the answer choice that completes each statement based on the information presented in the graphic.

When a user from Site 4 sends an email message to user in Site 2, the message will be [answer choice].

▼

sent directly to Site 2
 relayed through Site 1
 relayed through Site 3

If the server in Site 2 fails, all of the email messages sent from Site 4 to Site 2 will be queued on a server in [answer choice].

▼

Site 1
 Site 3
 Site 4

Answer:

When a user from Site 4 sends an email message to user in Site 2, the message will be [answer choice].

▼

sent directly to Site 2
 relayed through Site 1
 relayed through Site 3

If the server in Site 2 fails, all of the email messages sent from Site 4 to Site 2 will be queued on a server in [answer choice].

▼

Site 1
 Site 3
 Site 4

QUESTION 48

You have three Hyper-V hosts that each have 20 processor cores and 64 GB of RAM. Nine virtual machines are deployed to the hosts as shown in the following table.

Virtual machine name	Hyper-V host name	Number of processor cores	Amount of memory (GB)
DC1	Host1	4	8
FileServer1	Host1	4	8
WAP1	Host1	4	4
DC2	Host2	4	8
SQL1	Host2	12	32
ADFS1	Host2	4	8
Skype1	Host3	12	16
SharePoint1	Host3	12	16
SCOM1	Host3	8	12

You plan to deploy a two-node Exchange Server 2016 database availability group (DAG) by using the virtual machines. Each node will have 12 processor cores and 24 GB of memory. You are evaluating whether you can use the existing servers for the deployment or whether you must purchase additional servers. You need to recommend where to place the Exchange servers. The solution must minimize costs. What is the best recommendation to achieve the goal? More than one answer choice may achieve the goal. Select the BEST answer.

- A. One Exchange server on Host1 and one Exchange server on a new Hyper-V host.
- B. One Exchange server on Host1 and one Exchange server on Host3.
- C. Both Exchange servers on Host1.
- D. One Exchange server on Host1 and one Exchange server on Host2.
- E. One Exchange server on Host2 and one Exchange server on Host3.

Answer: E

QUESTION 49

You have an Exchange Server 2016 organization. Users report that they receive an Autodiscover error when they attempt to configure a Microsoft Outlook profile. You need to view the URLs that are returned to the users when they attempt to establish an Autodiscover connection. Which command should you run from an Exchange server?

- A. Test-OutlookConnectivity
- B. Test-OutlookWebServices
- C. Test-WebServicesConnectivity
- D. Test-MAPIConnectivity

Answer: B

Explanation:

Use the Test-OutlookWebServices cmdlet to verify the Autodiscover service settings for Microsoft Outlook on a computer running Microsoft Exchange Server that has the Client Access server role installed.

QUESTION 50

Hotspot Question

Your company has an Exchange Server 2016 organization. You plan to allow several users to access the mailboxes of the other group. You need to ensure that a user named User1 can read and delete the email messages in the mailbox of a user named User2. User1 must add the mailbox of User2 manually to the Microsoft Outlook profile. What command should you run? To answer, select the appropriate options in the answer area.

Add-MailboxFolderPermission Add-MailboxPermission	-Identify User1 -Identify User2	-User User1 -User User2
-AccessRight ExternalAccount -AccessRight FullAccess -AccessRight ReadPermission	-Atomapping \$false -Atomapping \$true -Confirm \$false -Confirm \$true	-inheritanceType All

Answer:

Add-MailboxFolderPermission Add-MailboxPermission	-Identify User1 -Identify User2	-User User1 -User User2
-AccessRight ExternalAccount -AccessRight FullAccess -AccessRight ReadPermission	-Atomapping \$false -Atomapping \$true -Confirm \$false -Confirm \$true	-inheritanceType All

QUESTION 51

You have an Exchange Server 2016 organization. The organization contains 10 mailbox databases. You have a mailbox database named DB4 on a disk that has only 10 percent free disk space. You

need to prevent automatic mailbox distribution from selecting DB4 as a target. Which cmdlet should you use?

- A. Set-MailBoxDatabase
- B. Set-MailboxServer
- C. Set-SiteMailboxProvisioningPolicy
- D. Set-DatabaseAvailabilityGroup

Answer: A

Explanation:

[https://technet.microsoft.com/en-gb/library/ff477621\(v=exchg.150\).aspx#Exclude](https://technet.microsoft.com/en-gb/library/ff477621(v=exchg.150).aspx#Exclude)

QUESTION 52

Hotspot Question

You have an Exchange Server 2016 organization. All users use Microsoft Outlook 2016. You need to configure the Exchange Server organization to meet following requirements:

- Users must be prevented from receiving a notification when they attempt to send an email message to distribution groups that contain less than 100 members.
- Users must be notified before they send email messages to an unmonitored mailbox named Service1.

Which cmdlet should you run to meet each requirement? To answer, drag appropriate cmdlets to the correct requirements. Each cmdlet must be used once, more than once, or not at all. You may need to drag the split bar between panes or scroll to view content.

Users must be prevented from receiving a notification when they attempt to send an email message to distribution groups that contain less than 100 members:

▼

Set-DistributionGroup
Set-OrganizationConfig
Set-PolicyTipConfig
Set-TransportConfig

Users must be notified before they send email messages to an unmonitored mailbox named Service1:

▼

Set-Mailbox
Set-OrganizationConfig
Set-PolicyTipConfig
Set-TransportConfig

Answer:

Users must be prevented from receiving a notification when they attempt to send an email message to distribution groups that contain less than 100 members:

▼

Set-DistributionGroup
Set-OrganizationConfig
Set-PolicyTipConfig
Set-TransportConfig

Users must be notified before they send email messages to an unmonitored mailbox named Service1:

▼

Set-Mailbox
Set-OrganizationConfig
Set-PolicyTipConfig
Set-TransportConfig

QUESTION 53

Hotspot Question

You run the Get-DlpPolicy cmdlet and you receive the following output.

```

RunspaceID           : 07479925-f4bf-4bb2-80e0-4d1eab557dfe
Name                  : Policy1
Version               : 15.0.3.0
ContentVersion        : 4
ImmutableID           : 4bf920ba-536b-4370-8dc2-4f71157702f1
State                 : Enabled
Mode                  : AuditAndNotify
Description            :
PublisherName         : Microsoft
Keywords              : {}
Identity              : Policy1
DistinguishedName     : CN=CPolicy1,CN=Rules,CN=Transport
                        SettingsCN=Contoso,CN=Microsoft
                        Exchange,CN=Services,CN=Configuration,
                        DC=contoso,DC=com
Guid                  : a0a95206-02a3-4f24-a913-a74dbbc8db01
OrganizationID        :
IsValid               : True
WhenChanged           : 9/15/2015 12:13:25 AM
ExchangeVersion       : 0.20 (15.0.0.0)
MaximumSupportedExchangeObjectVersion : 0.20 (15.0.0.0)
IsReadOnly            : False
ObjectState           : Unchanged
  
```

Use the drop-down menus to select the answer choice that completes each statement based on the information presented in the output.

If a message matches the conditions of the policy, the message will be
[answer choice].

▼

blocked and the sender will be notified
blocked without notifying the sender
send to the recipient

If a message matches the conditions of the policy, a [answer choice]
will appear in Microsoft Outlook.

▼

mail tip
non-delivery report (NDR)
policy tip

Answer:

If a message matches the conditions of the policy, the message will be
[answer choice].

▼

blocked and the sender will be notified
blocked without notifying the sender
send to the recipient

If a message matches the conditions of the policy, a [answer choice]
will appear in Microsoft Outlook.

▼

mail tip
non-delivery report (NDR)
policy tip

QUESTION 54

You have an Exchange Server 2016 organization. The organization contains accepted domains for contoso.com and litwareinc.com. The antimalware engine is enabled on Mailbox servers and uses the default policy. You do not create any custom malware rules. You need to notify internal senders when a malware attachment is detected. The rule must apply only when the recipient domain is contoso.com. Which two cmdlets should you use? Each correct answer presents part of the solution.

- A. Set-MalwareFilterPolicy
- B. New-MalwareFilterRule
- C. New-MalwareFilterPolicy
- D. Set-MalwareFilterRule

Answer: BC

Explanation:

[https://technet.microsoft.com/en-us/library/dn306062\(v=exchg.160\).aspx?f=255&MSPPErro=-2147217396](https://technet.microsoft.com/en-us/library/dn306062(v=exchg.160).aspx?f=255&MSPPErro=-2147217396)

[https://technet.microsoft.com/en-us/library/p15680\(v=exchg.160\).aspx?f=255&MSPPErro=-2147217396](https://technet.microsoft.com/en-us/library/p15680(v=exchg.160).aspx?f=255&MSPPErro=-2147217396)

QUESTION 55

You have an Exchange Server organization. The organization contains servers that have Exchange Server 2010 and Exchange Server 2016 installed. You establish a hybrid deployment between Exchange Server and Microsoft Office 365. Some users have on-premises mailboxes and personal archives in Exchange Online. You discover that you are unable to use In-Place eDiscovery to search user mailboxes and Exchange Online Archiving archives concurrently. You need to recommend a solution to ensure that In-Place eDiscovery can search the mailboxes and the personal archives concurrently. What should you include in the recommendation?

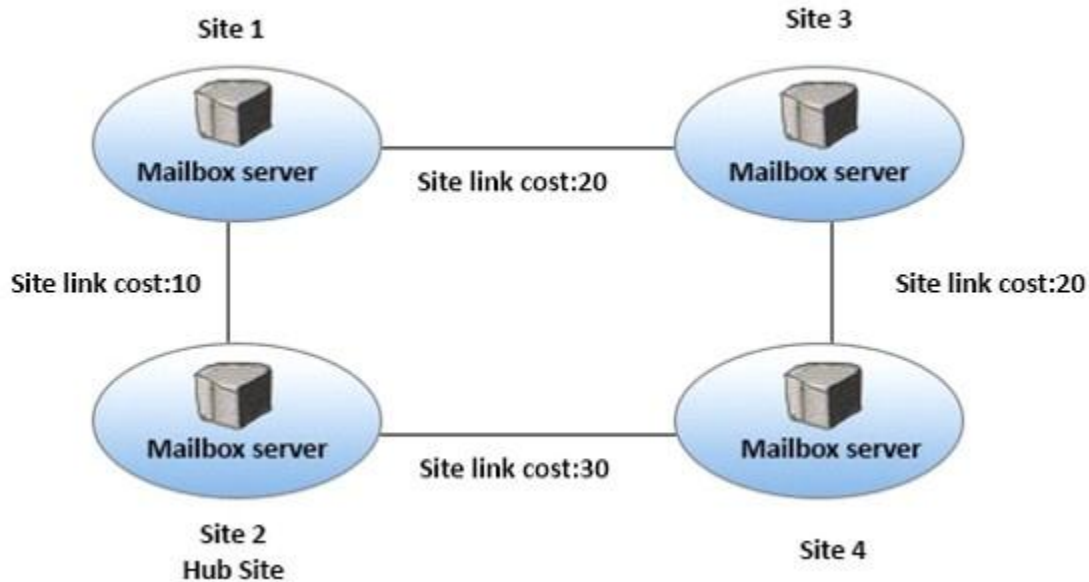
- A. Auth authentication
- B. an organization relationship
- C. a retention policy
- D. the Mailbox Replication service (MRS)

Answer: A

QUESTION 56

Hotspot Question

You have an Exchange Server 2016 organization. The Active directory sites are configured as shown in the following graphic.



Use the drop-down menus to select the answer choice that completes each statement based on the information presented in the graphic.

A message that leaves Site 1 to a destination mailbox in Site 4 will be received next at [answer choice].

▼

Site 2

Site 3

Site 4

A message that leaves Site 3 to a destination mailbox in Site 2 will be received next at [answer choice].

▼

Site 1

Site 2

Site 4

Answer:

A message that leaves Site 1 to a destination mailbox in Site 4 will be received next at [answer choice].

▼

Site 2

Site 3

Site 4

A message that leaves Site 3 to a destination mailbox in Site 2 will be received next at [answer choice].

▼

Site 1

Site 2

Site 4

QUESTION 57

Your company has three offices. The offices are located in New York, London and Sydney. The offices connect to each other by using a WAN link. Each office connects directly to the Internet. The company has an Exchange Server organization. The organization contains six mailbox servers. The servers are configured as shown in the following table.

Server name	Office	Active Directory site	Database Availability group
EX1	New York	Site1	DAG1
EX2	New York	Site1	DAG1
EX3	London	Site2	DAG1
EX4	London	Site2	DAG1
EX5	Sydney	Site3	DAG1
EX6	Sydney	Site3	DAG1

Each office is configured to use a different Send connector to send email messages to the Internet. You need to ensure that the servers route email messages that have Internet recipients through their respective site only. What should you modify?

- A. the permissions of each Send connector
- B. the settings of the site links
- C. the cost of each Send connector
- D. the scope of each Send connector

Answer: D

Explanation:

[https://msdn.microsoft.com/en-us/library/aa998662\(v=exchg.160\).aspx?f=255&MSPPErr=-2147217396](https://msdn.microsoft.com/en-us/library/aa998662(v=exchg.160).aspx?f=255&MSPPErr=-2147217396)

QUESTION 58

Hotspot Question

You are designing an Exchange Server 2016 organization. The organization will use a single namespace of mail.contoso.com for all client access protocols. You plan to use load balancers. You identify the following requirements for the load balancing solution:

- The Edge Transport server log files must contain the original IP address of the SMTP hosts.
- Clients must be able to connect only when they use the approved hostnames and the approved virtual directories.

You need to identify which type of load balancer meets each requirement. What should you identify? To answer, select the appropriate options in the answer area.

The Edge Transport server log files must contain the original IP address of the SMTP client:

Layer 4 only

Layer 7 only

Both Layer 4 and Layer 7

Users must be able to connect only when they use the approved hostnames and the approved virtual directories:

Layer 4 only

Layer 7 only

Both Layer 4 and Layer 7

Answer:

The Edge Transport server log files must contain the original IP address of the SMTP client:

Layer 4 only
Layer 7 only
Both Layer 4 and Layer 7

Users must be able to connect only when they use the approved hostnames and the approved virtual directories:

Layer 4 only
Layer 7 only
Both Layer 4 and Layer 7

QUESTION 59

Hotspot Question

You deploy an Exchange Server 2016 organization. The organization contains two servers. The servers are configured as shown in the following table.

Server name	Role
Ex01.contoso.local	Mailbox server
Ex02.contoso.local	Mailbox server

The default self-signed certificates are installed on both servers. All of the users in the organization work from home and from customer locations. You purchase a Layer 7 hardware-based load balancer. You configure SSL bridging without session affinity for Outlook on the web connections. The load balancer has an internal fully qualified domain name (FQDN) of lb1.contoso.local. DNS servers are configured to resolve mail.contoso.com names to the external IP address of the load balancer. You need to recommend which names must be included in the certificates installed on the load balancers and the Exchange servers. What should you recommend for each certificate? To answer, select the appropriate options in the answer area.

Load balancer:

	▼
Lb1.contoso.com	
Lb1.contoso.local	
Mail.contoso.com	

Ex01.contoso.local:

	▼
Ex01.contoso.com	
Ex01.contoso.local	
Mail.contoso.com	

Ex02.contoso.local:

	▼
Ex02.contoso.com	
Ex02.contoso.local	
Mail.contoso.com	

Answer:

Load balancer:

	▼
Lb1.contoso.com	
Lb1.contoso.local	
Mail.contoso.com	

Ex01.contoso.local:

	▼
Ex01.contoso.com	
Ex01.contoso.local	
Mail.contoso.com	

Ex02.contoso.local:

	▼
Ex02.contoso.com	
Ex02.contoso.local	
Mail.contoso.com	

QUESTION 60

Drag and Drop Question

You have an Exchange Server 2016 organization. The organization contains five servers. The servers are configured as shown in the following table.

Server name	Role	Active Directory site
EX01	Mailbox server	New York
EX02	Mailbox server	New York
EX03	Mailbox server	London
EX04	Mailbox server	London
SRV01	File share witness	New York
SRV02	Alternate file share witness	London

EX01, EX02, EX03, and EX04 are members of a database availability group (DAG) named DAG01. The data center in New York fails. You need to activate DAG01 in the London site. Which three commands should you run in sequence? To answer, move the appropriate commands from the list of commands to the answer area and arrange them in the correct order.

Commands

Start-DatabaseAvailabilityGroup -Identity DAG01 -ActiveDirectorySite "New York"

Restore-DatabaseAvailabilityGroup -Identity DAG01 -ActiveDirectorySite "New York"

Set-Service -Name clussvc -ComputerName EX03 -Status Stopped
Set-Service -Name clussvc -ComputerName EX04 -Status Stopped

Stop-DatabaseAvailabilityGroup -identity DAG01 -ActiveDirectorySite "New York" -ConfigurationOnly \$TRUE

Stop-DatabaseAvailabilityGroup -identity DAG01 -ActiveDirectorySite "New York" -ConfigurationOnly \$FALSE

Restore-DatabaseAvailabilityGroup -Identity DAG01 -ActiveDirectorySite "London" -AlternateWitnessServer SRV02 -AlternateWitnessDirectory D:\DAG1

Start-DatabaseAvailabilityGroup -Identity DAG01 -ActiveDirectorySite "London"

Set-Service -Name clussvc -ComputerName EX01 -Status Stopped
Set-Service -Name clussvc -ComputerName EX02 -Status Stopped

Answer Area

>
<

Answer:

Commands	Answer Area
Start-DatabaseAvailabilityGroup -Identity DAG01 -ActiveDirectorySite "New York"	Stop-DatabaseAvailabilityGroup -identity DAG01 -ActiveDirectorySite "New York"
Restore-DatabaseAvailabilityGroup -Identity DAG01 -ActiveDirectorySite "New York"	-ConfigurationOnly \$TRUE
Set-Service -Name clussvc -ComputerName EX03 -Status Stopped	Set-Service -Name clussvc -ComputerName EX01 -Status Stopped
Set-Service -Name clussvc -ComputerName EX04 -Status Stopped	Set-Service -Name clussvc -ComputerName
Stop-DatabaseAvailabilityGroup -identity DAG01 -ActiveDirectorySite "New York"	Restore-DatabaseAvailabilityGroup -Ident DAG01 -ActiveDirectorySite "London"
-ConfigurationOnly \$TRUE	-AlternateWitnessServer SRV02
Stop-DatabaseAvailabilityGroup -identity DAG01 -ActiveDirectorySite "New York"	-AlternateWitnessDirectory D:\DAG1
-ConfigurationOnly \$FALSE	
Restore-DatabaseAvailabilityGroup -Identity DAG01 -ActiveDirectorySite "London"	
-AlternateWitnessServer SRV02	
-AlternateWitnessDirectory D:\DAG1	
Start-DatabaseAvailabilityGroup -Identity DAG01 -ActiveDirectorySite "London"	
Set-Service -Name clussvc -ComputerName EX01 -Status Stopped	
Set-Service -Name clussvc -ComputerName EX02 -Status Stopped	

QUESTION 61

Drag and Drop Question

You have an Exchange Server 2016 organization. The organization contains two Mailbox servers. You have a database that is replicated to both servers. The database contains 500 mailboxes. You add new volumes to the Mailbox servers. You need to move all of the mailbox data to the new volumes. The solution must meet the following requirements:

- Ensure that multiple copies of the mailbox data are available at all times.
- Minimize downtime for the mailbox users.

Which three actions should you perform in sequence? To answer, move the appropriate actions from the list of actions to the answer area and arrange them in the correct order.

Actions

Remove all of the replicated database copies.

Create a new database.

Dismount the replicas of the database.

Move the database.

Mount the new database.

Mount the replicas of the database

Create replicated database copies.

Answer Area

Answer:

Actions

Remove all of the replicated database copies.

Create a new database.

Dismount the replicas of the database.

Move the database.

Mount the new database.

Mount the replicas of the database

Create replicated database copies.

Answer Area

Remove all of the replicated database copies.

Move the database.

Create replicated database copies.

QUESTION 62

Hotspot Question

You have an Exchange Server 2010 organization. You plan to upgrade to Exchange Server 2016. You have two active directory sites configured as shown in the following table.

Site Name	Internet-facing
Brussels	No
New York	Yes

You have five servers configured as shown in the following table.

Server name	Exchange Server version	Role	Active Directory site
EX01	2010	Mailbox server	Brussels
CAS01	2010	Client Access server, Hub Transport server	Brussels
EX02	2010	Mailbox server	Brussels
CAS02	2010	Client Access server, Hub Transport server	New York
EX03	2016	Mailbox server	New York

You have three users who have mailboxes configured as shown in the following table.

User Name	Mailbox server location
User1	EX01
User2	EX02
User3	EX03

You have the following configurations:

The OWA virtual directory ExternalURL on CAS01 is https://mail.brussels.contoso.com/owa.

The OWA virtual directory ExternalURL on CAS02 is \$null.

The OWA virtual directory ExternalURL on EX03 is https://mail.contoso.com/owa.

All users connect to https://mail.contoso.com/owa to access Outlook on the web.

For each of the following statements, select Yes, if the statement is true. Otherwise, select No.

Statements	Yes	No
User1 will be redirected to CAS01 when accessing Outlook on the web from the Internet.	<input type="radio"/>	<input type="radio"/>
User2 will be redirected to CAS02 when accessing Outlook on the web from the Internet.	<input type="radio"/>	<input type="radio"/>
User3 will be proxied to CAS02 when accessing Outlook on the web from the Internet.	<input type="radio"/>	<input type="radio"/>

Answer:

Statements	Yes	No
User1 will be redirected to CAS01 when accessing Outlook on the web from the Internet.	<input checked="" type="radio"/>	<input type="radio"/>
User2 will be redirected to CAS02 when accessing Outlook on the web from the Internet.	<input type="radio"/>	<input checked="" type="radio"/>
User3 will be proxied to CAS02 when accessing Outlook on the web from the Internet.	<input checked="" type="radio"/>	<input type="radio"/>

QUESTION 63

Drag and Drop Question

You need to configure a distribution group named CustomerService that has the following configurations:

- A user named CSManager must be the only user allowed to add members to CustomerService.
- All email messages sent to CustomerService must be approved by CSManager.
- External users must be allowed to send email messages to CustomerService.

You configure CSManager as the group owner. What should you configure in the Exchange admin center for each requirement? To answer, drag the appropriate configurations to the correct requirements. Each configuration may be used once, more than once, or not at all. You may need to drag the split bar, between panes or scroll to view content.

Configurations	Answer Area
Delivery Management	A user named CSManager must be the only user allowed to add members to CustomerService: Configuration
Membership Approval	All email messages sent to CustomerService must be approved by CSManager: Configuration
Moderation	External users must be allowed to send email messages to CustomerService: Configuration
Ownership	

Answer:

Configurations	Answer Area
Delivery Management	A user named CSManager must be the only user allowed to add members to CustomerService: Ownership
Membership Approval	All email messages sent to CustomerService must be approved by CSManager: Moderation
Moderation	External users must be allowed to send email messages to CustomerService: Delivery Management
Ownership	

QUESTION 64

You have an Exchange Server 2016 organization. The organization contains a database availability group (DAG). You need to identify the number of transaction logs that are in replay queue. Which cmdlet should you use?

- A. Test-ServiceHealth
- B. Test-ReplicationHealth

- C. Get-DatabaseAvailabilityGroup
- D. Get-MailboxDatabaseCopyStatus

Answer: D

Explanation:

[https://technet.microsoft.com/en-us/library/bb691314\(v=exchg.160\).aspx?f=255&MSPPError=-2147217396](https://technet.microsoft.com/en-us/library/bb691314(v=exchg.160).aspx?f=255&MSPPError=-2147217396)

QUESTION 65

You are planning an Exchange Server 2016 organization. The organization will contain a Mailbox server named EX01. Users will have primary SMTP email addresses in the following domains:

- Contoso.com
- Fabrikam.com
- Cohowinery.com
- Wingtiptoys.com

You need to add a DNS record to provide Autodiscover for each domain. Which type of record should you create in each zone?

- A. CERT
- B. A
- C. MINFO
- D. PTR

Answer: A

QUESTION 66

You need to configure the virtual directories for the Exchange Server organization. Which three commands should you use? Each correct answer presents part of the solution.

- A. Set-MapiVirtualDirectory-ExternalUrl "https://office-online.contoso.com/hosting/discovery"
- B. Set-ActiveSyncVirtualDirectory-ExternalUrl "https://mail.contoso.com/Microsoft-Server-ActiveSync"
- C. Set-WebServicesVirtualDirectory-ExternalUrl "https://mail.contoso.com/ews/exchange.asmx"
- D. Set-AutodiscoverVirtualDirectory-ExternalUrl "https://autodiscover.contoso.com/autodiscover/autodiscover.xmr"
- E. Set-OwaVirtualDirectory-ExternalUrl "https://mail.contoso.com/owa"

Answer: BCD

QUESTION 67

Hotspot Question

You have an Exchange Server 2016 organization and a Microsoft Office 365 subscription configured in a hybrid deployment. The deployment contains 500 user mailboxes. Users who have mailboxes in Office 365 report that they cannot view the availability information of users who have mailboxes in Exchange Server 2016. You need to ensure that the users hosted in Office 365 can view the availability information of the mailboxes hosted in on-premises Exchange Server. Which command should you run on an Exchange Server? To answer, select the appropriate options in the answer area.

Add-AvailabilityAddressSpace Set-AvailabilityConfig Set-OutlookAnywhere Set-WebservicesVirtualDirectory	-identify EX1/EWS(Default Website) -identify EX1/OWA(Default Website) -IISAuthentication NTLM
------------------------------------------------------------------------------------------------------------------	-----------------------------------------------------------------------------------------------------

-ExternalURL -InternalURL	https://mail.contoso.com/ews/Exchange.asmx
------------------------------	--------------------------------------------

Answer:

Add-AvailabilityAddressSpace Set-AvailabilityConfig Set-OutlookAnywhere Set-WebservicesVirtualDirectory	-identify EX1/EWS(Default Website) -identify EX1/OWA(Default Website) -IISAuthentication NTLM
------------------------------------------------------------------------------------------------------------------	-----------------------------------------------------------------------------------------------------

-ExternalURL -InternalURL	https://mail.contoso.com/ews/Exchange.asmx
------------------------------	--------------------------------------------

QUESTION 68

Hotspot Question

Your company has an Exchange Server 2016 organization. The organization contains two Mailbox servers and one Edge Transport server. You need to modify the anti-spam strategy of the organization to resolve the following issues: Users in the marketing department report that most email messages identified as spam are legitimate. Users in the human resources department report that they receive hundreds of email messages daily, which contain the phrase "Tree Vacation". Which cmdlet should you use to resolve each issue? To answer, select the appropriate options in the answer area.

The marketing department users report that most email messages identified as spam are legitimate:	Set-DistributionGroup Set-Mailbox Set-OrganizationConfig Set-TransportConfig
The human resources department users report that they receive hundreds of email messages daily, which contain the phrase "Free Vacation":	Set-ContentFilterConfig Set-DistributionGroup Set-OrganizationConfig Set-TransportServer

Answer:

The marketing department users report that most email messages identified as spam are legitimate:

▼

- Set-DistributionGroup
- Set-Mailbox
- Set-OrganizationConfig
- Set-TransportConfig

The human resources department users report that they receive hundreds of email messages daily, which contain the phrase "Free Vacation":

▼

- Set-ContentFilterConfig
- Set-DistributionGroup
- Set-OrganizationConfig
- Set-TransportServer

QUESTION 69

You have an Exchange Server 2016 organization. The organization contains 2,000 mailboxes and 100 distribution groups. You create a distribution group named Managers and you add 20 users to the group. You need to ensure that the members of Managers can create new groups and modify the membership of those groups. Which three actions should you perform? Each correct answer presents part of the solution.

- A. Create a role assignment policy named Managers.
- B. Create a new role group named Managers.
- C. Assign an address book policy (ABP).
- D. Add the MyBaseOptions and MyDistributionGroupMembership management roles the Managers role assignment policy.
- E. Assign the role assignment policy.
- F. Assign a sharing policy.
- G. Add the MyBaseOptions and MyDistributionGroups management roles to the Managers role assignment policy.

Answer: AEG

QUESTION 70

Hotspot Question

You have an Exchange Server 2016 organization. The organization contains 20 resource mailboxes. You need to ensure that an administrator named Admin 1 approves all of the meeting requests sent to the mailboxes. What command should you run? To answer, select the appropriate options in the answer area.

Get-Mailbox -recipienttypedetails RoomMailbox |

▼

- New-ManagementRole
- Set-CalendarProcessing
- Set-CasMailbox
- Set-MailboxAutoReplyConfiguration
- Set-User

▼

- AssistantName
- AutomateProcessing
- Manager
- OrganizerInfo
- ResourceDelegates

Admin1

Answer:

Get-Mailbox -recipienttypedetails RoomMailbox |

		Admin1
New-ManagementRole	-AssistantName	
Set-CalendarProcessing	-AutomateProcessing	
Set-CasMailbox	-Manager	
Set-MailboxAutoReplyConfiguration	-OrganizerInfo	
Set-User	-ResourceDelegates	

QUESTION 71

Your company has an Exchange Server 2016 organization named contoso.com. You need to recommend a solution that meets following requirements:

- A user named User1 must be able to send email messages by using an alias of sales@contoso.com in the From field.
- Recipients of the messages must be prevented from identifying the actual sender of the message.
- User1 and a user named User2 must each receive a copy of replies to sales@contoso.com.

What should you recommend?

- Create a distribution group named Sales that has an alias of Sales. Add User1 and User2 to the group. Assign the Send As permissions to User1.
- Create a shared mailbox named Sales that has an Alias of Sales. Assign the Receive As permission User1 and User2. Assign the Send As permission to User 1
- Create a shared mailbox named Sales that has an Alias of Sales. Assign the Receive As permission User1 and User2. Assign the Send on permission to User 1.
- Create a distribution group named Sales that has an alias of Sales. Add User1 and User2 to the group. Assign the send on Behalf permission to User1.

Answer: A

QUESTION 72

You have an Exchange Server 2016 organization. You plan to migrate some of the users to Exchange Online. You run the Microsoft Office 365 Hybrid Configuration Wizard and you discover that the Get-FederationInformation cmdlet fails to retrieve the required information. You need to identify which DNS record must be configured to resolve the failure. What should you identify?

- an MX record for SMTP domain
- an A record for a Mailbox server
- a PTR record for the Mailbox server
- an A record for Autodiscover

Answer: D

QUESTION 73

Hotspot Question

You are planning an Exchange Server 2016 organization. The organization will contain two servers. The servers will be configured as shown in the following table.

Server name	Active Directory site
EX01	New York
EX02	London

You plan to purchase an SSL certificate that contains the following names:

- Mail.contoso.com
- Mail.london.contoso.com
- Mail.newyork.contoso.com

You plan to configure a solution for the sites in New York and London. DNS will resolve the names as shown in the following table.

Host name	Resolves to
Mail.contoso.com	IP addresses of the servers in the New York and London sites
Mail.newyork.contoso.com	IP address of the server in the New York site
Mail.london.contoso.com	IP address of the server in the London site

You need to configure the client protocols to meet the following requirements: Users who connect to their mailbox by using Outlook on the web must connect directly to a server in the site that hosts their mailbox. All Exchange ActiveSync users must connect to the same namespace. How should you configure the virtual directories? To answer, select the appropriate options in the answer area.

EX01 OWA virtual directory ExternalUrl:

https://ex01.contoso.com/owa
https://mail.contoso.com/owa
https://mail.london.contoso.com/owa
https://mail.newyork.contoso.com/owa

EX02 OWA virtual directory ExternalUrl:

https://ex02.contoso.com/owa
https://mail.contoso.com/owa
https://mail.london.contoso.com/owa
https://mail.newyork.contoso.com/owa

EX01 ActiveSync virtual directory ExternalUrl:

https://ex01.contoso.com/Microsoft-Server-ActiveSync
https://mail.contoso.com/Microsoft-Server-ActiveSync
https://mail.london.contoso.com/Microsoft-Server-ActiveSync

EX02 ActiveSync virtual directory ExternalUrl:

https://ex02.contoso.com/Microsoft-Server-ActiveSync
https://mail.contoso.com/Microsoft-Server-ActiveSync
https://mail.london.contoso.com/Microsoft-Server-ActiveSync

Answer:

EX01 OWA virtual directory ExternalUrl:	<div>▼</div> <div> https://ex01.contoso.com/owa https://mail.contoso.com/owa https://mail.london.contoso.com/owa https://mail.newyork.contoso.com/owa </div>
EX02 OWA virtual directory ExternalUrl:	<div>▼</div> <div> https://ex02.contoso.com/owa https://mail.contoso.com/owa https://mail.london.contoso.com/owa https://mail.newyork.contoso.com/owa </div>
EX01 ActiveSync virtual directory ExternalUrl:	<div>▼</div> <div> https://ex01.contoso.com/Microsoft-Server-ActiveSync https://mail.contoso.com/Microsoft-Server-ActiveSync https://mail.london.contoso.com/Microsoft-Server-ActiveSync </div>
EX02 ActiveSync virtual directory ExternalUrl:	<div>▼</div> <div> https://ex02.contoso.com/Microsoft-Server-ActiveSync https://mail.contoso.com/Microsoft-Server-ActiveSync https://mail.london.contoso.com/Microsoft-Server-ActiveSync </div>

QUESTION 74

Drag and Drop Question

You have an Exchange Server 2016 organization. You run the Microsoft Office 365 Hybrid Configuration Wizard and you move all the mailboxes to Exchange Online. You need to ensure that all of the email services remain available after you remove the Exchange Server 2016 servers from the organization. Which DNS records should you modify? To answer, drag the appropriate record types to the correct DNS zones. Each record type may be used once, more than once, or not at all. You may need to drag the split bar between panes or scroll to view content.

Record Types	Answer Area
Autodiscover	Record to modify in the internal DNS zone: <div>Record Type</div>
MX	Record to modify in the public DNS zone: <div>Record Type</div>
NX	
SRV	<div>Record Type</div>

Answer:

Record Types		Answer Area
<input type="text" value="Autodiscover"/>	Record to modify in the internal DNS zone:	<input type="text" value="Autodiscover"/>
<input type="text" value="MX"/>	Record to modify in the public DNS zone:	<input type="text" value="Autodiscover"/>
<input type="text" value="NX"/>		
<input type="text" value="SRV"/>		<input type="text" value="MX"/>

QUESTION 75

You have an Exchange Server 2016 organization that contains multiple Hub Transport servers. You need to recommend a message hygiene solution to meet the following requirements:

- Block servers that are known to send spam
- Minimize administrative effort

What should you recommend?

- A. an IP Block list
- B. IP Block list providers
- C. recipient filtering
- D. sender filtering

Answer: B

QUESTION 76

Your company has a main office and a branch office. An Active Directory site exists for each office. The offices are connected by a WAN link. You plan to deploy Exchange Server 2016 in each site. You need to identify the number of Exchange servers required to meet the following requirements:

- Maintain user access to mailboxes if a single server fails
- Use the minimum number of Exchange servers in each site

How many servers should you deploy in each site?

- A. 1
- B. 2
- C. 3
- D. 4

Answer: B

QUESTION 77

You have an Exchange Server 2016 organization. You plan to enable Federated Sharing. You need to create a DNS record to store the Application Identifier (AppID) of the domain for the federated trust. Which type of record should you create?

- A. A
- B. CNAME
- C. SRV
- D. TXT

Answer: D

QUESTION 78

You have an Exchange Server 2016 organization. You need to create a resource record in DNS to support Autodiscover from the Internet. What type of resource record should you create?

- A. Host (A)
- B. Text (TXT)
- C. Pointer (PTR)
- D. Mail exchange (MX)

Answer: A

QUESTION 79

You have an Exchange Server 2016 on-premises organization and a Microsoft Office 365 tenant. All mailboxes are hosted on-premises. You need to implement an archiving solution for all users. The solution must ensure that all mailbox content older than 18 months is moved to Personal Archives in Office 365. What should you implement?

- A. A default policy tag (DPT)
- B. A retention policy
- C. A personal tag
- D. A retention policy tag (RPT)
- E. A retention hold

Answer: B

QUESTION 80

You have an Exchange Server 2016 organization. Users connect to their mailbox by using Microsoft Outlook 2013 and mobile devices. A user named User1 loses a mobile device. You need to wipe the mobile device remotely. Which cmdlet should you use?

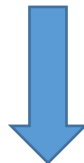
- A. Remove-MobileDevice
- B. Clear-MobileDevice
- C. Set-Mailbox
- D. Remove-ActiveSyncDevice

Answer: B

QUESTION 81

.....

Get Complete Version Exam 70-345 Dumps with VCE and PDF Here



<https://www.passleader.com/70-345.html>