

New 70-741 Exam Dumps Collection from PassLeader in VCE and PDF Files (Question 29 - Question 32)

Valid 70-741 Dumps shared by PassLeader for Helping Passing 70-741 Exam! PassLeader now offer the newest 70-741 VCE dumps and 70-741 PDF dumps, the PassLeader 70-741 exam questions have been updated and ANSWERS have been corrected, get the newest PassLeader 70-741 dumps with VCE and PDF here: <http://www.passleader.com/70-741.html> (180 Q&As Dumps --> 207 Q&As Dumps --> 231 Q&As Dumps)

BTW, DOWNLOAD part of PassLeader 70-741 dumps from Cloud Storage:

https://drive.google.com/open?id=0B-ob6L_QjGLpRU11Y0xaTTdfTjQ

QUESTION 29

You have a server named Server1 that runs Windows Server 2016. Server1 has the following routing table.

Network	Destination	Netmask	Gateway	Interface	Metric
0.0.0.0		0.0.0.0	192.168.2.1	192.168.2.92	10
10.0.0.0		255.0.0.0	On-link	10.10.0.11	261
10.10.0.11		255.255.255.25	On-link	10.10.0.11	261
10.20.200.0		255.255.255.0	10.10.0.2	10.10.0.11	5
10.255.255.255		255.255.255.255	On-link	10.10.0.11	261
127.0.0.0		255.0.0.0	On-link	127.0.0.1	306
127.0.0.1		255.255.255.255	On-link	127.0.0.1	306
127.255.255.255		255.255.255.255	On-link	127.0.0.1	306
172.16.0.0		255.240.0.0	On-link	172.16.0.1	261
172.16.0.1		255.255.255.255	On-link	172.16.0.1	261
172.31.255.255		255.255.255.255	On-link	172.16.0.1	261
192.168.2.0		255.255.255.0	On-link	192.168.2.92	266
192.168.2.92		255.255.255.255	On-link	192.168.2.92	266
192.168.2.255		255.255.255.255	On-link	192.168.2.92	266
224.0.0.0		240.0.0.0	On-link	127.0.0.1	306
224.0.0.0		240.0.0.0	On-link	172.16.0.1	261
224.0.0.0		240.0.0.0	On-link	10.10.0.11	261
224.0.0.0		240.0.0.0	On-link	192.168.2.92	266
255.255.255.255		255.255.255.255	On-link	127.0.0.1	306
255.255.255.255		255.255.255.255	On-link	172.16.0.1	261
255.255.255.255		255.255.255.255	On-link	10.10.0.11	261
255.255.255.255		255.255.255.255	On-link	192.168.2.92	266

What will occur when Server1 attempts to connect to a host that has an IP address of 172.20.10.50?

- A. Server1 will attempt to connect directly to 172.20.10.50.
- B. Server1 will route the connection to 10.10.0.2.
- C. Server1 will silently drop the connection attempt.
- D. Server1 will route the connection to 192.168.2.1.

Answer: D

Explanation:

<http://www.techrepublic.com/article/understanding-routing-tables/>

QUESTION 30

Note: This question is part of a series of questions that present the same scenario. Each question in the series contains a unique solution that might meet the stated goals. Some question sets might have more than one correct solution, while others might not have a correct solution. After you answer a question in this sections, you will NOT be able to return to it. As a result, these questions will not appear in the review screen.

Your network contains an Active Directory domain named contoso.com. The domain contains a member server named Server1 that runs Windows Server 2016 and has the DNS Server role installed. Automatic scavenging of state records is enabled and the scavenging period is set to 10 days. All client computers dynamically register their names in the contoso.com DNS zone on Server1. You discover that the names of multiple client computers that were removed from the network several weeks ago can still be resolved. You need to configure Server1 to automatically remove the records of the client computers that have been offline for more than 10 days.

Solution: You set the Time to live (TTL) value of all of the records in the zone.

Does this meet the goal?

- A. Yes
- B. No

Answer: B

Explanation:

<https://technet.microsoft.com/en-us/library/cc958972.aspx>

QUESTION 31

Note: This question is part of a series of questions that present the same scenario. Each question in the series contains a unique solution. Determine whether the solution meets the stated goals.

Your network contains an Active Directory domain named contoso.com. The domain contains a DNS server named Server1. All client computers run Windows 10. On Server1, you have the following zone configuration.

ZoneName	ZoneType	IsAutoCreated	IsDnsIntegrated	IsReverseLookupZone	IsSigned
_msdcs.contoso.com	Primary	False	True	False	False
adatum.com	Forwarder	False	False	False	False
contoso.com	Primary	False	True	False	False
fabrikam.com	Primary	False	False	False	True
TrustAnchors	Primary	False	True	False	False

You have the following subnets defined on Server1.

Name	IPV4Subnet	IPV6Subnet
Subnet1	{10.0.0.0/24}	
Subnet2	{10.0.1.0/24}	
Subnet3	{192.168.15.0/24}	
Subnet4	{172.16.1.0/24}	

You need to prevent Server1 from resolving queries from DNS clients located on Subnet4. Server1 must resolve queries from all other DNS clients.

Solution: From a Group Policy object (GPO) in the domain, you modify the Network List Manager Policies.

Does this meet the goal?

- A. Yes
- B. No

Answer: B

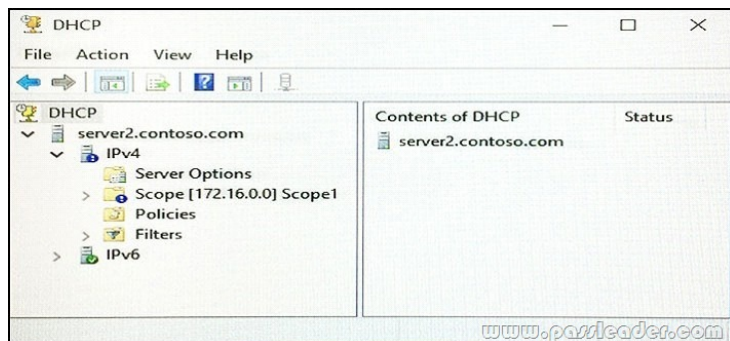
Explanation:

[https://technet.microsoft.com/en-us/library/jj966256\(v=ws.11\).aspx](https://technet.microsoft.com/en-us/library/jj966256(v=ws.11).aspx)

QUESTION 32

Note: This question is part of a series of questions that present the same scenario. Each question in the series contains a unique solution that might meet the stated goals. Some question sets might have more than one correct solution, while others might not have a correct solution. After you answer a question in this sections, you will NOT be able to return to it. As a result, these questions will not appear in the review screen.

You network contains an Active Directory domain named contoso.com. The domain contains a DHCP server named Server2 than runs Windows Server 2016. Users report that their client computers fail to obtain an IP address. You open the DHCP console as shown in the Exhibit.



Scope1 has an address range of 172.16.0.10 to 172.16.0.100 and a prefix length of 23 bits. You need to ensure that all of the client

computers on the network can obtain an IP address from Server2.

Solution: You run the Repair-DhcpServerv4IPRecord cmdlet.

Does this meet the goal?

A. Yes

B. No

Answer: B

Explanation:

<https://technet.microsoft.com/itpro/powershell/windows/dhcp-server/set-dhcpserverv4scope>

Get the newest PassLeader 70-741 VCE dumps here: <http://www.passleader.com/70-741.html> (180 Q&As Dumps --> 207 Q&As Dumps --> 231 Q&As Dumps)

And, DOWNLOAD the newest PassLeader 70-741 PDF dumps from Cloud Storage for free:

https://drive.google.com/open?id=0B-ob6L_QjGLpRU11Y0xaTTdfTjQ